

RAIL CROSSING DIVERSION ORDER

HIGHWAYS ACT 1980 SECTION 119A

BRIDGEND COUNTY BOROUGH COUNCIL
(DIVERSION OF FOOTPATH 16 COYCHURCH LOWER)
RAIL CROSSING DIVERSION ORDER NO. 1 2025

This Order is made by the Bridgend County Borough Council ("the authority") under Section 119A of the Highways Act 1980 ("the 1980 Act").

The footpath described in paragraph 1 of this order in the authority's area crosses a railway otherwise than by a tunnel or bridge.

It appears to the authority that it is expedient in the interests of the safety of members of the public using, or likely to use, the said footpath that it should be diverted onto land owned by the operator of the railway as described in the schedule.

BY THIS ORDER:

1. The public right of way over the land situated at, Torcoed Farm, Coychurch, Bridgend and shown by bold continuous lines on the map attached to this Order and described in Part 1 of the Schedule hereto shall be extinguished after 28 days from the date of confirmation of this Order.
2. There shall at the end of 28 days from the date of confirmation of this order be a public footpath over the land situate south of the South Wales Main railway line at Coychurch, Bridgend described in Part 2 of the Schedule and shown by a bold broken line on the map attached to this order.
3. The operator of the railway crossed by the footpath described in paragraph 1 shall maintain the part shown between Points A-C-D on the said map of the footpath created by this order.
4. The rights conferred on the public under this order shall be subject to the limitations and conditions set out in Part 3 of the Schedule.

The above order was confirmed as an unopposed Order by the Bridgend County Borough Council on the 9th April 2025.

Authorised Signatory: ... 
Group Manager - Legal and Democratic Services



The Common Seal of **BRIDGEND COUNTY**)
BOROUGH COUNCIL was hereunto affixed)
on the 12th day of February 2025)
in the presence of:-



AUTHORISED SIGNATORY: [REDACTED]

SCHEDULE
PART 1
DESCRIPTION OF SITE OF EXISTING PATH OR WAY

That section of Footpath 16 Coychurch Lower, commencing at Point A (Grid Reference SS 9500 8035), south of the railway line, and proceeds in a general west-northwesterly direction through a field and a farmyard for approximately 158 metres to Torcoed Farm, Point B (Grid Reference SS 9484 8040).

The total length of this section of Footpath 17 to be diverted is approximately 158 metres as shown by a bold black line on the map. The Definitive width of the footpath is 0.6 metres.

PART 2
DESCRIPTION OF SITE OF NEW PATH OR WAY

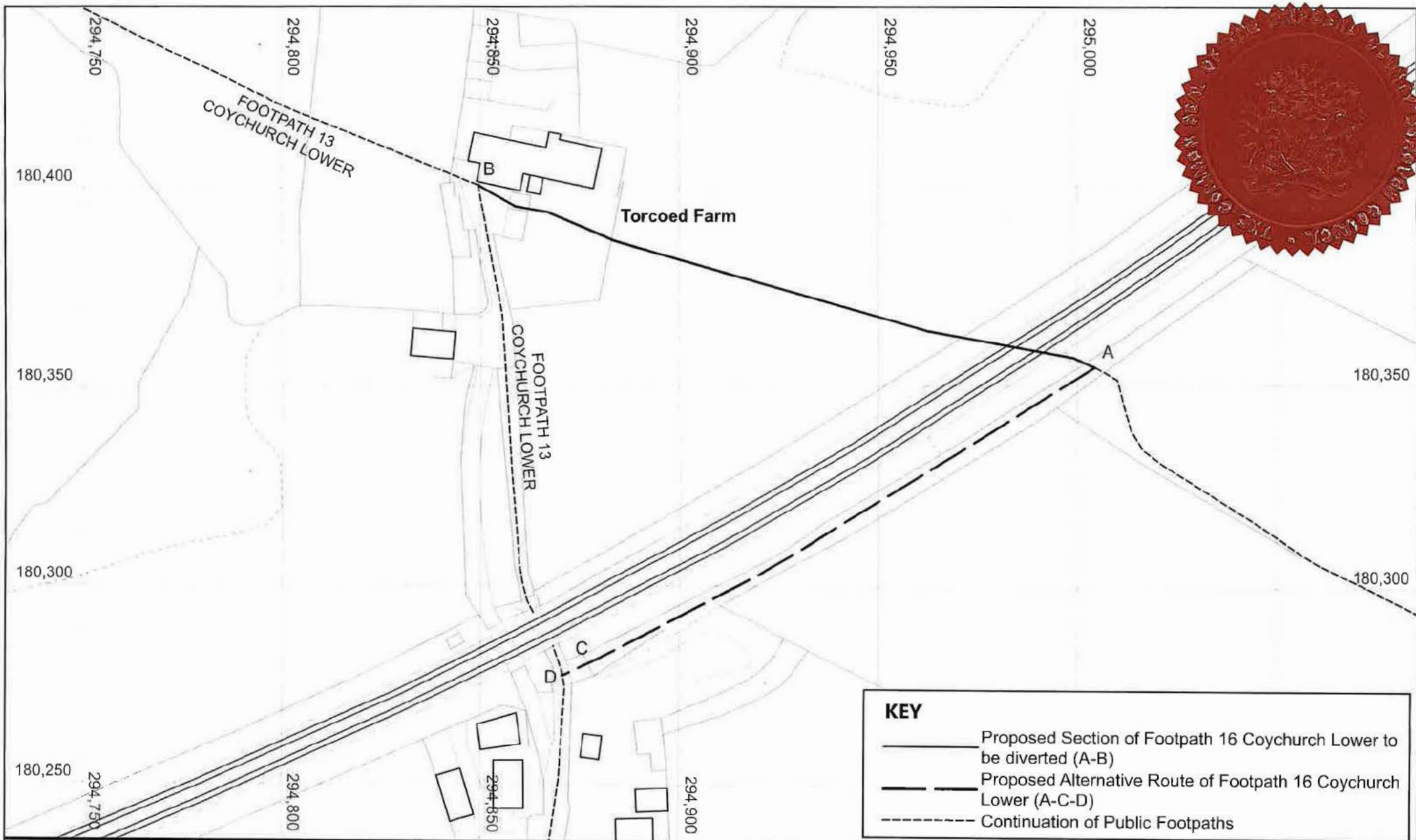
A new section of Footpath 16 Coychurch Lower commencing at Point A (Grid Reference SS 9500 8035), south of the railway line, and proceeds in a general west-southwesterly direction for approximately 147 metres along a gravel surfaced path before passing through a field gate at Point C (Grid Reference SS 9487 8028) the route then continues in a west-southwesterly direction for approximately 7 metres to terminate at its junction with FP 15 Coychurch Lower at Point D (Grid Reference SS 9487 8027).

The total length of the new section of Footpath 16 is approximately 154 metres with a width of 1.8 metres as shown by a bold broken line on the map.

A new right of way is being created over the whole site (A-C-D) which is owned by Network Rail Infrastructure Limited.

PART 3
LIMITATIONS AND CONDITIONS

The Footpath shall be subject to the limitation of a field gate (constructed to BS5709:2018) at Point C (Grid Reference SS 9487 8028).



KEY

- Proposed Section of Footpath 16 Coychurch Lower to be diverted (A-B)
- Proposed Alternative Route of Footpath 16 Coychurch Lower (A-C-D)
- Continuation of Public Footpaths

BRIDGEND COUNTY BOROUGH COUNCIL

COMMUNITIES DIRECTORATE

Corporate Director
Communities

Civic Offices
Angel Street
Bridgend CF31 4WB
Telephone (01656) 643643

RAIL CROSSING DIVERSION ORDER
HIGHWAYS ACT 1980 SECTION 119A

BRIDGEND COUNTY BOROUGH COUNCIL
(DIVERSION OF FOOTPATH 16 COYCHURCH LOWER)
RAIL CROSSING DIVERSION ORDER NO. 1 2025

Scale 1:1,250

Date: 07/02/2025

©Crown Copyright and database right 2025. Ordnance Survey AC0000851951. Use of this data is subject to terms and conditions.

©Hawlfraint a hawllau cronfa ddata'r Goron 2025. Rhif Trwydded yr Arolwg Ordnans AC0000851951. Mae defnydd o'r data hwn yn ddarostyngedig i delerau ac amodau.

HIGHWAYS ACT 1980

BRIDGEND COUNTY BOROUGH COUNCIL
(DIVERSION OF FOOTPATH 16 COYCHURCH LOWER)
RAIL CROSSING DIVERSION ORDER NO. 1 2025

K Watson,
Chief Officer Legal and Regulatory Services,
Human Resources and Corporate Policy
Chief Executive's Directorate,
Bridgend County Borough Council,
Civic Offices,
Angel Street,
Bridgend,
CF31 4WB.

Legal Ref: HIG001-1122 / TE/H/MPP/FP16CYL