

Carmarthen Bay, Gower and Swansea Bay Local Seascape Character Assessment



Carmarthen Bay, Gower and Swansea Bay Local Seascape Character Assessment

Stakeholder Consultation

The study

The study is looking at the seascape character of the coast and tidal waters between Laugharne and Porthcawl , and the sea out to the territorial limits in the Bristol Channel. The purpose is to divide the area into seascape character areas, to describe these areas, their characteristics, the change that is occurring, their sensitivities and objectives. This information will then be used to inform development planning and management for coastal and marine development in the area.

Where we are

We are part of the way through the study and have identified twenty seascape character areas with draft descriptions and characteristics, and have started to consider forces for change. We need to check whether this draft information properly reflects what is there, what contributes to the area's character and the changes it faces. We want feedback from people and organisations who know and use the area to help make this a useful planning document.

Study context

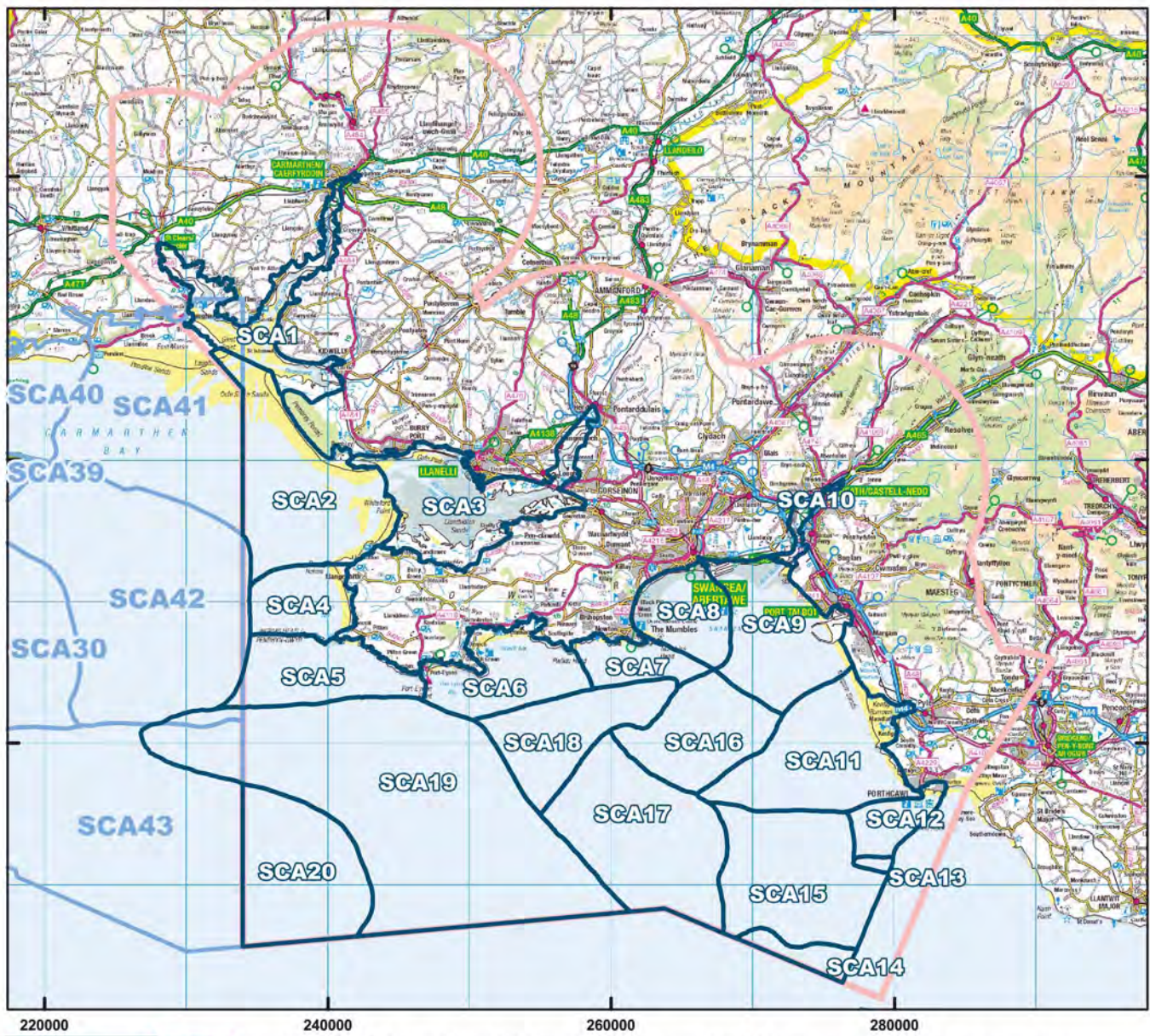
The study is undertaken within the context of a National Seascape Assessment for Wales which described our marine waters at a broad brush level to inform the Welsh National Marine Plan. It also continues the local seascape assessment of the coast and sea along from the Pembrokeshire Coast study, using similar methods and approaches.

Who is involved?

The clients for the project are the City & County of Swansea (including Gower Area of Outstanding Natural Beauty (AONB) staff), Carmarthenshire County Council, Neath Port Talbot County Borough Council, Bridgend County Borough Council and Natural Resources Wales. The steering group also includes the Gower Society, local archaeological trusts and other stakeholders. The consultants are a team led by White Consultants in Cardiff including Cardiff University Earth and Ocean Sciences.

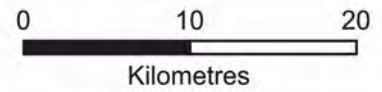
What happens to my comments?

The consultants will record all comments and, in conjunction with the project steering group, will then adjust the boundaries, names, descriptions, key characteristics and forces for change as necessary.



Key

- Gower SeascapeCharacterAreas
- Pembrokeshire SeascapeCharacterAreas
- Gower Study Area



Reproduced from Ordnance Survey digital map data © Crown copyright 2016. All rights reserved. Licence number 100019741
Sources: Ordnance Survey, Oceanwise, NRW.

www.whiteconsultants.co.uk
Tel: 029 2043 7841

Project: Carmarthen Bay, Gower and Swansea Bay Local Seascape Character Assessment
Client Group: CCC, CCS, NPTCBC, BCBC, NRW.
Date: December 2016

Figure 17 : Seascape Character Areas

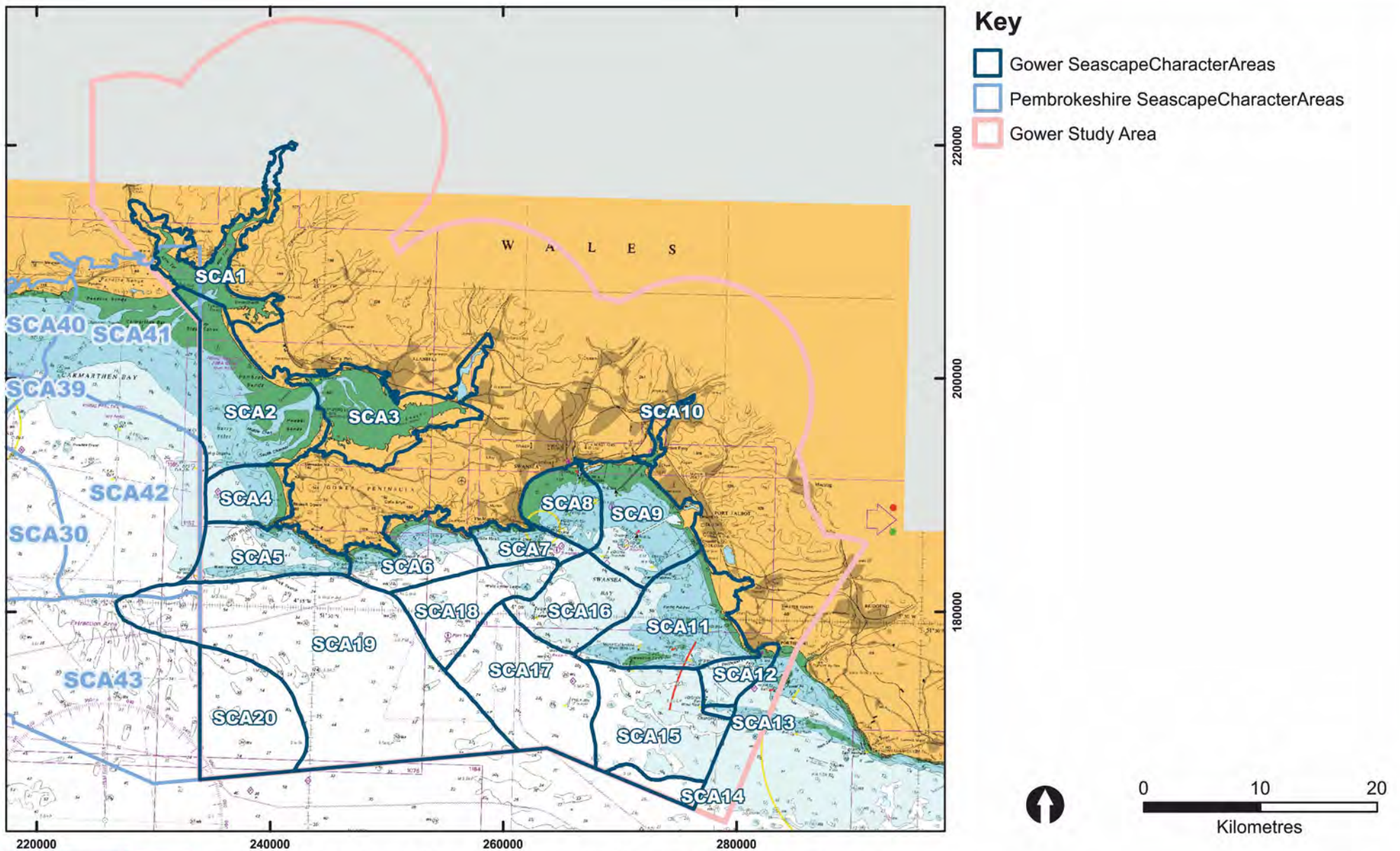


Figure 18 : Seascape Character Areas