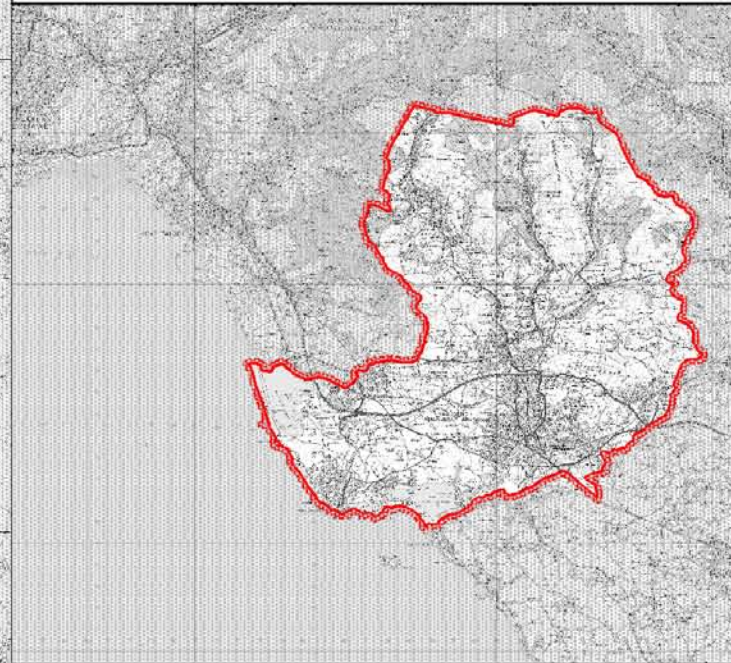


**Legend**

- Potential Sources of Artificial Flooding (reservoirs, lakes, etc)
- BCBC Boundary
- Settlements
- Porthcawl Storage Lakes



Scale at A3 1: 80,000  
Date 10/08/2010

DRAWN BY	CHECKED BY	AMENDED BY	ISSUING OFFICE
AB	CS	BW	BRISTOL

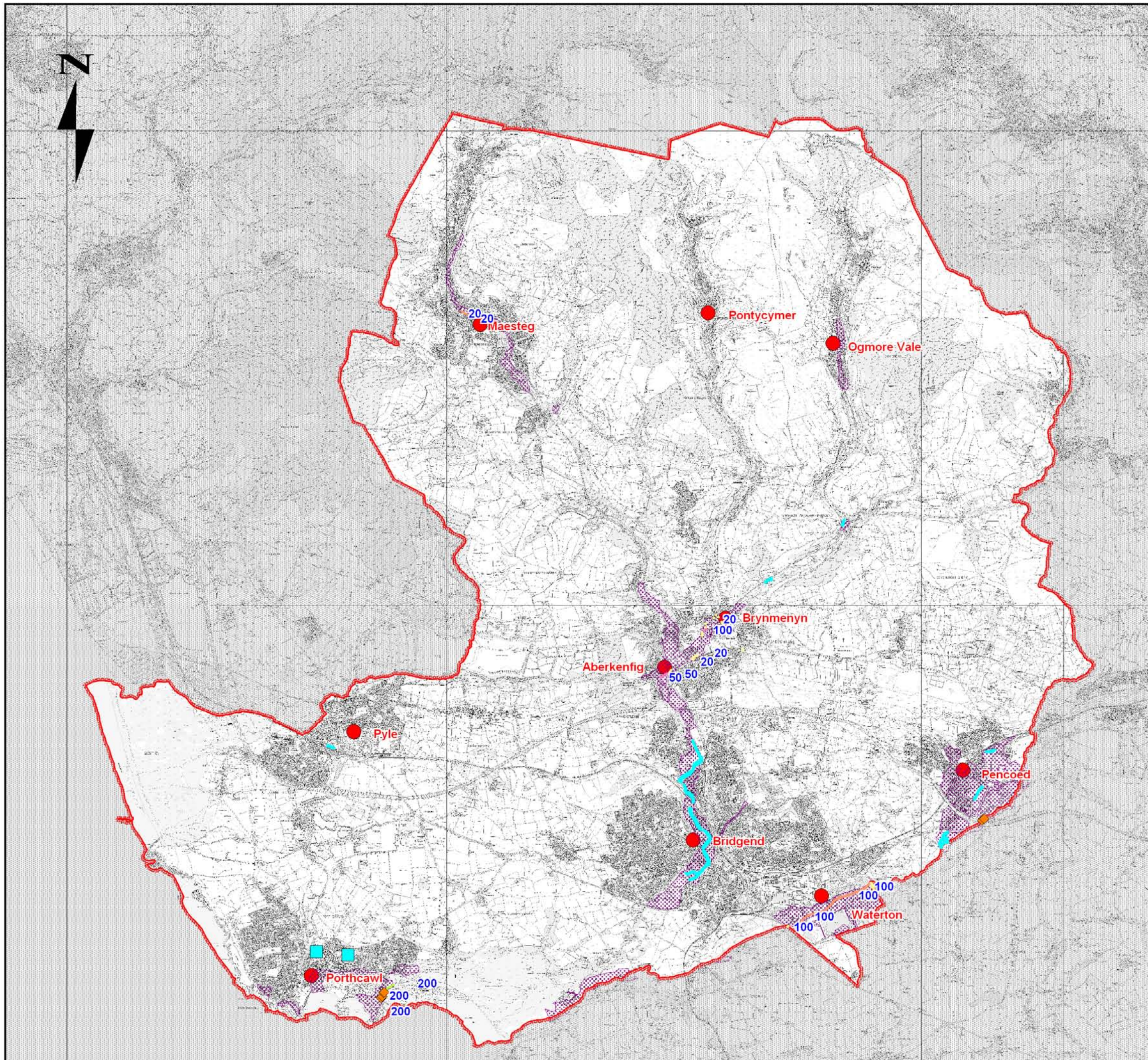
Note the property of this drawing and design is vested in Capita Symonds Limited and must not be copied or reproduced in any way without their written consent  
This map is reproduced from Ordnance Survey material with permission of Ordnance Survey on behalf of the Controller of Her Majesty's Stationary Office Crown copyright. Unauthorised reproduction infringes Crown copyright and may lead to prosecution or civil proceedings. (Bridgend County Borough Council Licence Number 100023405, 2009).

Map\_A.wor

**Bridgend County Borough Council SFCA**  
Map A - Flooding from Artificial Sources



**CAPITA SYMONDS**



**Legend**

**NFCDD Flood Defence Infrastructure**

- flood defence structure
- maintained channel
- raised defence (man-made)
- sea defence (man-made)

— Defence information from BCBC

◆ Flapped Outfalls

Flood Warning

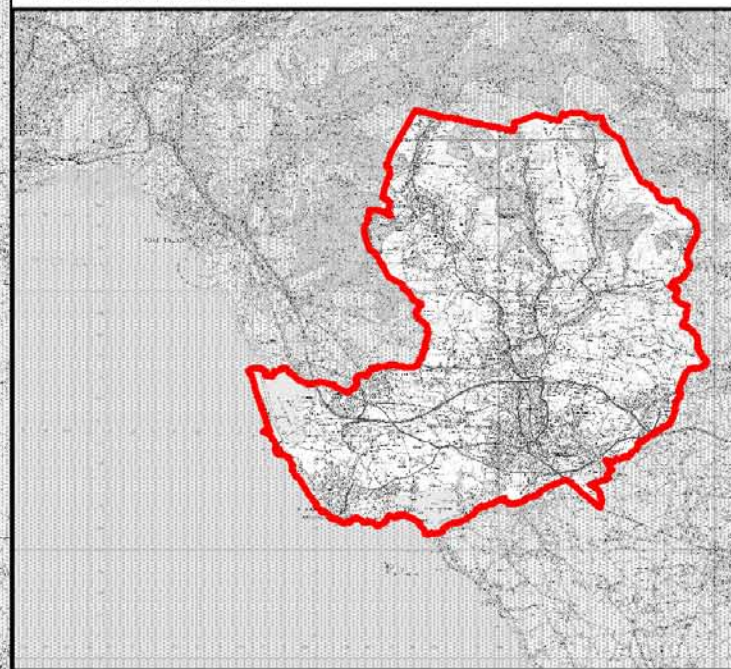
BCCB Boundary

● Settlements

■ Porthcawl Storage Lakes

**SOP shown in blue text**

Note: NFCDD defence information has only been provided for the five strategic areas. For further information contact the Environment Agency.



Scale at A3 1: 80,000

Date 10/08/2010

DRAWN BY	CHECKED BY	AMENDED BY	ISSUING OFFICE
AB	CS	BW	BRISTOL

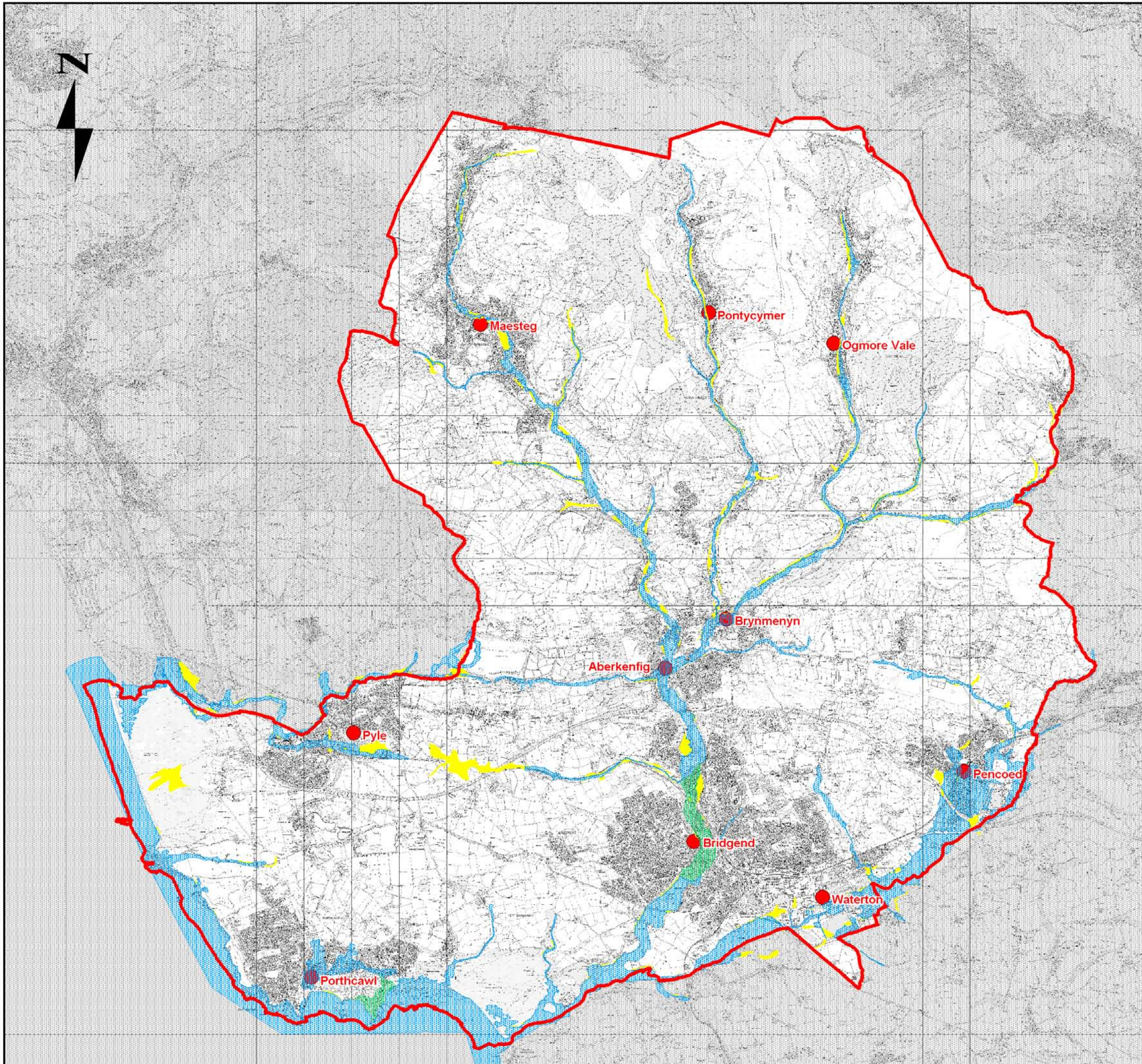
Note the property of this drawing and design is vested in Capita Symonds Limited and must not be copied or reproduced in any way without their written consent. This map is reproduced from Ordnance Survey material with permission of Ordnance Survey on behalf of the Controller of Her Majesty's Stationary Office. Crown copyright. Unauthorised reproduction infringes Crown copyright and may lead to prosecution or civil proceedings. (Bridgend County Borough Council Licence Number 100023405, 2009).

Map\_D.wor

Bridgend County Borough Council SFCA  
Map D - Flood Risk Management Infrastructure







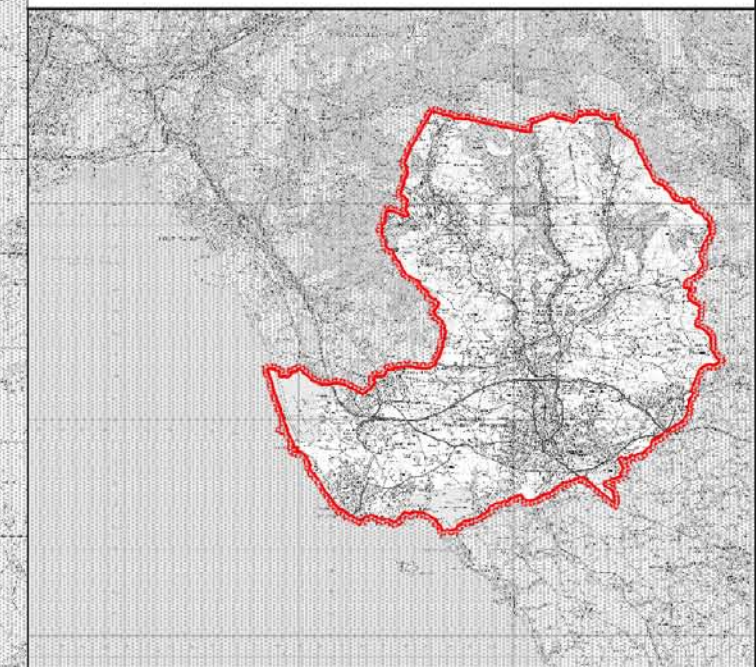
**CAPITA SYMONDS**



**Legend**

**SFCA Flood Zones**

-  Zone C2
-  Zone C1
-  Zone B
-  Settlements
-  BCBC Boundary



Scale at A3 1: 80,000  
Date 10/08/2010

DRAWN BY	CHECKED BY	AMENDED BY	ISSUING OFFICE
AB	CS	BW	BRISTOL

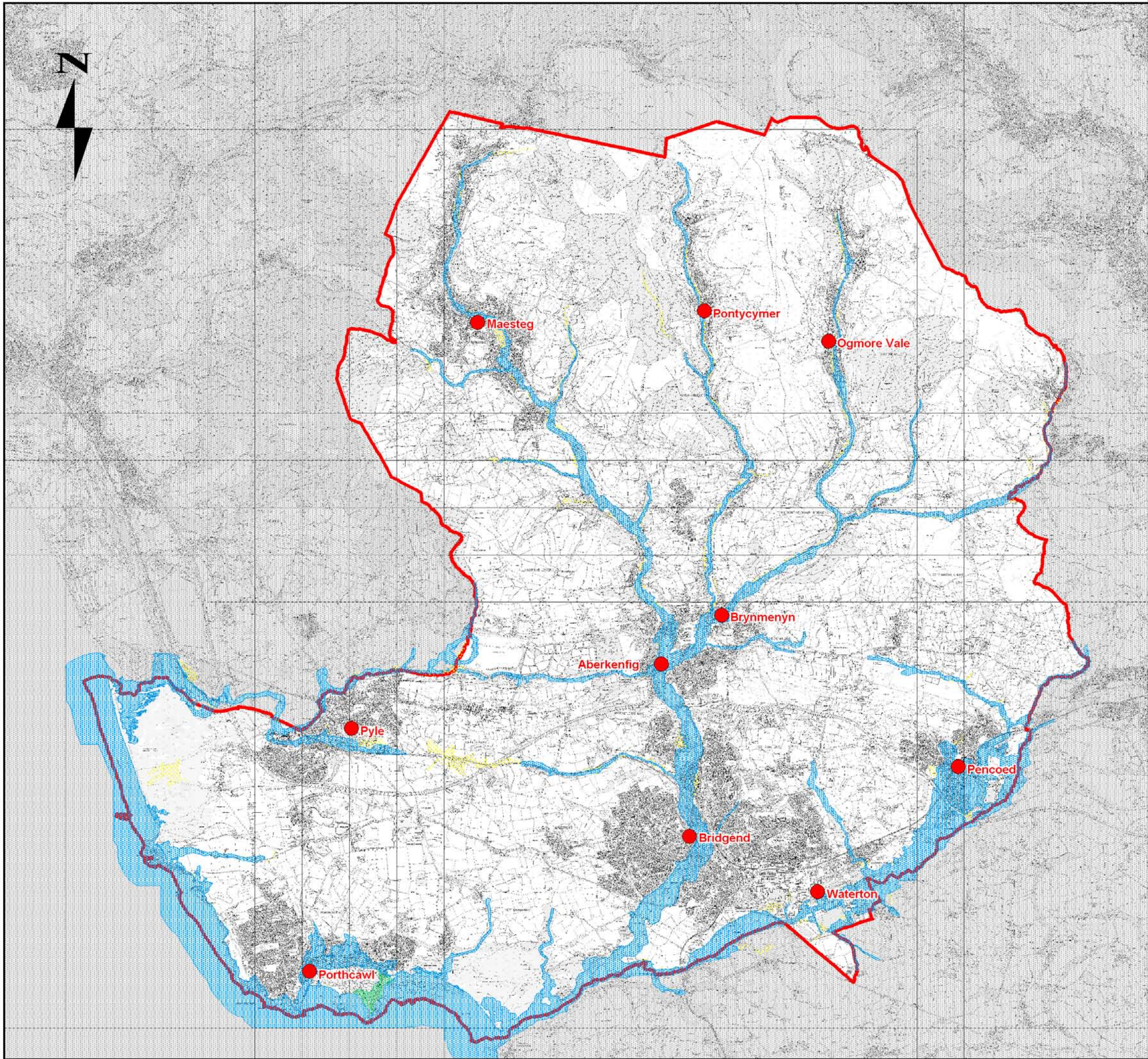
Note the property of this drawing and design is vested in Capita Symonds Limited and must not be copied or reproduced in any way without their written consent  
This map is reproduced from Ordnance Survey material with permission of Ordnance Survey on behalf of the Controller of Her Majesty's Stationary Office. Crown copyright. Unauthorised reproduction infringes Crown copyright and may lead to prosecution or civil proceedings. (Bridgend County Borough Council Licence Number 100023405, 2009).

Map\_F1.wor

**Bridgend County Borough Council SFCA  
Map F1 - Current SFCA Flood Zones**








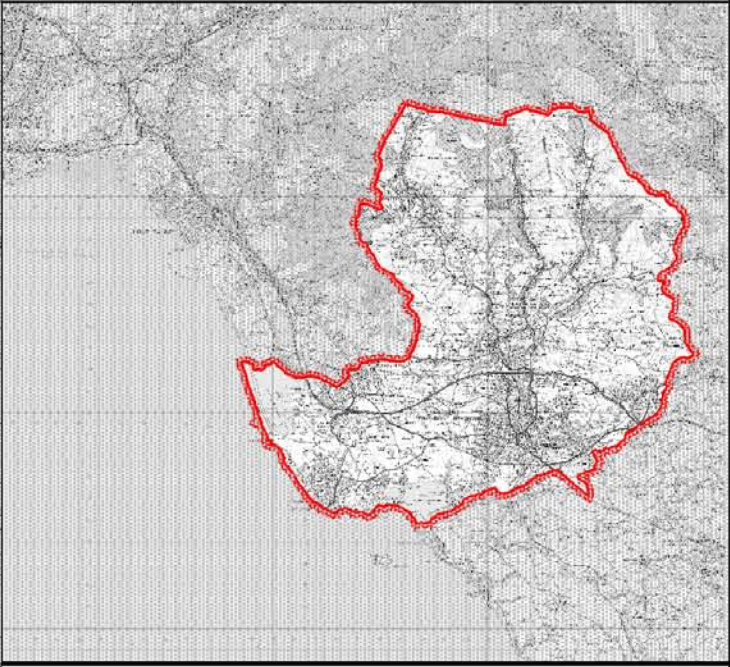
**CAPITA SYMONDS**



**Legend**

**SFCA Flood Zones**

-  Zone C2
-  Zone C1
-  Zone B
-  Settlements
-  BCBC Boundary



Scale at A3 1: 80,000  
Date 10/08/2010

DRAWN BY	CHECKED BY	AMENDED BY	ISSUING OFFICE
AB	CS	BW	BRISTOL

Note the property of this drawing and design is vested in Capita Symonds Limited and must not be copied or reproduced in any way without their written consent  
This map is reproduced from Ordnance Survey material with permission of Ordnance Survey on behalf of the Controller of Her Majesty's Stationary Office. Crown copyright. Unauthorised reproduction infringes Crown copyright and may lead to prosecution or civil proceedings. (Bridgend County Borough Council Licence Number 100023405, 2009).

Map\_F2.wor

**Bridgend County Borough Council SFCA  
Map F2 - Future SFCA Flood Zones**



**CAPITA SYMONDS**

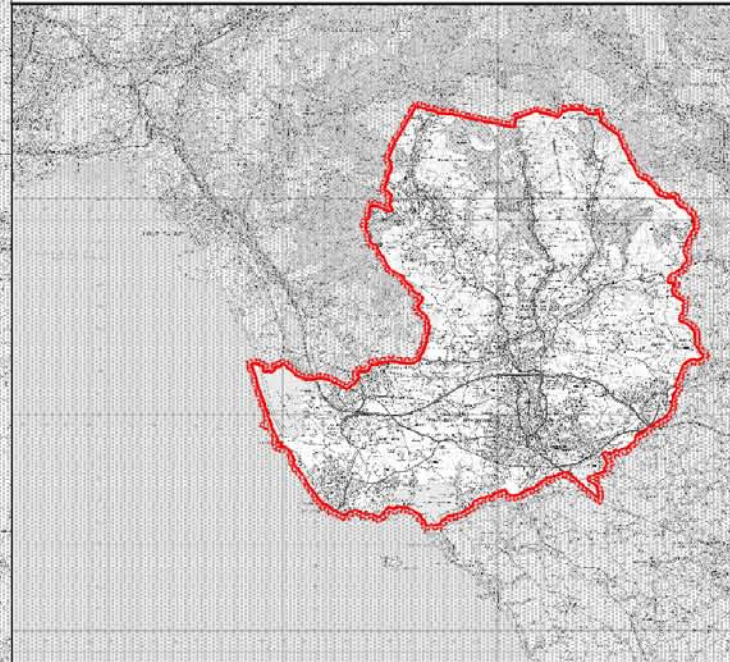
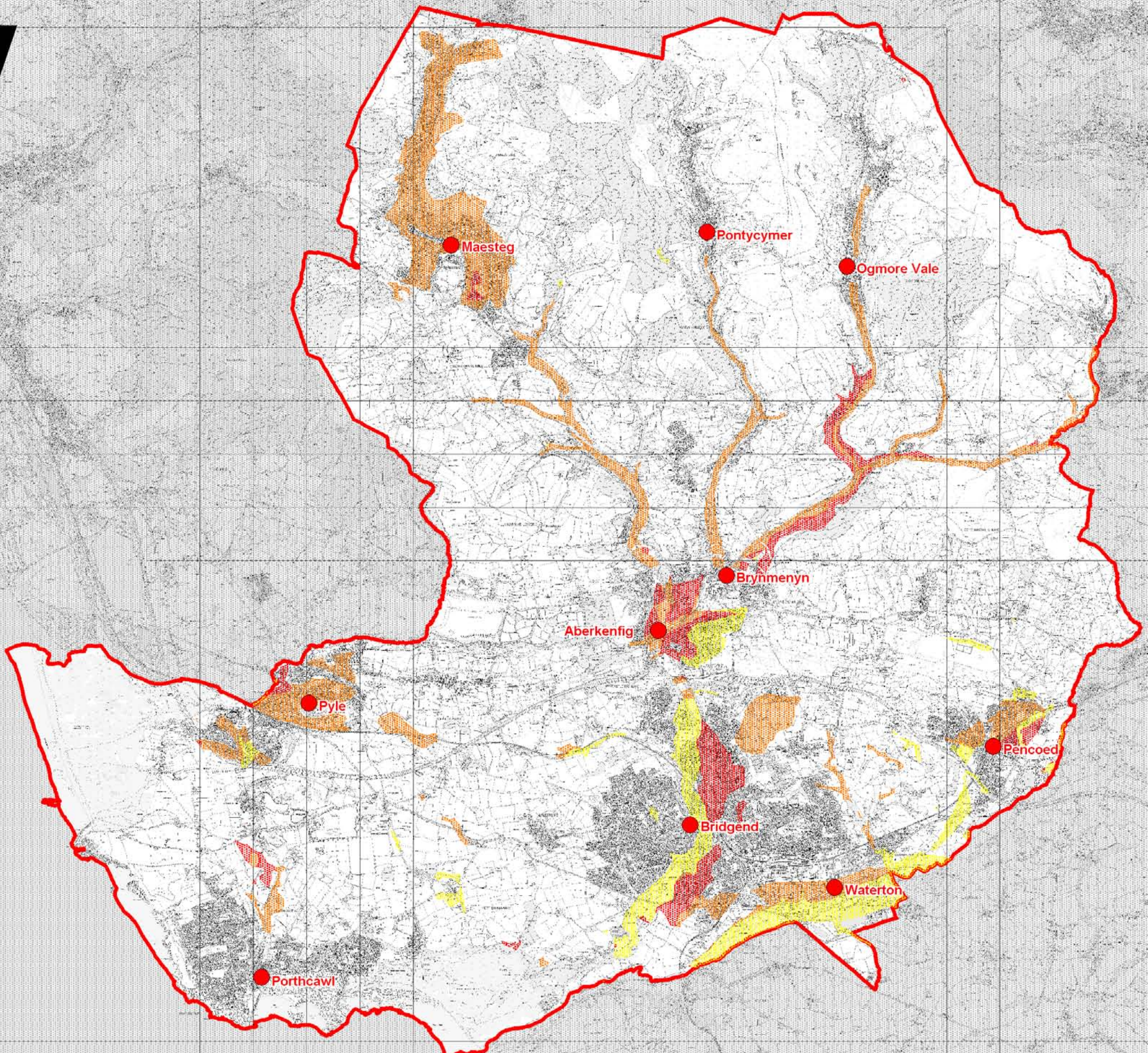


**Legend**  
Relative Susceptibility to Groundwater Flooding

- Low / Medium
- Medium / High
- High
- Low

BCBC Boundary

Settlements



Scale at A3 1: 80,000  
Date 10/08/2010

DRAWN BY	CHECKED BY	AMENDED BY	ISSUING OFFICE
AB	CS	BW	BRISTOL

Note the property of this drawing and design is vested in Capita Symonds Limited and must not be copied or reproduced in any way without their written consent  
This map is reproduced from Ordnance Survey material with permission of Ordnance Survey on behalf of the Controller of Her Majesty's Stationary Office. Crown copyright. Unauthorised reproduction infringes Crown copyright and may lead to prosecution or civil proceedings. (Bridgend County Borough Council Licence Number 100023405, 2009).

Map\_F2.wor


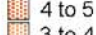
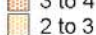
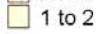





Bridgend County Borough Council SFCA  
Map G - Flooding from Groundwater

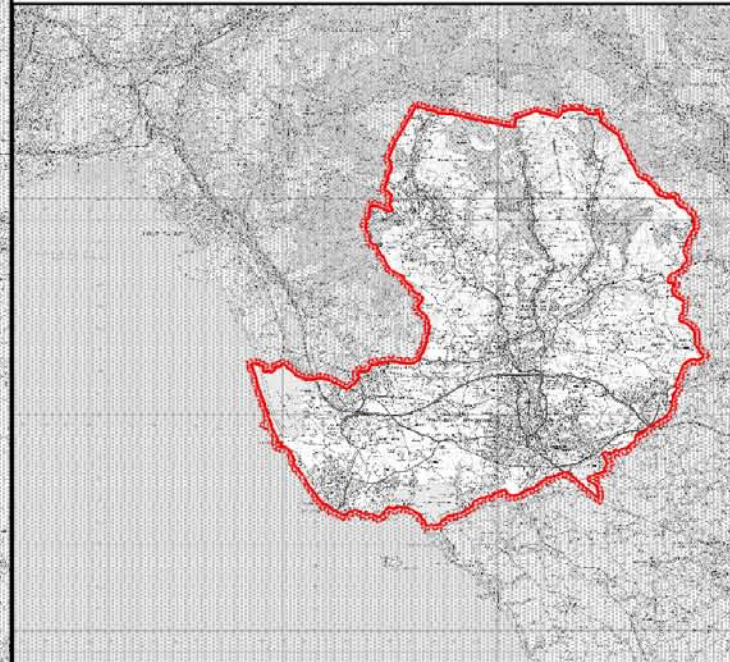
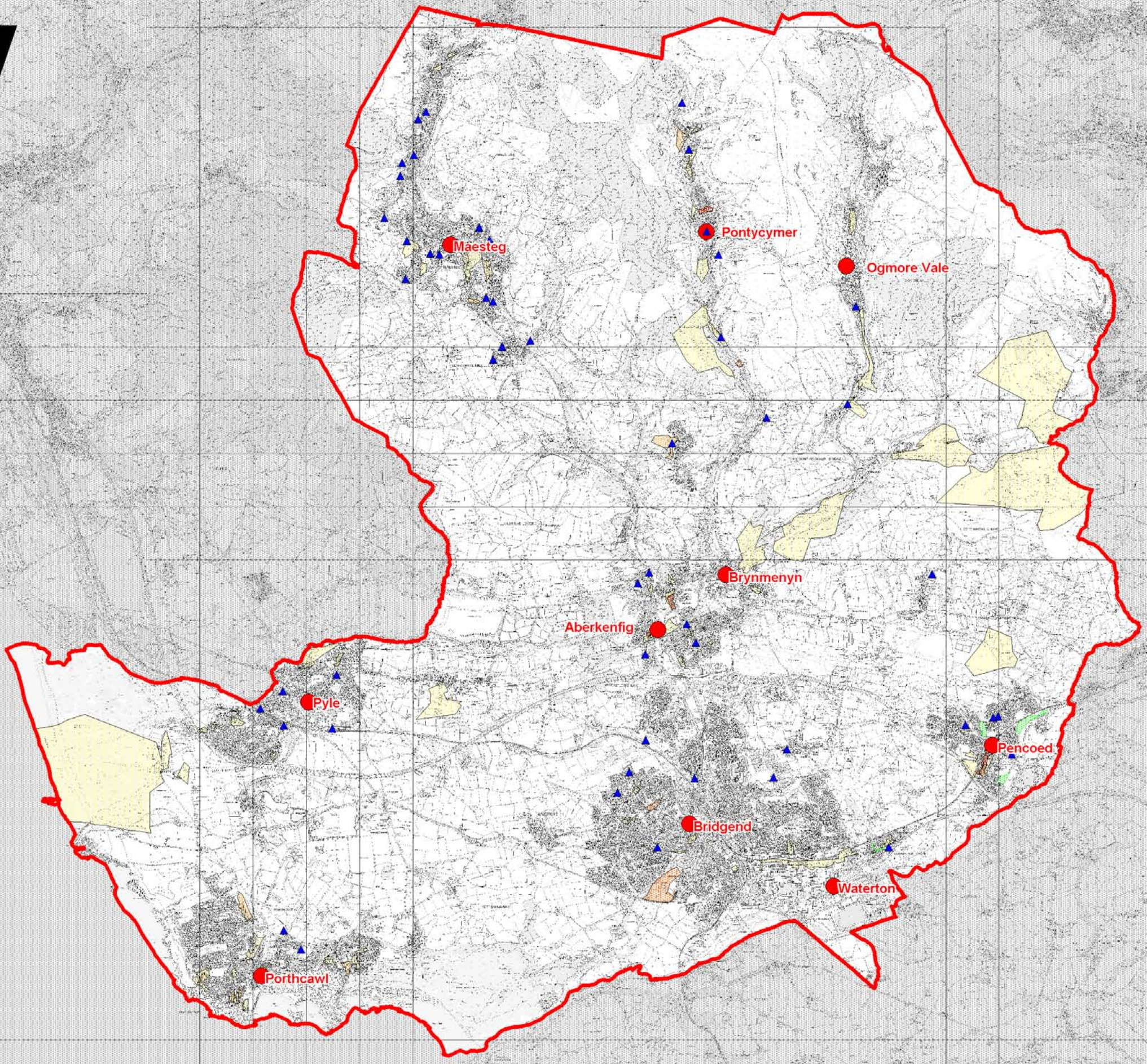


**CAPITA SYMONDS**



**Legend**  
Recorded No. of Sewer Flooding Incidents (Welsh Water)

-  5 to 8
-  4 to 5
-  3 to 4
-  2 to 3
-  1 to 2
  
-  Historical flood outlines
-  BCBC Historical Flooding Records
-  Settlements
-  BCBC Boundary



Scale at A3 1: 80,000  
Date 10/08/2010

DRAWN BY	CHECKED BY	AMENDED BY	ISSUING OFFICE
AB	CS	BW	BRISTOL

Note the property of this drawing and design is vested in Capita Symonds Limited and must not be copied or reproduced in any way without their written consent  
This map is reproduced from Ordnance Survey material with permission of Ordnance Survey on behalf of the Controller of Her Majesty's Stationary Office. Crown copyright. Unauthorised reproduction infringes Crown copyright and may lead to prosecution or civil proceedings. (Bridgend County Borough Council Licence Number 100023405, 2009).

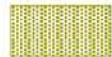





Map\_HF.wor

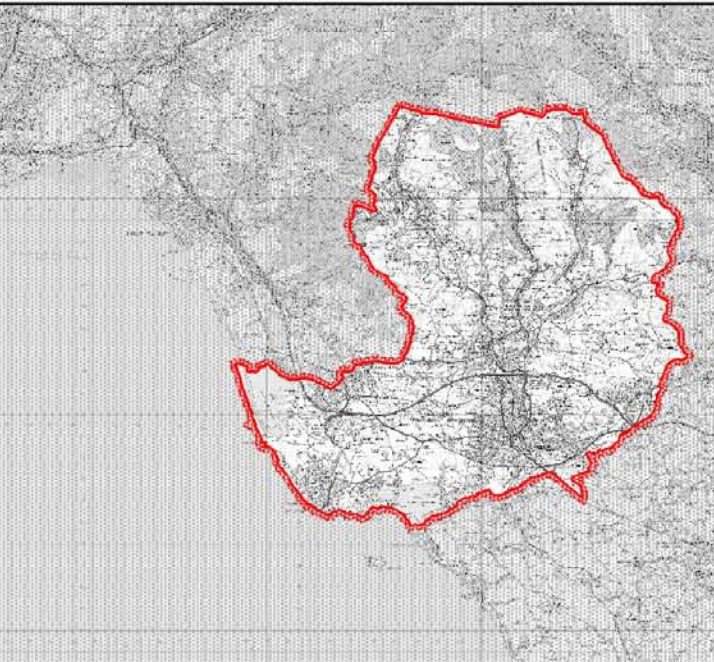
Bridgend County Borough Council SFCA  
Map HF - Historical Flooding Records



**CAPITA SYMONDS**



- Legend**
-  Features potentially affecting natural drainage pathways
  -  OS Water Features (natural and artificial water bodies)
  -  BCBC Boundary
  -  Strategic Sites
  -  Main Rivers
  -  Settlements



Scale at A3 1: 80,000  
Date 10/08/2010

DRAWN BY	CHECKED BY	AMENDED BY	ISSUING OFFICE
AB	CS	BW	BRISTOL

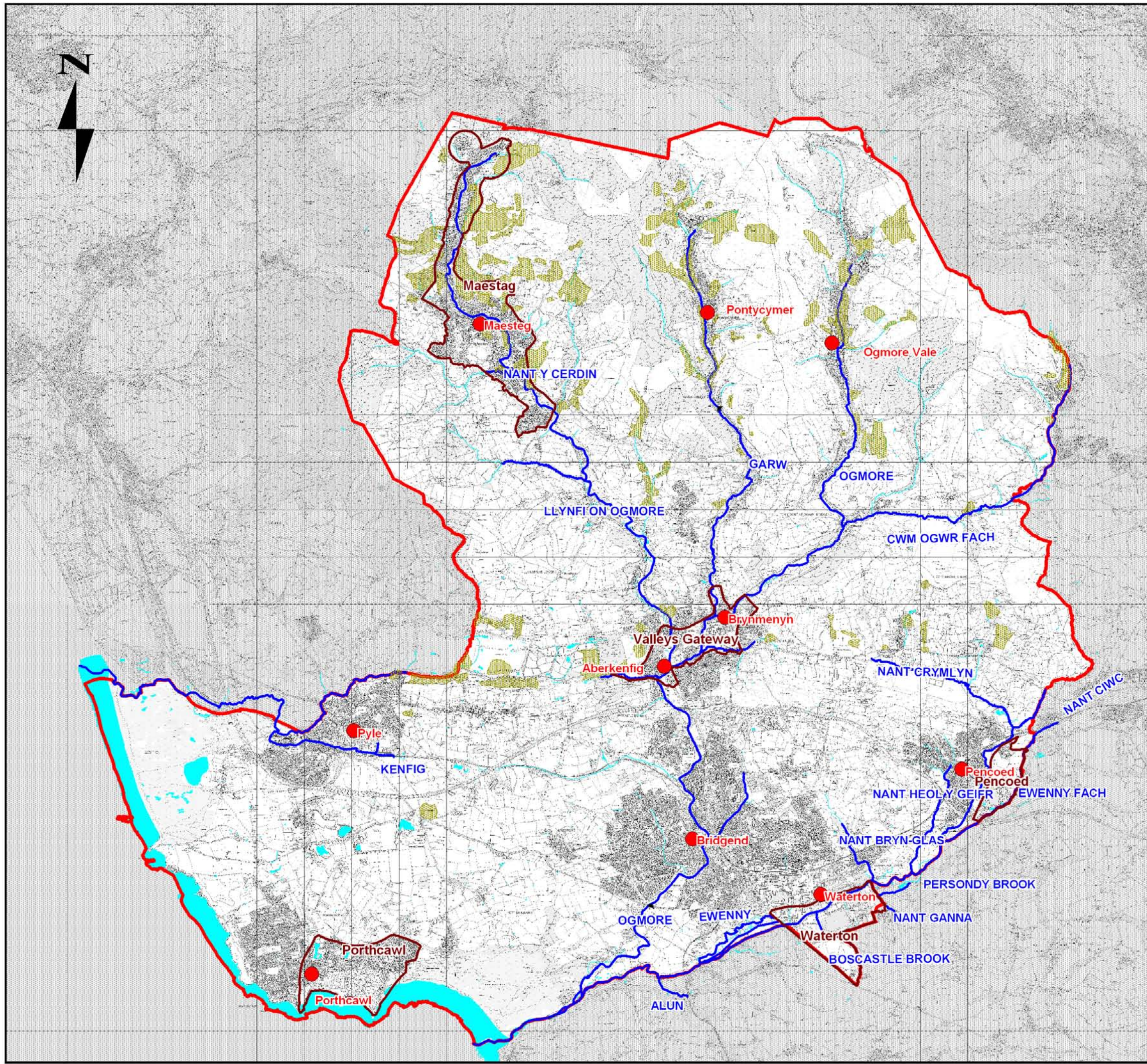
Note the property of this drawing and design is vested in Capita Symonds Limited and must not be copied or reproduced in any way without their written consent  
 This map is reproduced from Ordnance Survey material with permission of Ordnance Survey on behalf of the Controller of Her Majesty's Stationary Office. Crown copyright. Unauthorised reproduction infringes Crown copyright and may lead to prosecution or civil proceedings. (Bridgend County Borough Council Licence Number 100023405, 2009).

Map\_O.wor

Bridgend County Borough Council SFCA  
 Map O - Study Area Overview



**CAPITA SYMONDS**





**Legend**  
Historical Sewer Flooding Risk

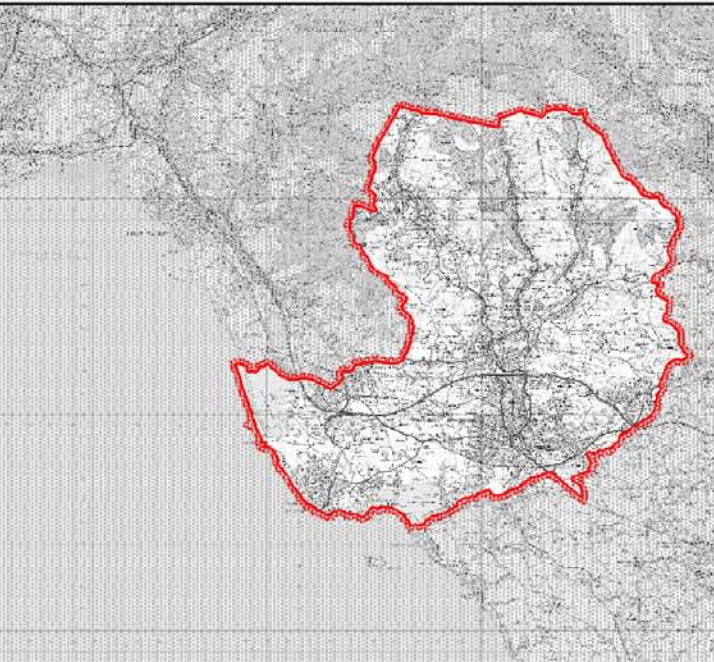
- High
- Medium / High
- Medium / Low
- Low

▲ Historical Flooding Records

□ BCBC Boundary

● Settlements

Note: the methodology for delineating the sewer flood risk is detailed in Section 10 of the SFRA Technical Report



Scale at A3 1:80,000  
Date 10/08/2010

DRAWN BY	CHECKED BY	AMENDED BY	ISSUING OFFICE
AB	CS	BW	BRISTOL

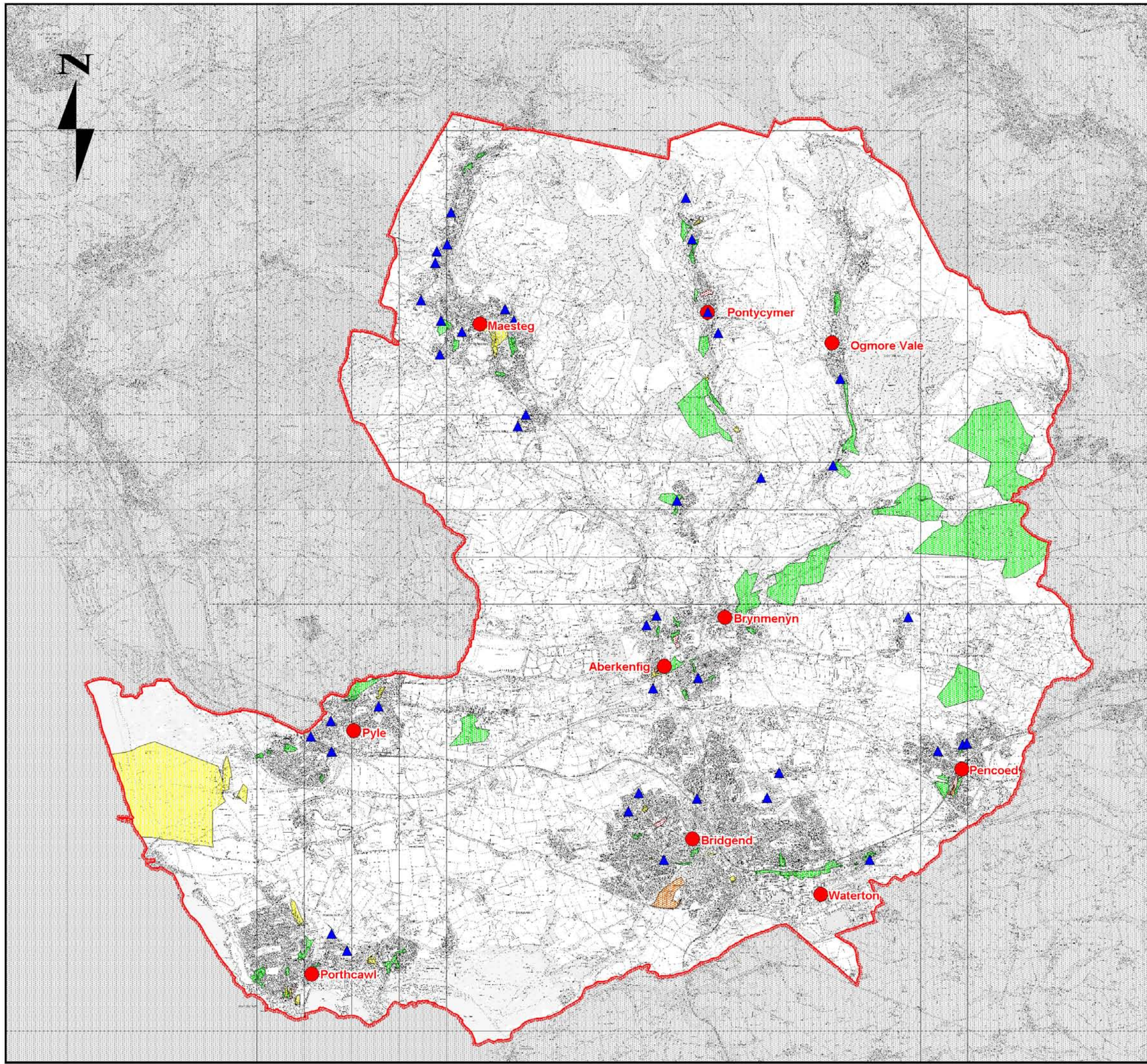
Note the property of this drawing and design is vested in Capita Symonds Limited and must not be copied or reproduced in any way without their written consent  
This map is reproduced from Ordnance Survey material with permission of Ordnance Survey on behalf of the Controller of Her Majesty's Stationary Office. Crown copyright. Unauthorised reproduction infringes Crown copyright and may lead to prosecution or civil proceedings. (Bridgend County Borough Council Licence Number 100023405, 2009).

Map\_S.wor

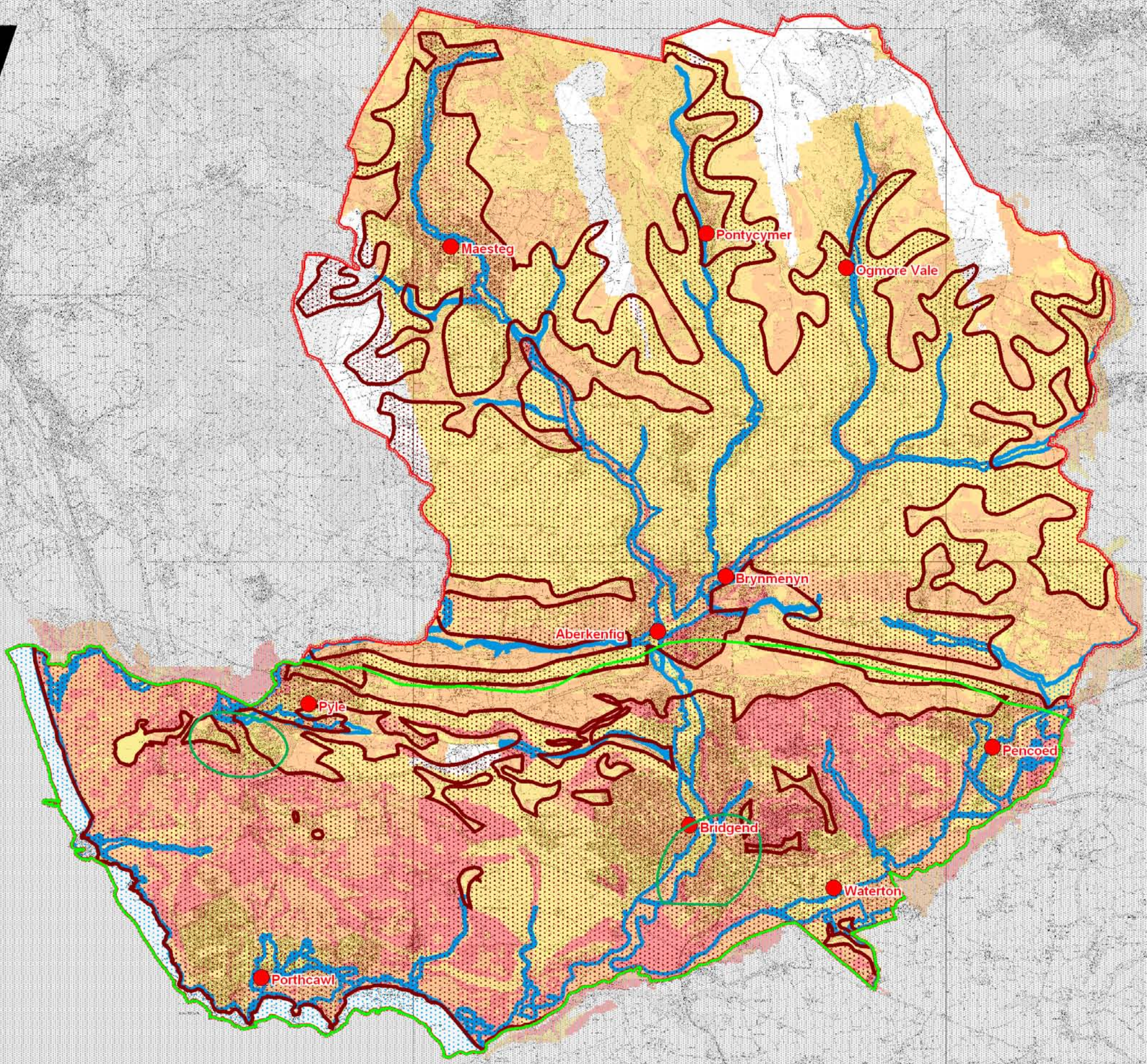
Bridgend County Borough Council SFCA  
Map S - Flooding from Sewers and Drains



**CAPITA SYMONDS**







**Legend**

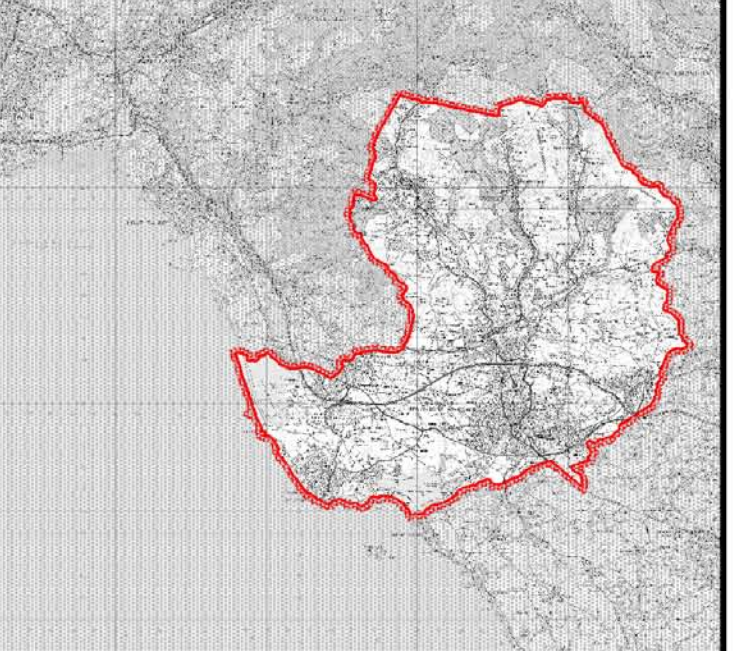
- Intermediately and highly vulnerable aquifers
- DAM Zone C
- BCBC Boundary
- Settlements
- Possible Limestone Cavities
- Greater Risk Limestone Cavities

**Suitability for Infiltration Techniques based on GIS analysis**

- Low
- Medium Low
- Medium High
- High

**Notes:**

1. Areas shown as white have no LiDAR coverage, so there has been no analysis of the suitability for infiltration based SuDS.
2. The methodology for delineating SuDS suitability is detailed in Section 2 of the Technical Report.



Scale at A3 1: 80,000  
Date 10/08/2010

DRAWN BY	CHECKED BY	AMENDED BY	ISSUING OFFICE
AB	CS	BW	BRISTOL

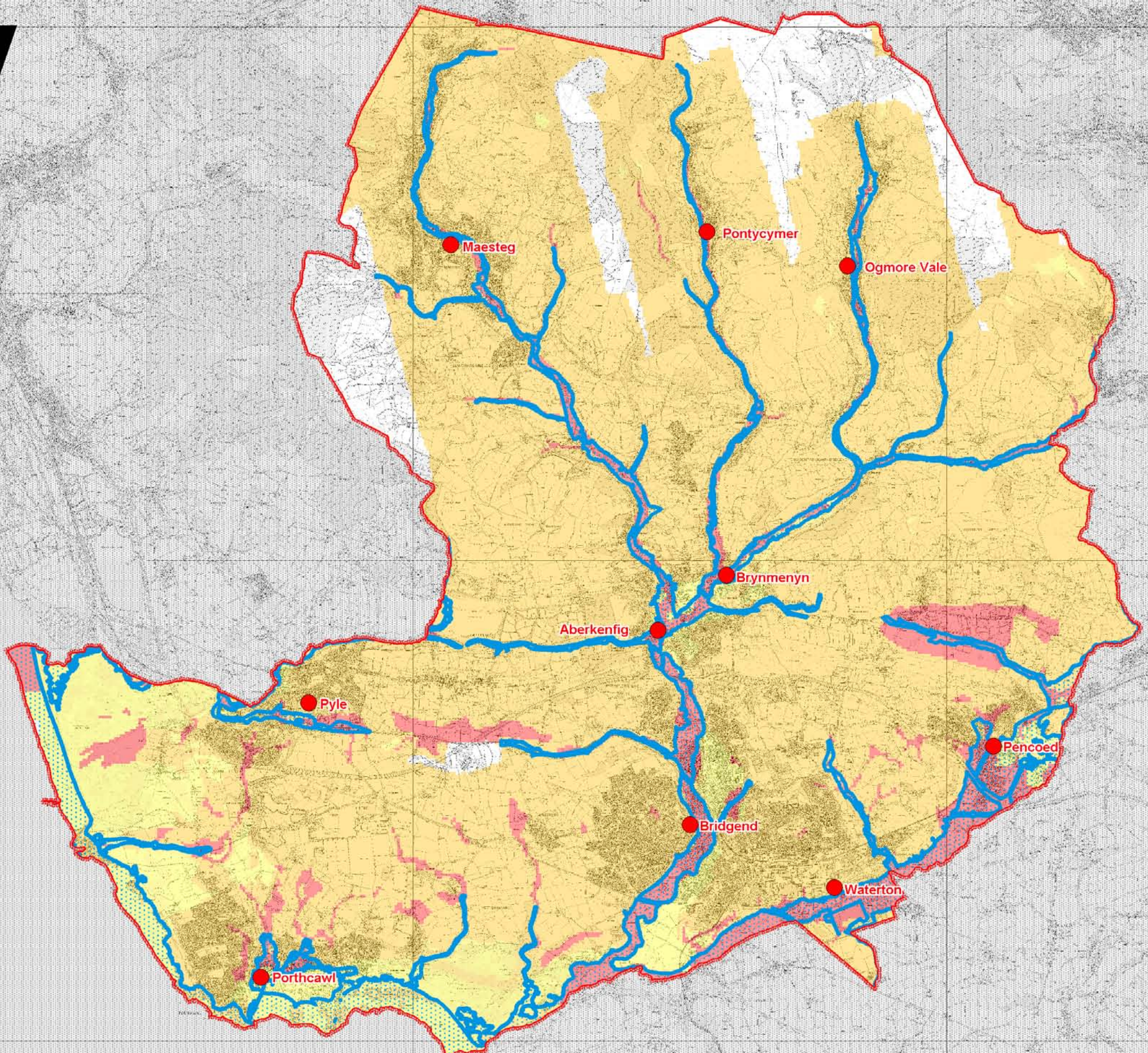
Note the property of this drawing and design is vested in Capita Symonds Limited and must not be copied or reproduced in any way without their written consent  
This map is reproduced from Ordnance Survey material with permission of Ordnance Survey on behalf of the Controller of Her Majesty's Stationary Office. Crown copyright. Unauthorised reproduction infringes Crown copyright and may lead to prosecution or civil proceedings. (Bridgend County Borough Council Licence Number 100023405, 2009).

Map\_SS1.wor

Bridgend County Borough Council SFCA  
Map SS1 - Suitability of Infiltration based SUDS Techniques



**CAPITA SYMONDS**



**Legend**

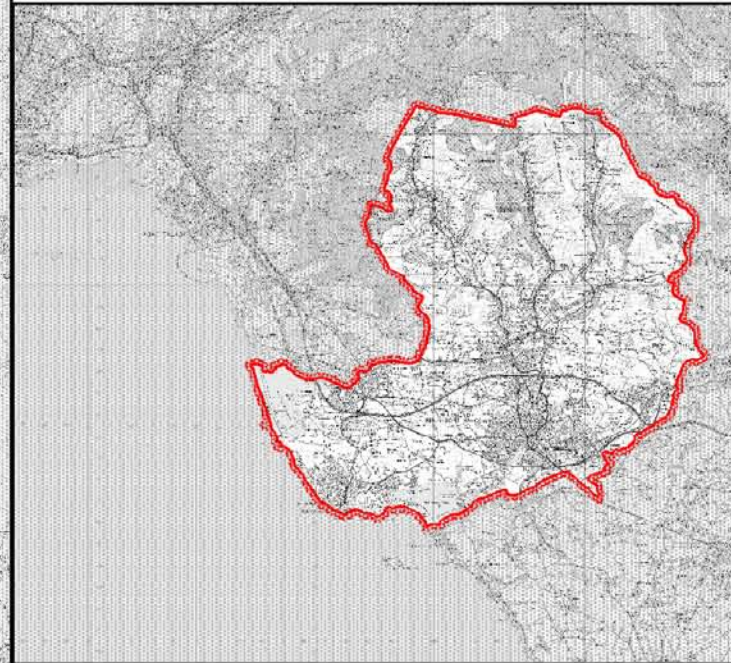
- Zone C
- Settlements
- BCBC Boundary

**Suitability of Storage based SuDS Techniques**

- Low
- Medium
- High

**Note:**

1. Areas shown as white have no LiDAR coverage, so there has been no analysis of the suitability of storage based SuDS techniques.
2. The methodology for delineating SuDS suitability is detailed in Section 2 of the technical report.



Scale at A3 1: 80,000  
Date 10/08/2010

DRAWN BY	CHECKED BY	AMENDED BY	ISSUING OFFICE
AB	CS	BW	BRISTOL

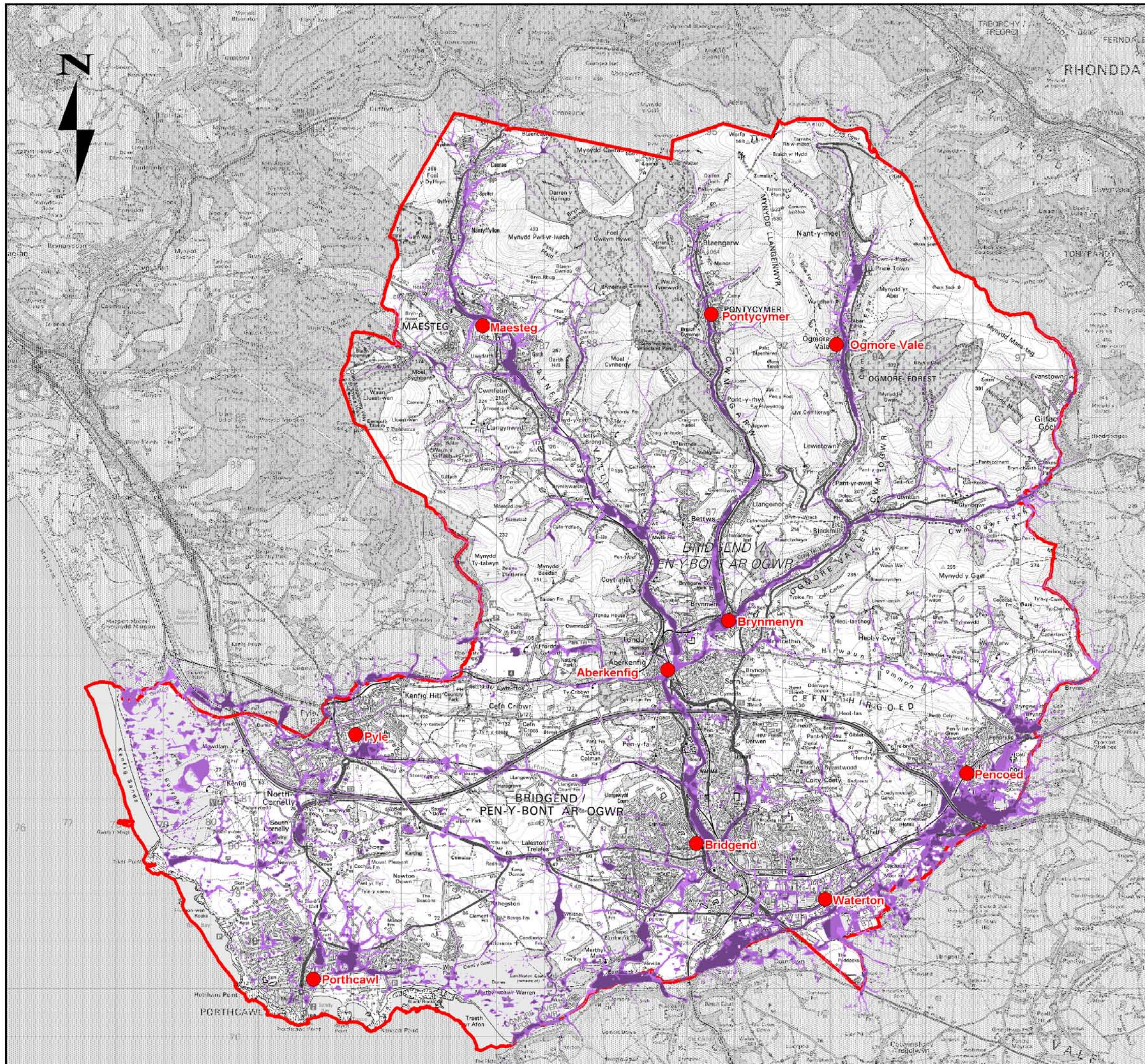
Note the property of this drawing and design is vested in Capita Symonds Limited and must not be copied or reproduced in any way without their written consent  
This map is reproduced from Ordnance Survey material with permission of Ordnance Survey on behalf of the Controller of Her Majesty's Stationary Office. Crown copyright. Unauthorised reproduction infringes Crown copyright and may lead to prosecution or civil proceedings. (Bridgend County Borough Council Licence Number 100023405, 2009).

Map\_SS2.wor

**Bridgend County Borough Council SFCA**  
**Map SS2 - Suitability of Storage based SuDS Techniques**



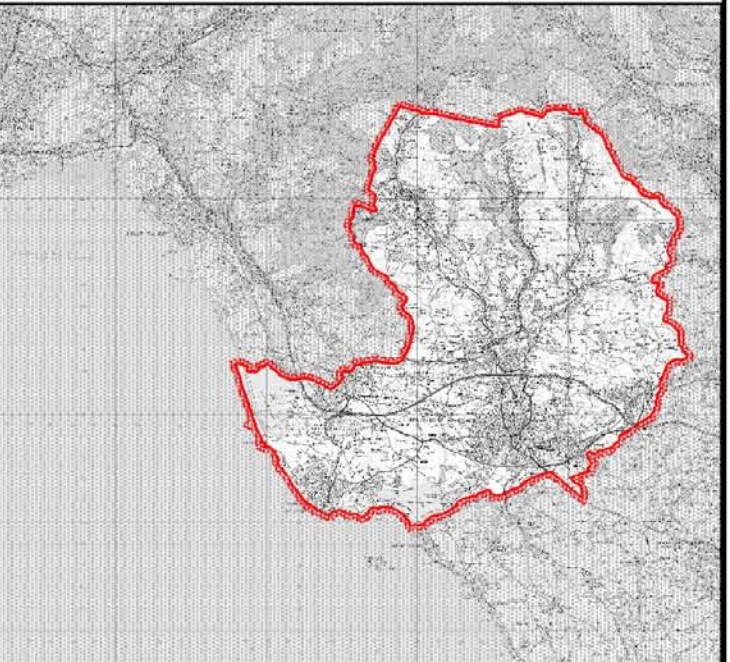
**CAPITA SYMONDS**



**Legend**

- More
- Intermediate
- Less
- BCBC Boundary
- Settlements

Note: the methodology for delineating susceptibility to surface water flooding is detailed in Section 8



Scale at A3 1: 80,000  
Date 10/08/2010

DRAWN BY	CHECKED BY	AMENDED BY	ISSUING OFFICE
AB	CS	BW	BRISTOL

Note the property of this drawing and design is vested in Capita Symonds Limited and must not be copied or reproduced in any way without their written consent  
This map is reproduced from Ordnance Survey material with permission of Ordnance Survey on behalf of the Controller of Her Majesty's Stationary Office. Crown copyright. Unauthorised reproduction infringes Crown copyright and may lead to prosecution or civil proceedings. (Bridgend County Borough Council Licence Number 100023405, 2009).

Map\_SW.wor

Bridgend County Borough Council SFCA  
Map SW - Flooding from Surface Water



**CAPITA SYMONDS**