

O V E A R U P & P A R T N E R S • C A M L I N L O N S D A L E

**Volume II
Illustrations**

B R I D G E N D
T O W N C E N T R E S T U D Y

Bridgend County Borough Council

Welsh Development Agency

Bridgend Town Centre Study

Final Report

October 1996

Ove Arup and Partners
Camlin Lonsdale
in association with
Cooke and Arkwright
and Artworks Wales

Ove Arup & Partners Consulting Engineers
Cambrian Buildings Mount Stuart Square Cardiff CF1 6QP
Telephone +44 (0)1222 473727 Facsimile +44 (0)1222 472277

Job number 50528/EC Report number 96/3135

VOLUMES

Volume I Main Report

Volume II Illustrations

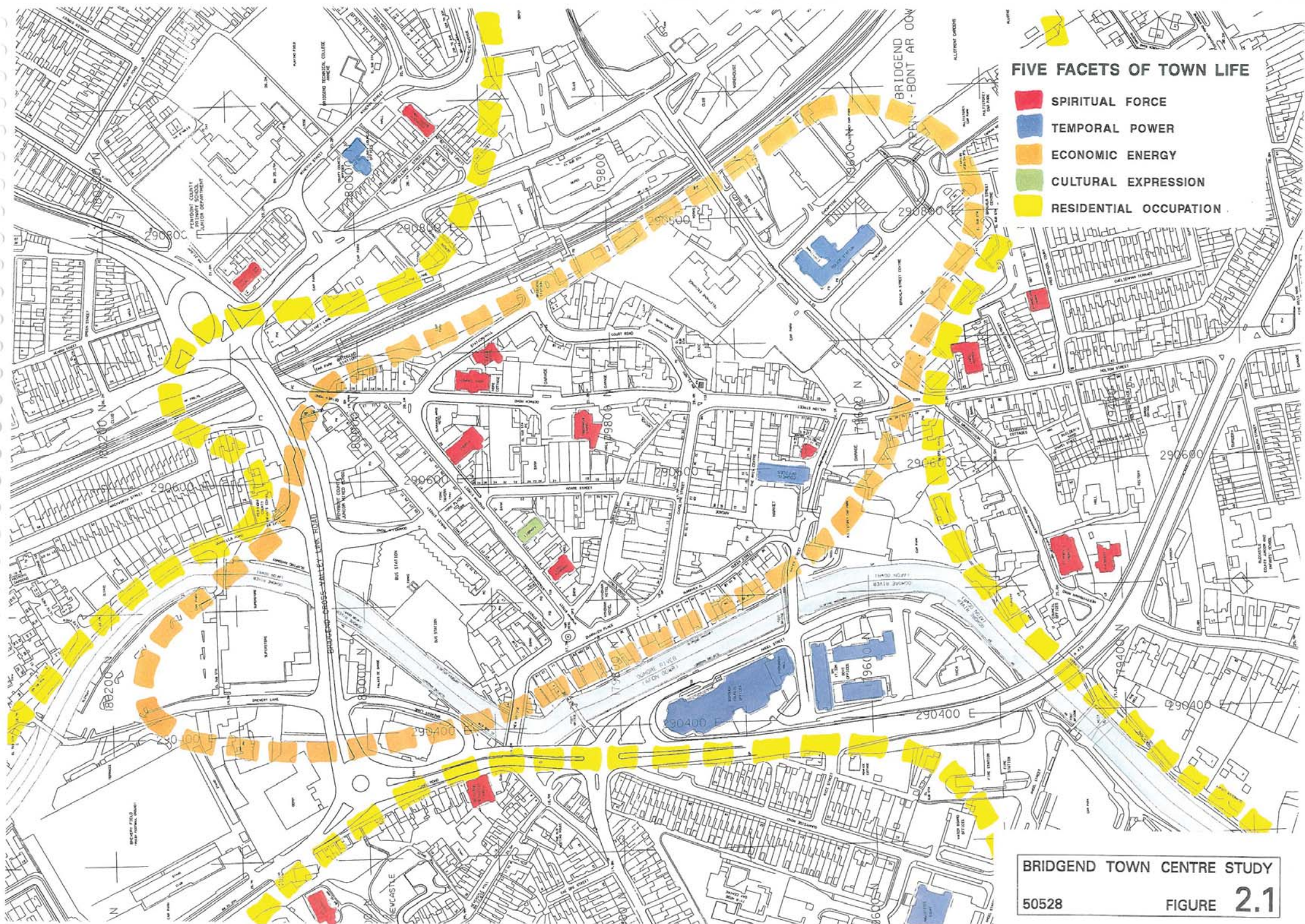
Volume III Appendices A to H

Volume IV Appendix I

VOLUME II

CONTENTS

- Figure 2.1 Five Facets of Town Life
- Figure 2.2 Topographical Context
- Figure 2.3 Pilgrim Routes and Islands
- Figure 2.4 Barriers and Connections
- Figure 2.5 Existing Urban Typology
- Figure 3.1 Retail Areas
- Figure 3.2 Property Ownership
- Figure 3.3 Retail Catchment Area
- Figure 3.4 Upper Floor Uses
- Figure 3.5 Night-time Activities
- Figure 4.1 Pedestrian Movements
- Figure 4.2 Existing Traffic Features
- Figure 4.3 Distribution of Bus Services
- Figure 4.4 Proposed Traffic Regime
- Figure 4.5 Off-Street Car Parks
- Figure 5.1 Potential Development Opportunities
- Figure 6.1 The Resolution of the Town Centre
- Figure 6.2 Proposed Town Centre
- Figure 6.3 Proposed Squares and Connections
- Figure 6.4 The Nine Sponsors of Bridgend
- Figure 7.1 Recommended Strategy
- Figure 7.2 Typical Street Section - 24 Hour Free Access
- Figure 7.3 Typical Street Section - Limited Free Access
- Figure 7.4 Typical Street Section - Limited Service Access Only
- Figure 7.5 Typical Street Section - All Vehicles Prohibited
- Figure 7.6 Illustration of Proposals
- Figure 7.7 Illustration of Proposals
- Figure 7.8 Illustration of Proposals
- Figure 8.1 Phasing Proposals



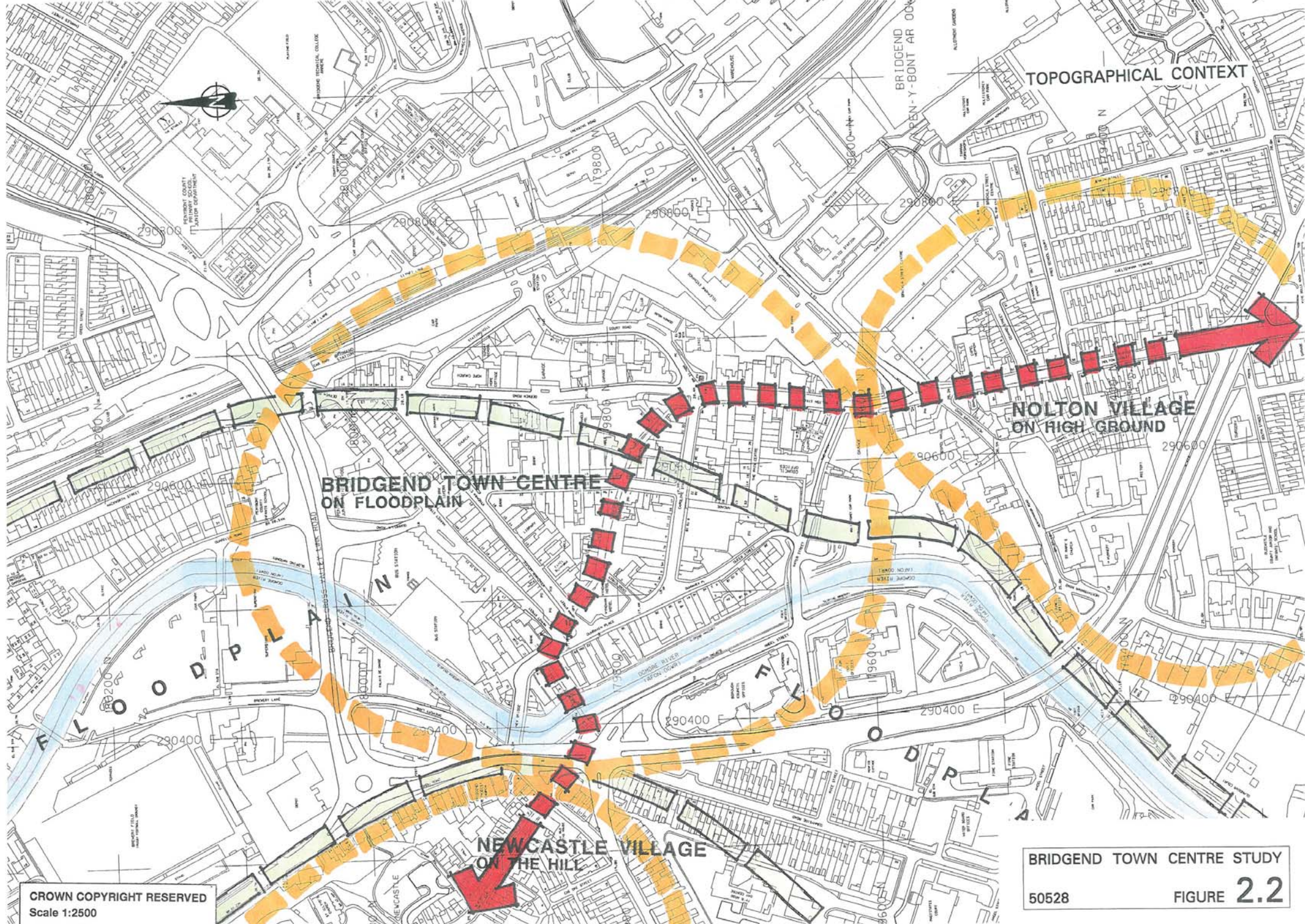
FIVE FACETS OF TOWN LIFE

- SPIRITUAL FORCE
- TEMPORAL POWER
- ECONOMIC ENERGY
- CULTURAL EXPRESSION
- RESIDENTIAL OCCUPATION

BRIDGEND TOWN CENTRE STUDY

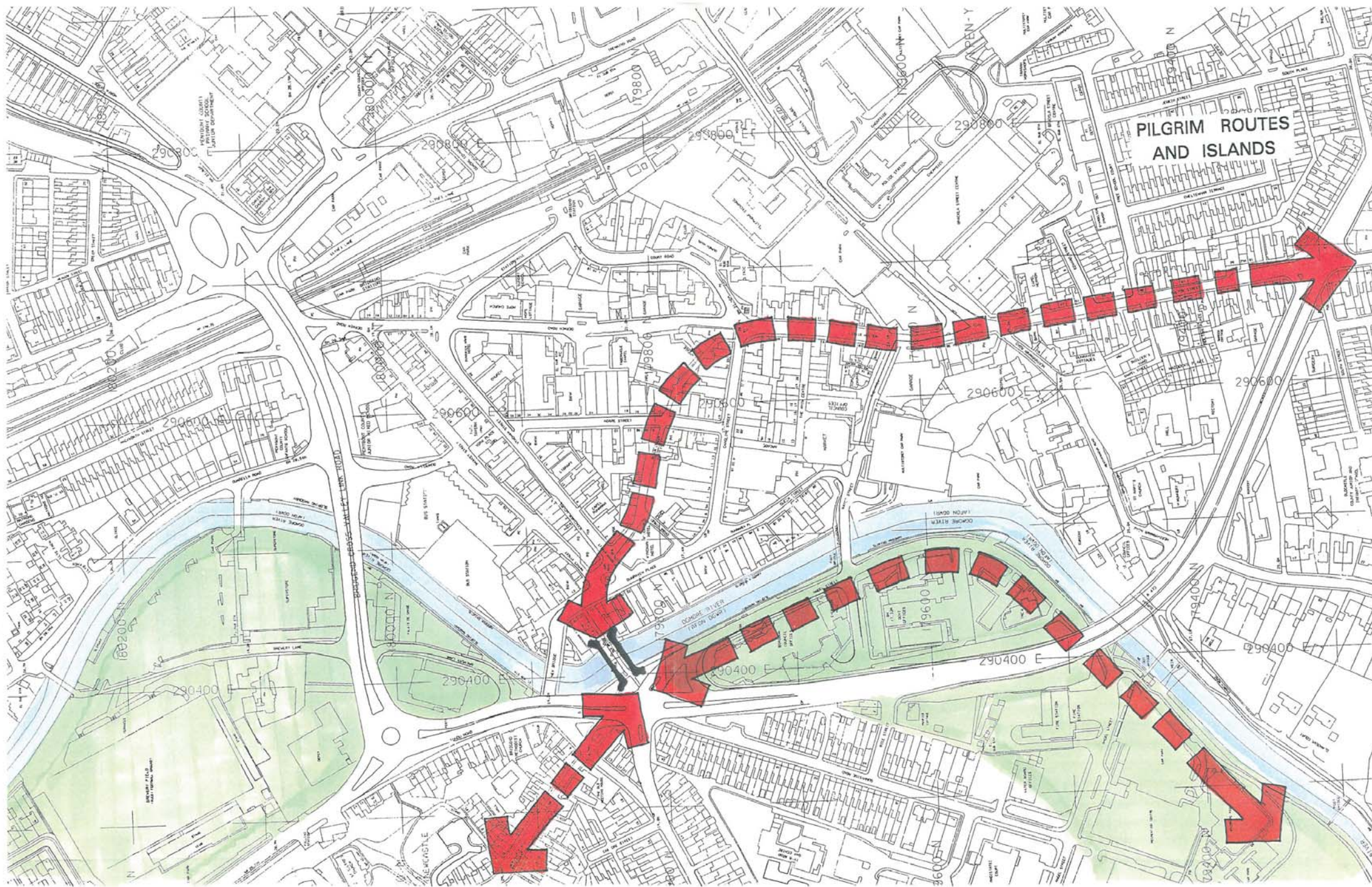
50528

FIGURE 2.1



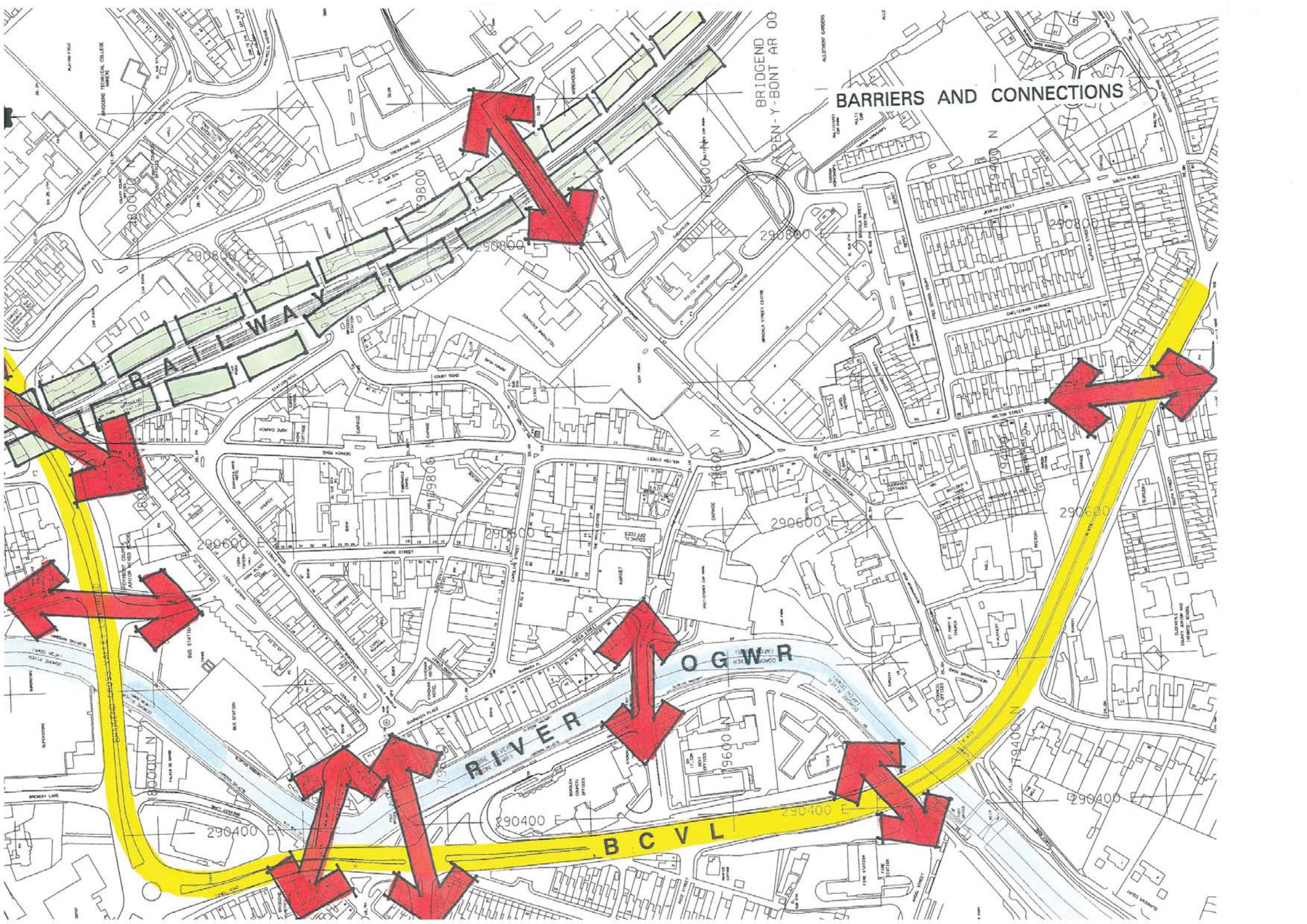
CROWN COPYRIGHT RESERVED
Scale 1:2500

BRIDGEND TOWN CENTRE STUDY
50528
FIGURE 2.2



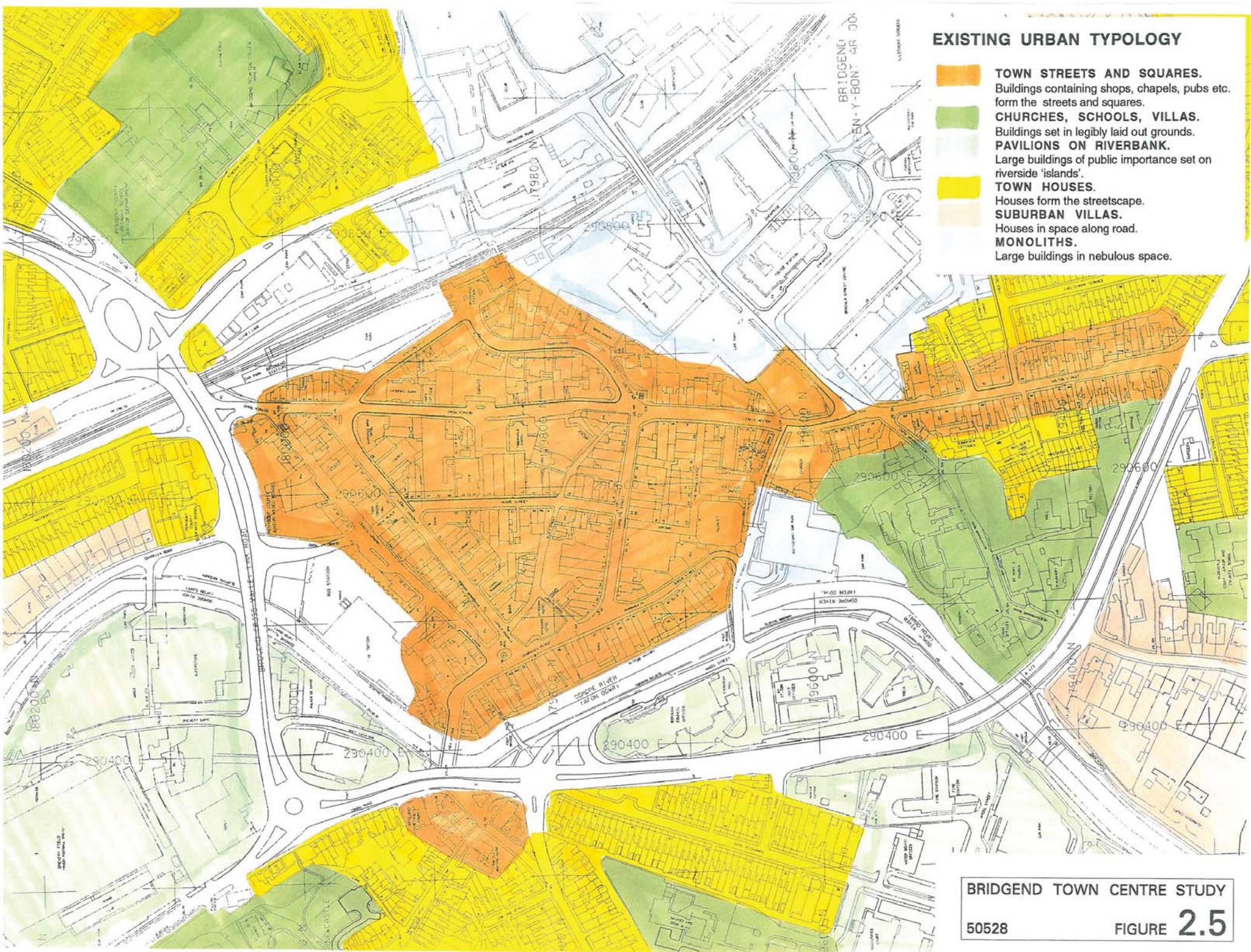
BRIDGEND TOWN CENTRE STUDY
50528 FIGURE 2.3

BARRIERS AND CONNECTIONS



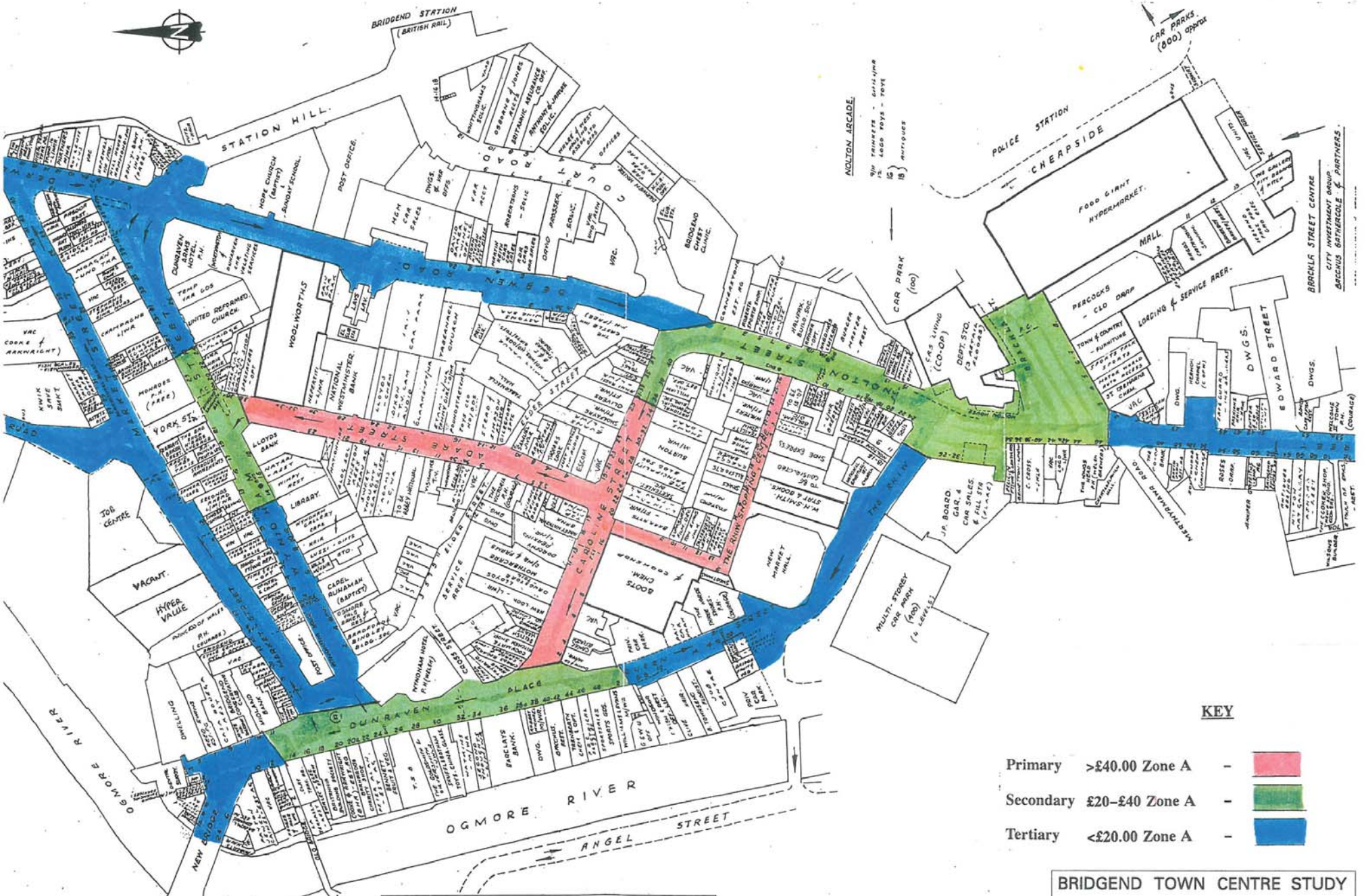
EXISTING URBAN TYPOLOGY

- TOWN STREETS AND SQUARES.**
Buildings containing shops, chapels, pubs etc. form the streets and squares.
- CHURCHES, SCHOOLS, VILLAS.**
Buildings set in legibly laid out grounds.
- PAVILIONS ON RIVERBANK.**
Large buildings of public importance set on riverside 'islands'.
- TOWN HOUSES.**
Houses form the streetscape.
- SUBURBAN VILLAS.**
Houses in space along road.
- MONOLITHS.**
Large buildings in nebulous space.



BRIDGEND TOWN CENTRE STUDY
50528 FIGURE 2.5

RETAIL AREAS



KEY

- Primary >£40.00 Zone A -
- Secondary £20-£40 Zone A -
- Tertiary <£20.00 Zone A -

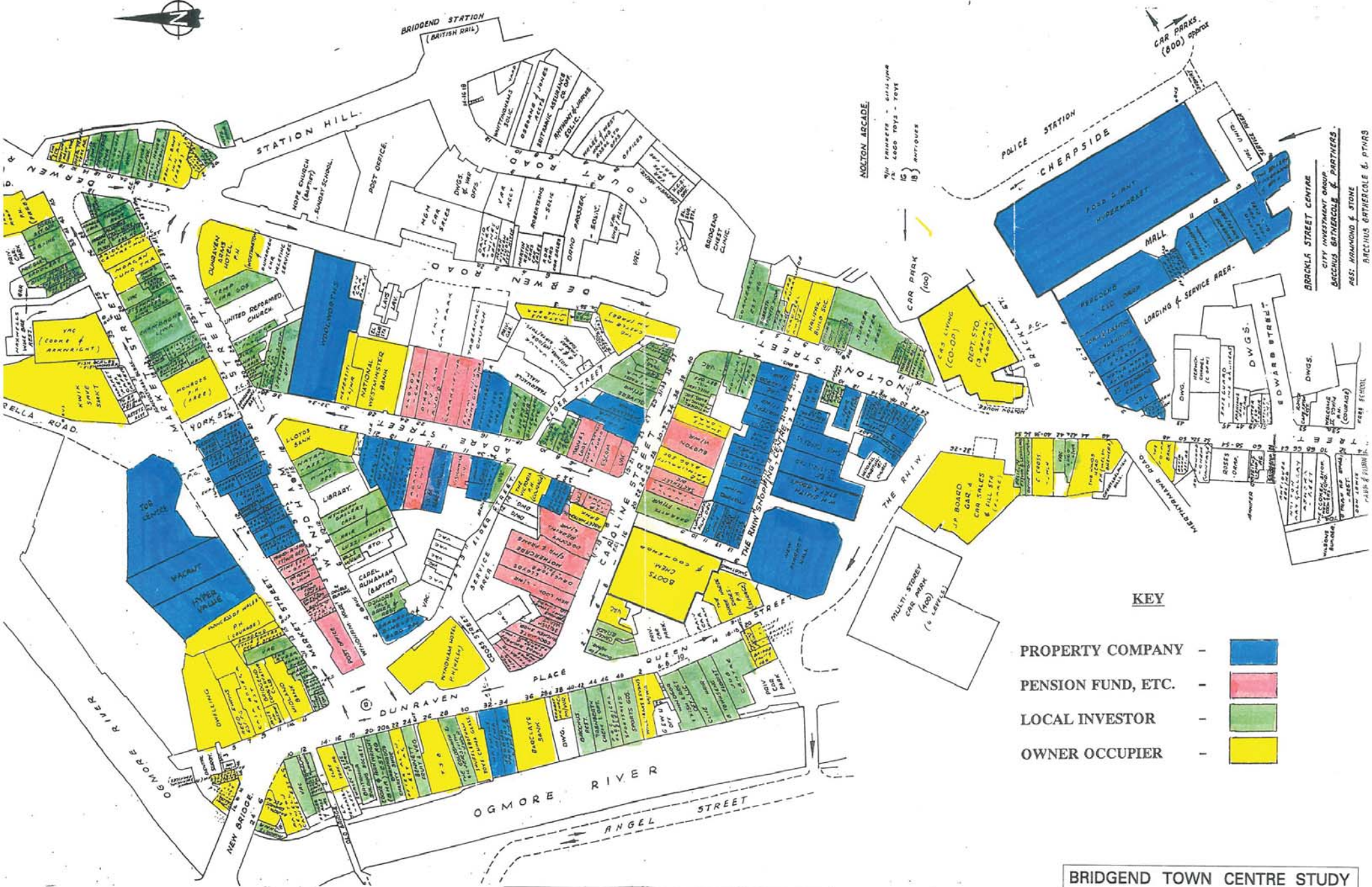
A GOAD PLAN FOR BRIDGEND (AUGUST 1994) FORMS THE BASE FOR THIS DRAWING

BRIDGEND TOWN CENTRE STUDY

50528

FIGURE 3.1

PROPERTY OWNERSHIP

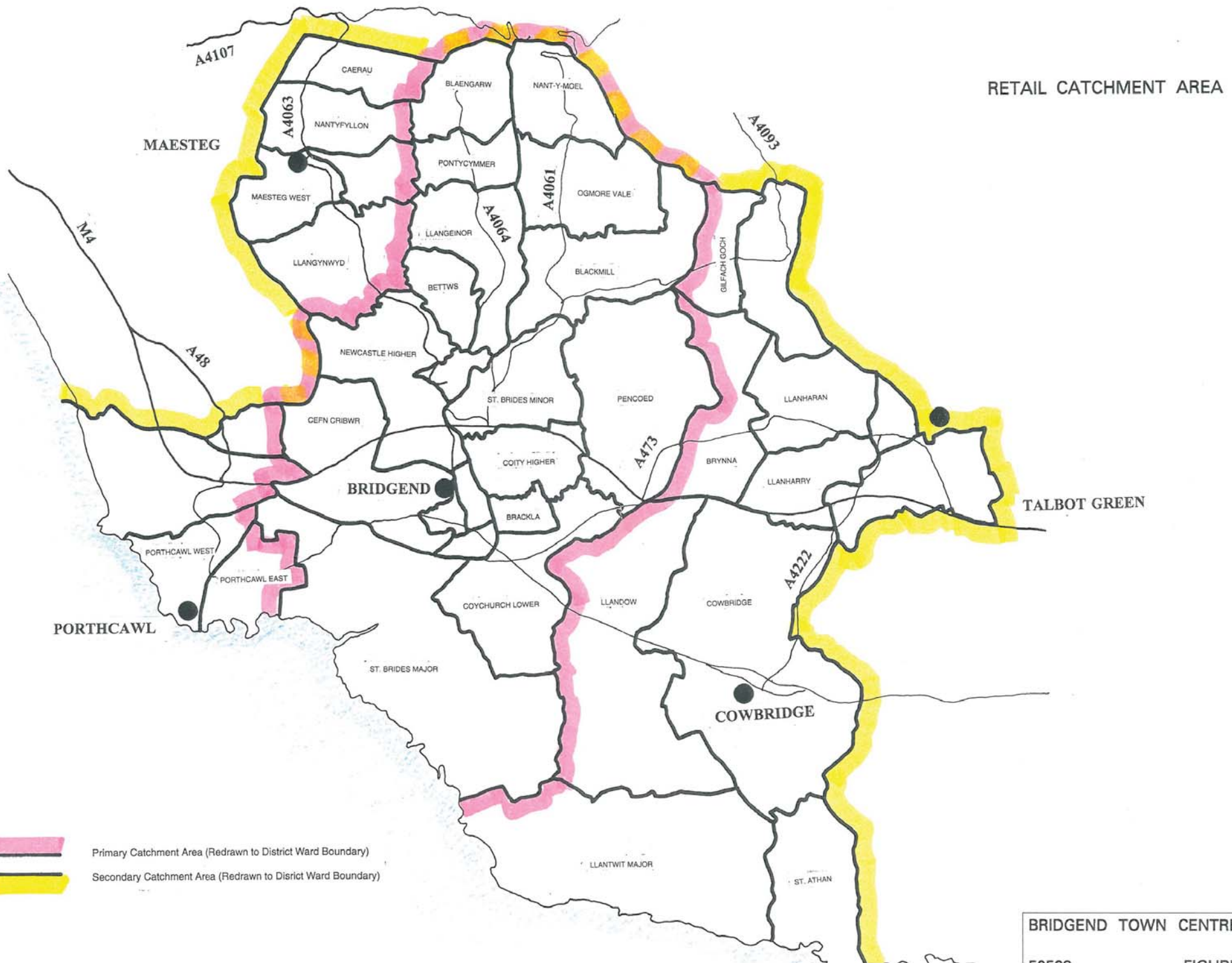


KEY

- PROPERTY COMPANY -
- PENSION FUND, ETC. -
- LOCAL INVESTOR -
- OWNER OCCUPIER -

Scale 1:1000

A GOAD PLAN FOR BRIDGEND (AUGUST 1994)
FORMS THE BASE FOR THIS DRAWING



UPPER FLOOR USES



KEY

- STORAGE - [Pink box]
- RETAIL - [Yellow box]
- OFFICES - [Green box]
- RESIDENTIAL - [Orange box]
- LEISURE - [Blue box]

BRIDGEND TOWN CENTRE STUDY

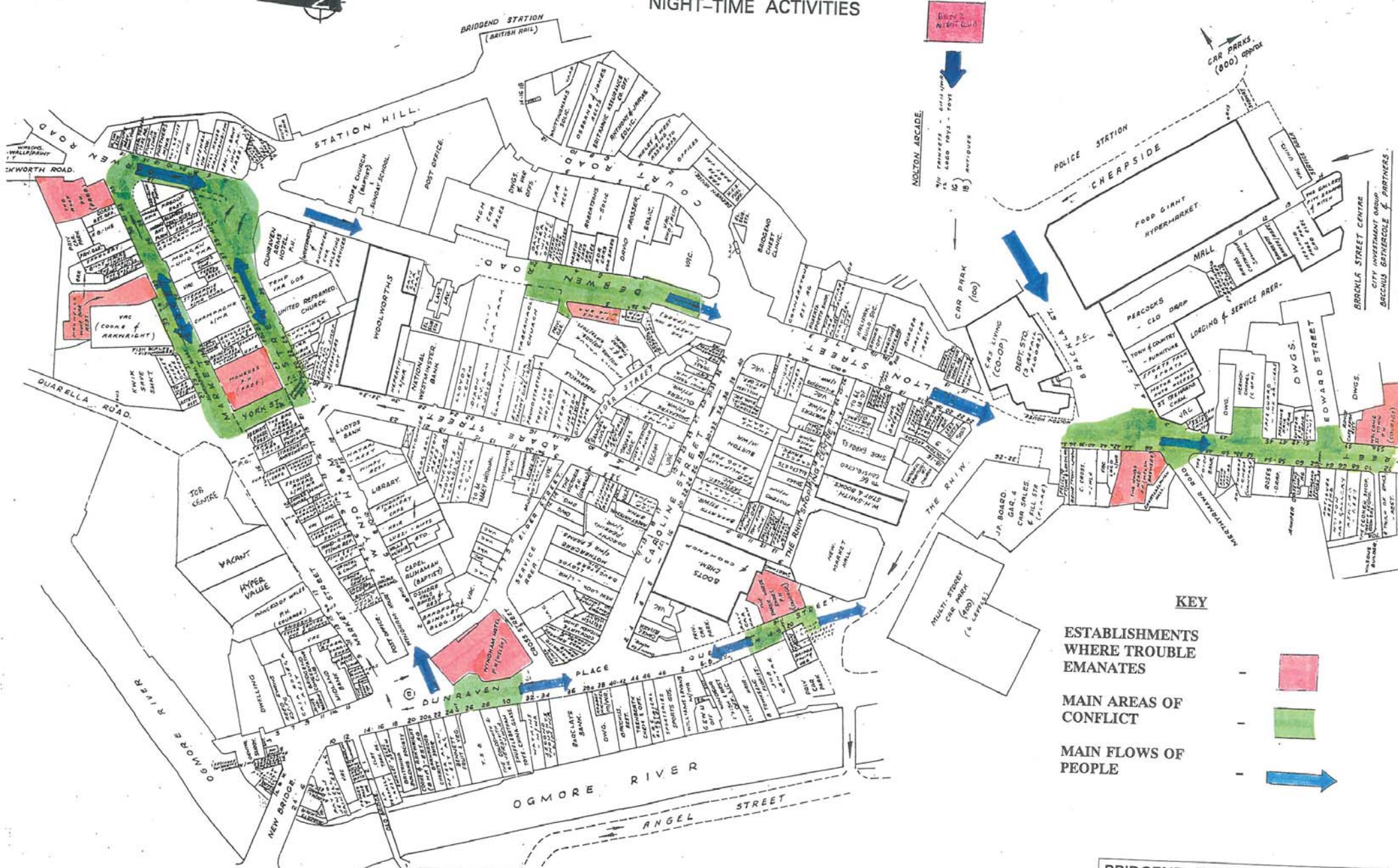
50528

FIGURE 3.4

A GOAD PLAN FOR BRIDGEND (AUGUST 1994)
FORMS THE BASE FOR THIS DRAWING



NIGHT-TIME ACTIVITIES



BRIDGEND NIGHT CLUB



MOLTON ARCADE
700 FRUIT & VEGETABLES
700 SWEETS
700 TOYS
700 BOOKS
700 RECORDS
700 MAGAZINES
700 GAMES
700 TOYS
700 RECORDS
700 MAGAZINES
700 GAMES

KEY

ESTABLISHMENTS WHERE TROUBLE EMANATES



MAIN AREAS OF CONFLICT



MAIN FLOWS OF PEOPLE



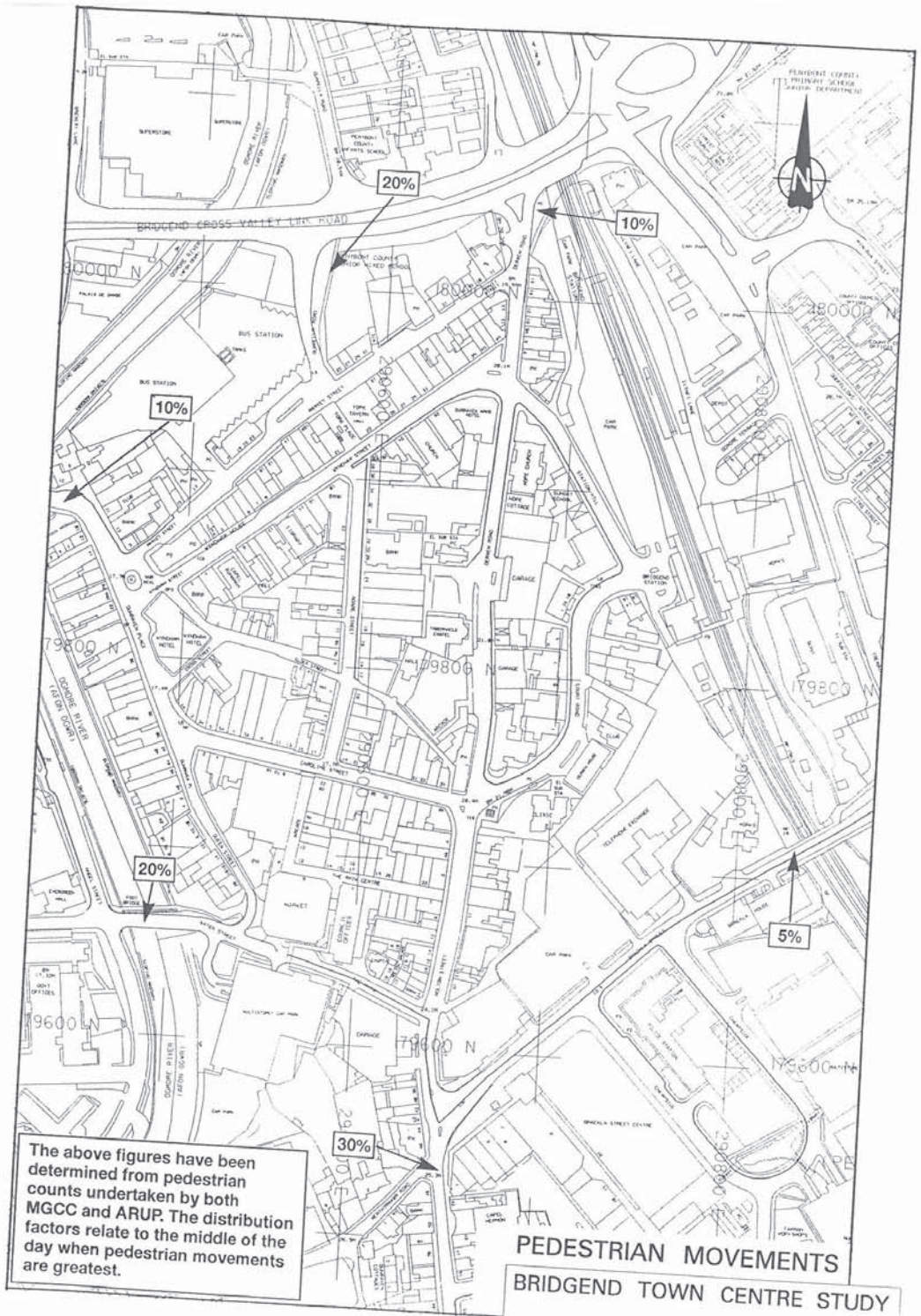
Scale 1:1000

A GOAD PLAN FOR BRIDGEND (AUGUST 1994)
FORMS THE BASE FOR THIS DRAWING

BRIDGEND TOWN CENTRE STUDY

50528

FIGURE 35



The above figures have been determined from pedestrian counts undertaken by both MGCC and ARUP. The distribution factors relate to the middle of the day when pedestrian movements are greatest.

PEDESTRIAN MOVEMENTS
BRIDGEND TOWN CENTRE STUDY
 50528 **FIGURE 4.1**



DELIVERY AREA USED AT OTHER TIMES FOR STAFF PARKING

BASEMENT DELIVERY AREA TO RHIW CENTRE

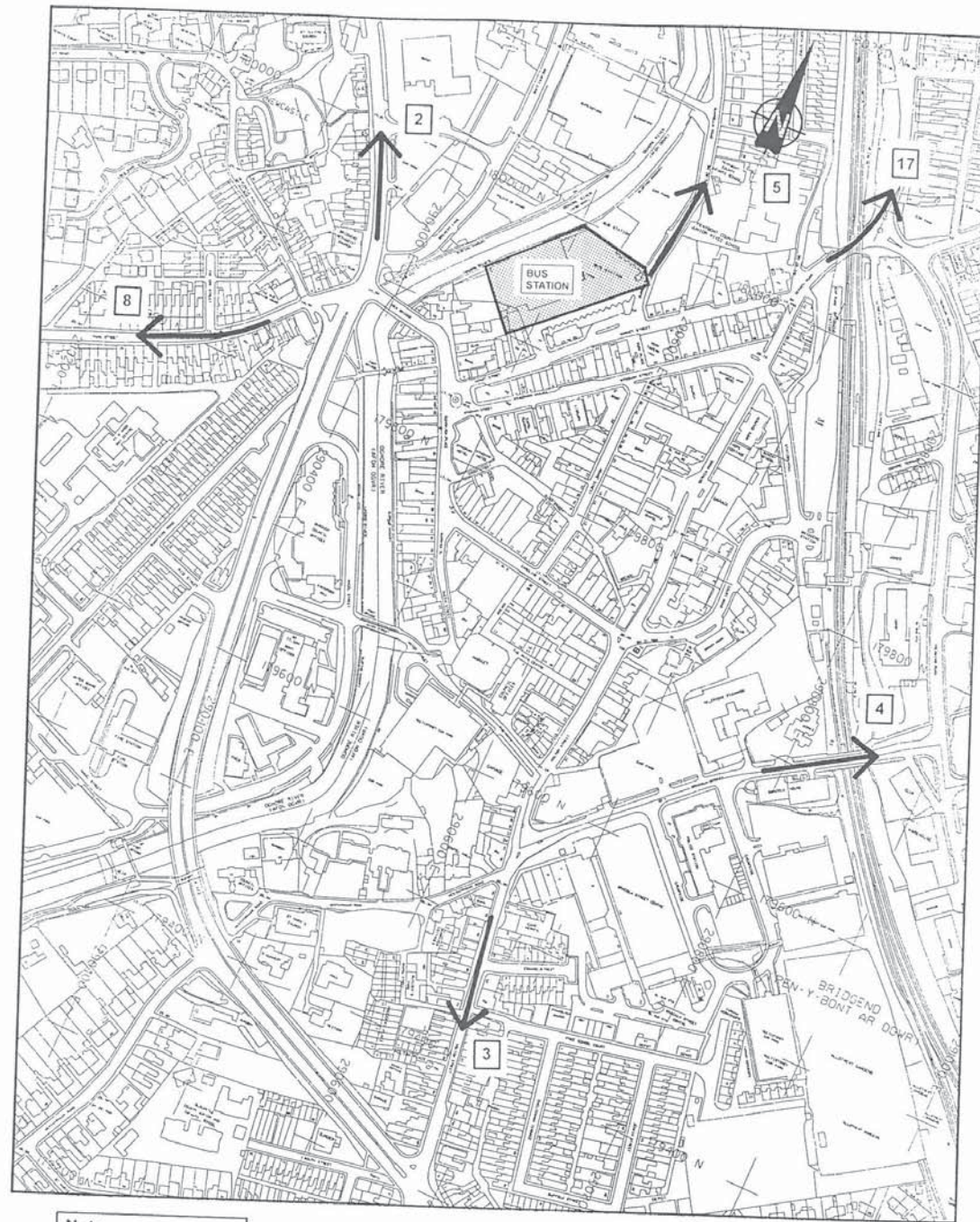
EXISTING TRAFFIC FEATURES

BRIDGEND TOWN CENTRE STUDY

NOT TO SCALE

50528

FIGURE 4.2



Note
 Existing bus services
 to Bridgend based on
 frequency per hour
 two way

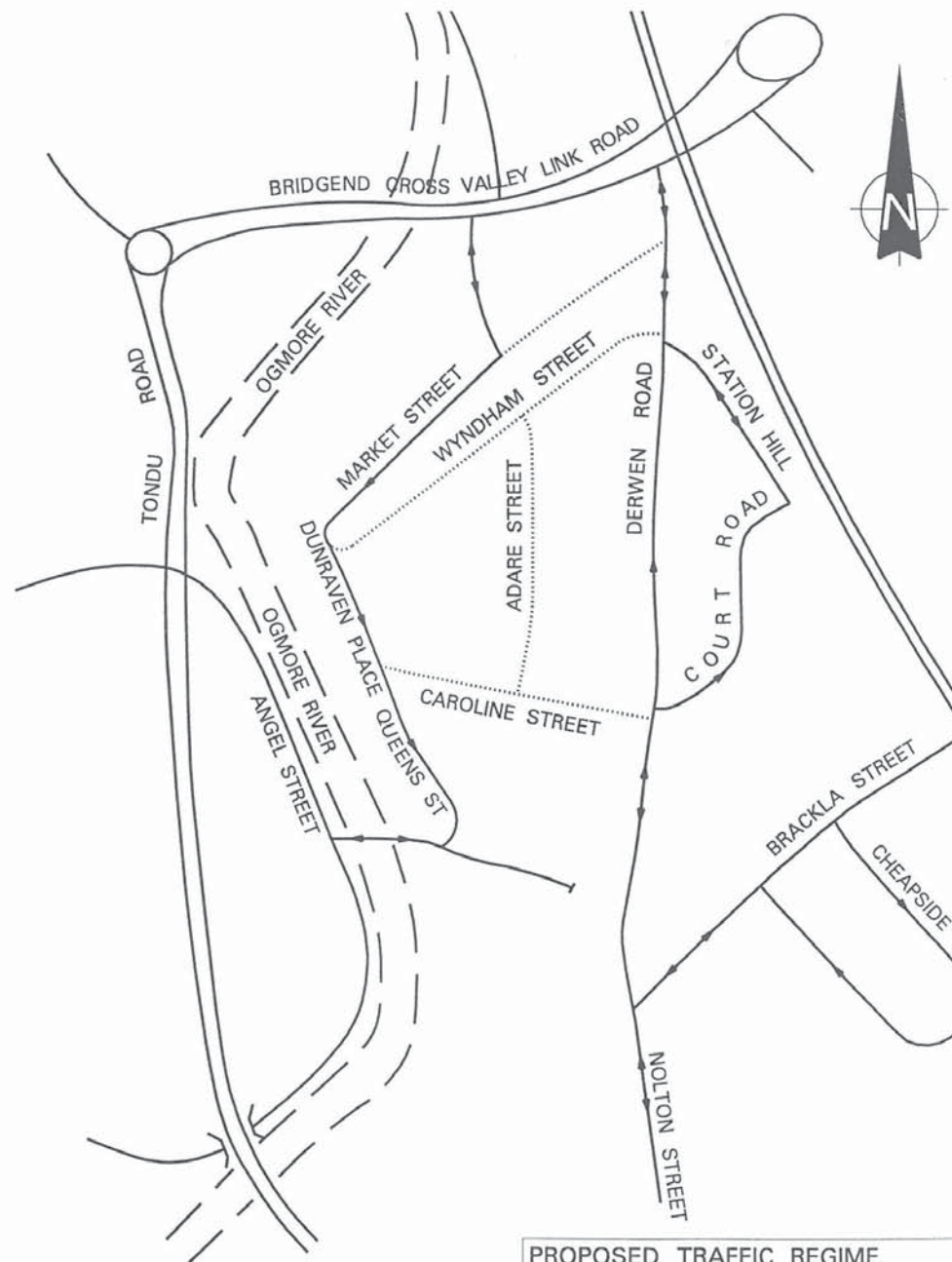
NOT TO SCALE

DISTRIBUTION OF
 BUS SERVICES

BRIDGEND TOWN CENTRE STUDY

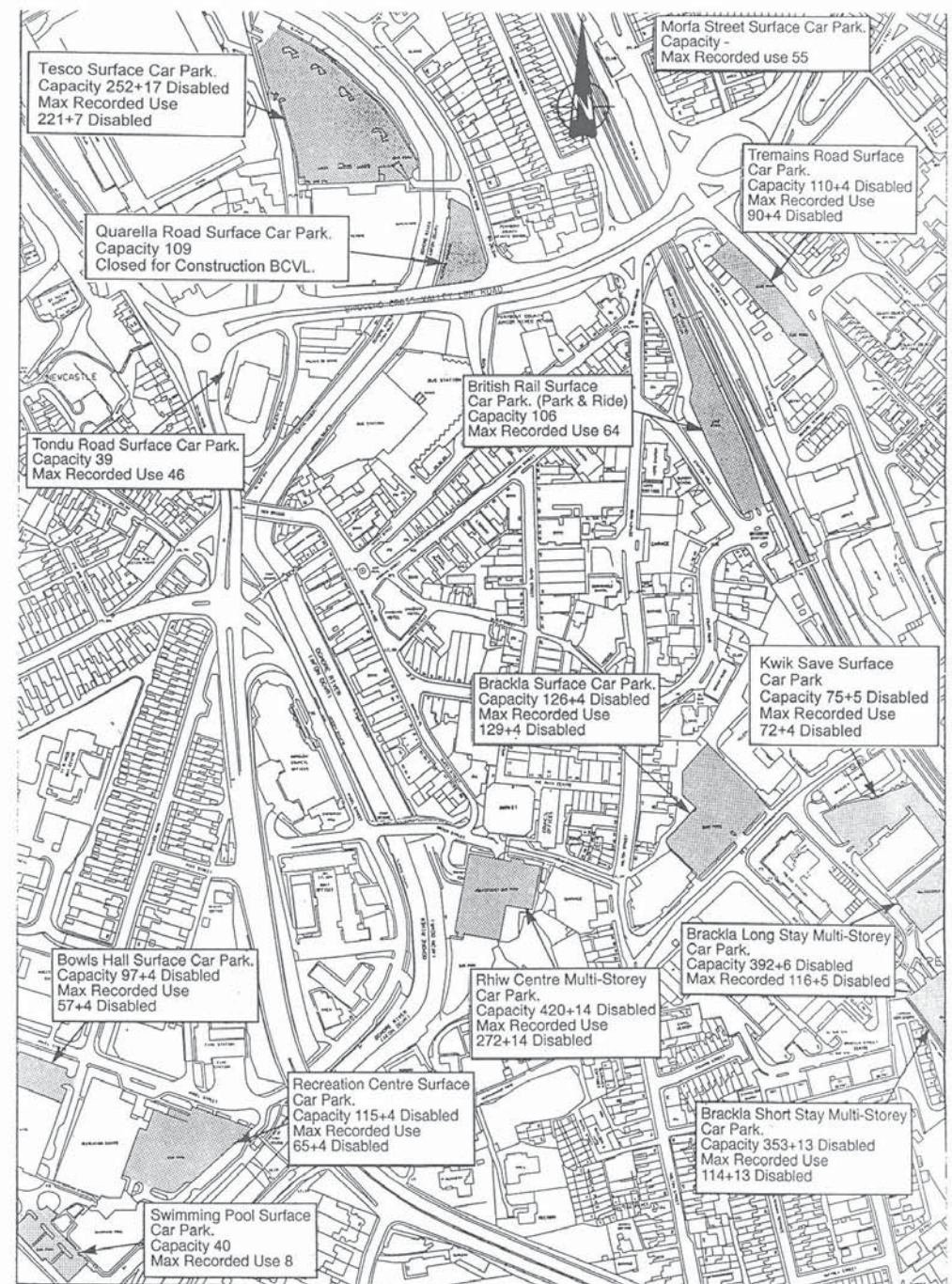
50528

FIGURE 4.3



PROPOSED TRAFFIC REGIME
 BRIDGEND TOWN CENTRE STUDY
 50528
 FIGURE 4.4

mart44.dgn



NOTE
 Car park survey undertaken
 on two occasions on
 Friday 3/11/95

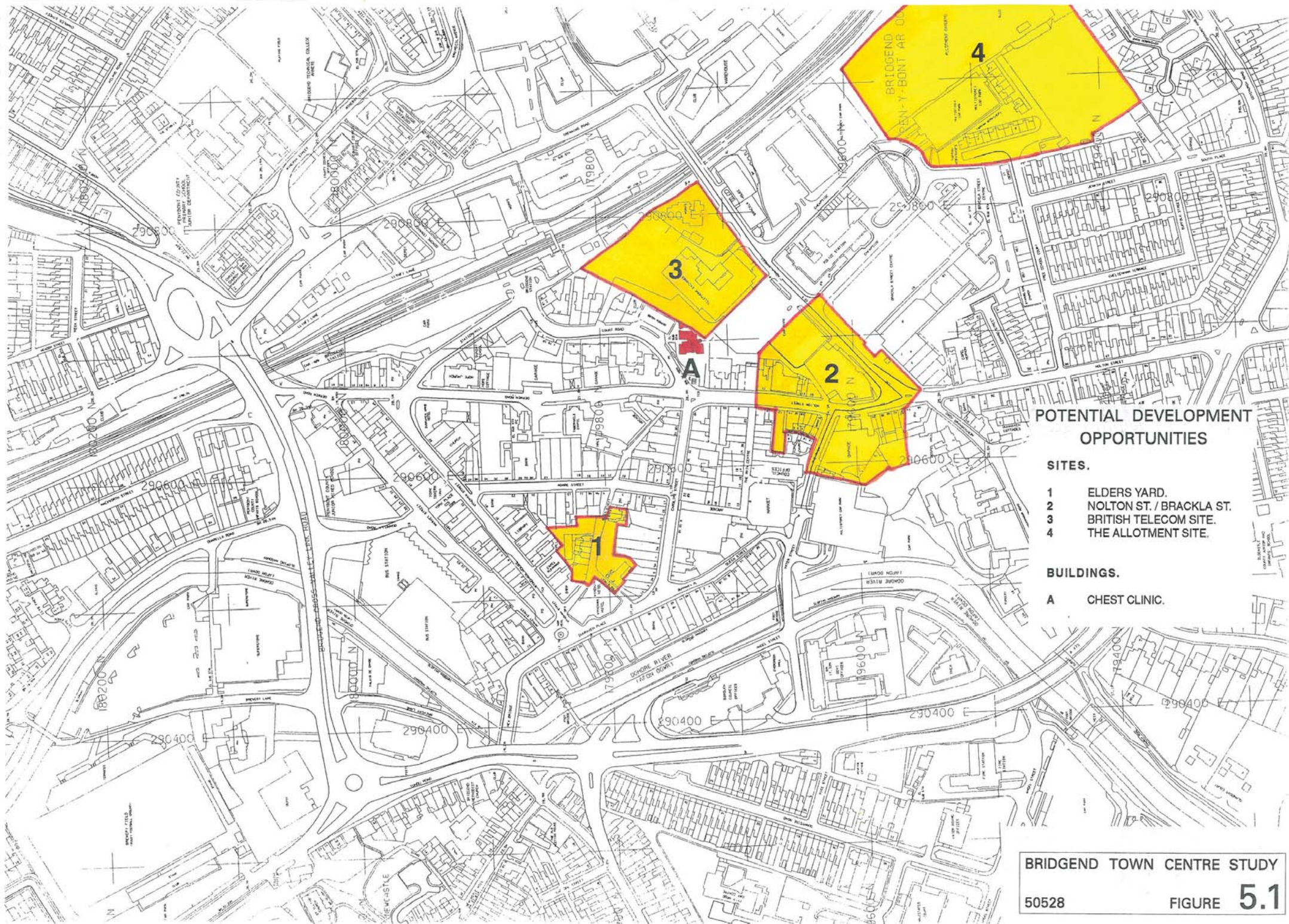
**OFF-STREET
 CAR PARKS**

BRIDGEND TOWN CENTRE STUDY

NOT TO SCALE

50528

FIGURE 4.5



POTENTIAL DEVELOPMENT OPPORTUNITIES

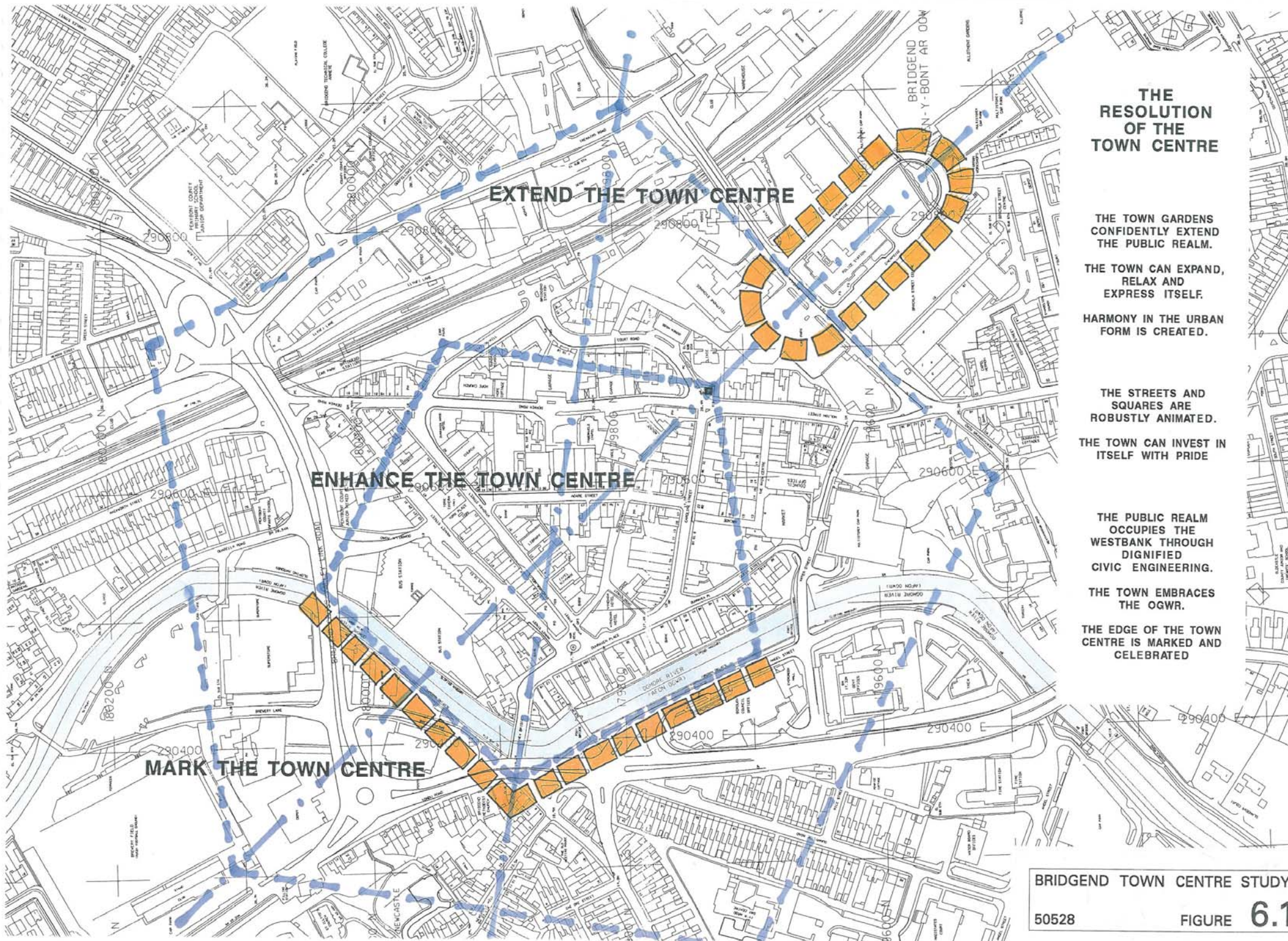
SITES.

- 1 ELDERS YARD.
- 2 NOLTON ST. / BRACKLA ST.
- 3 BRITISH TELECOM SITE.
- 4 THE ALLOTMENT SITE.

BUILDINGS.

- A CHEST CLINIC.

BRIDGEND TOWN CENTRE STUDY
 50528 **FIGURE 5.1**



**THE
RESOLUTION
OF THE
TOWN CENTRE**

THE TOWN GARDENS
CONFIDENTLY EXTEND
THE PUBLIC REALM.

THE TOWN CAN EXPAND,
RELAX AND
EXPRESS ITSELF.

HARMONY IN THE URBAN
FORM IS CREATED.

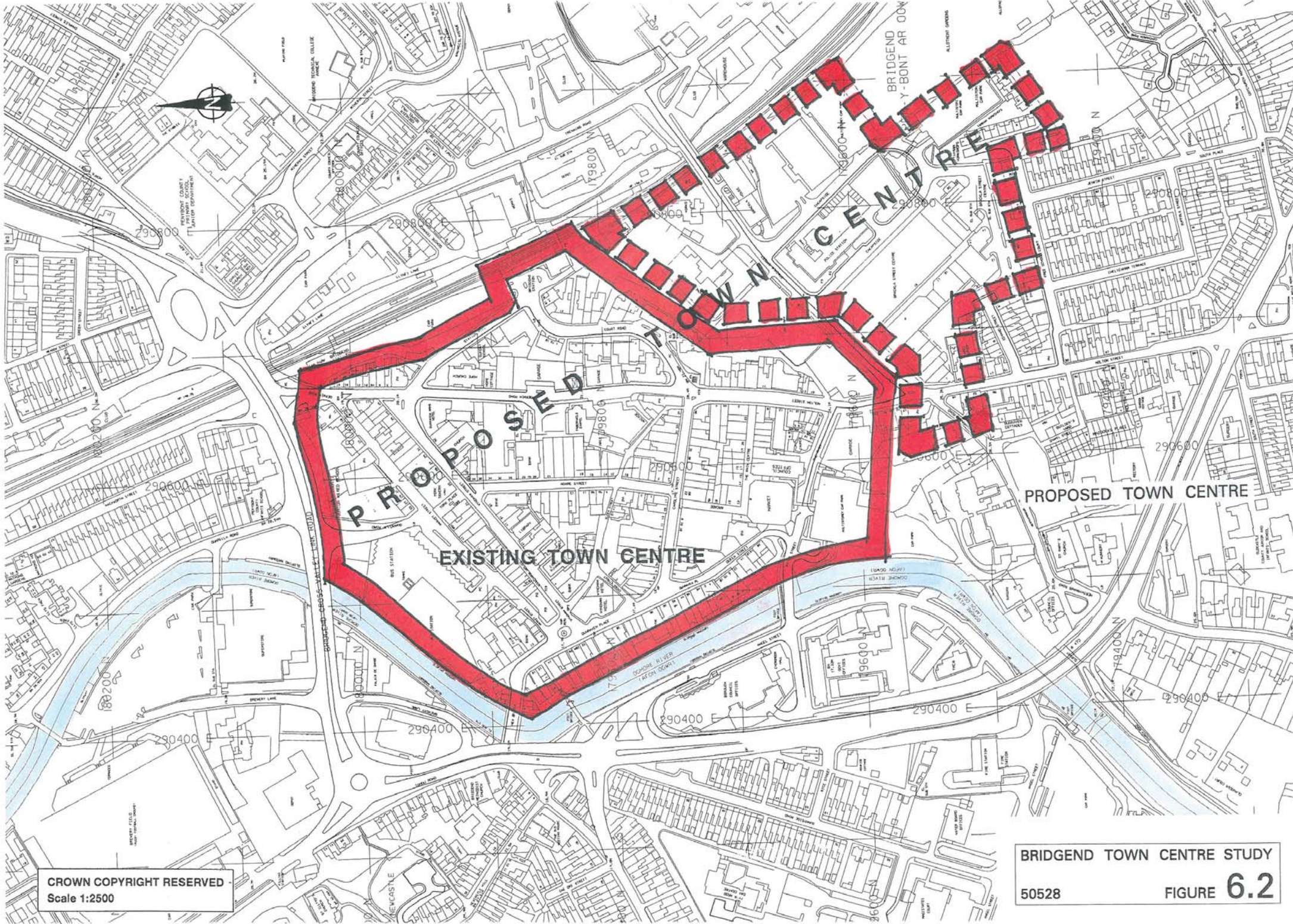
THE STREETS AND
SQUARES ARE
ROBUSTLY ANIMATED.

THE TOWN CAN INVEST IN
ITSELF WITH PRIDE

THE PUBLIC REALM
OCCUPIES THE
WESTBANK THROUGH
DIGNIFIED
CIVIC ENGINEERING.

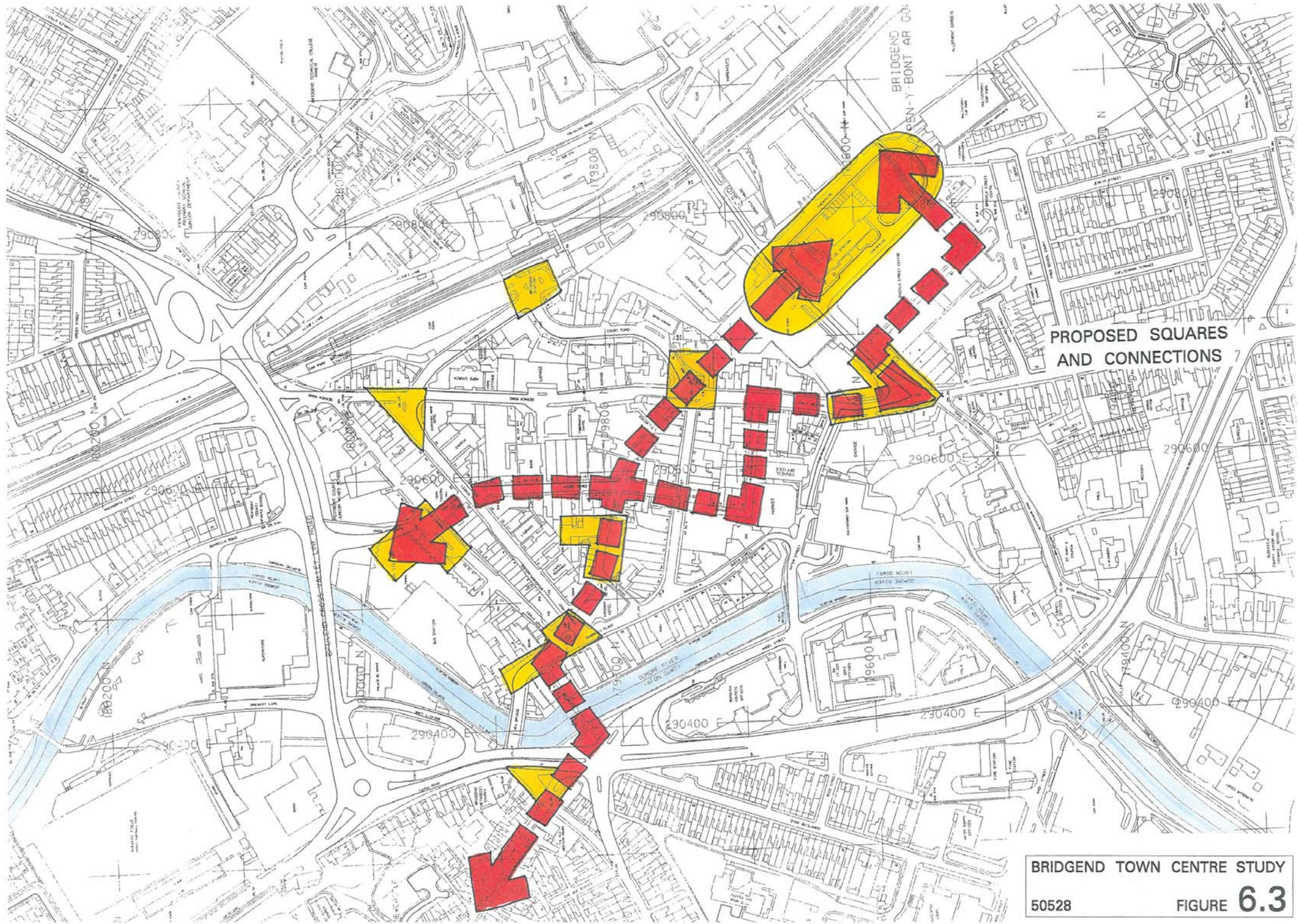
THE TOWN EMBRACES
THE OGWR.

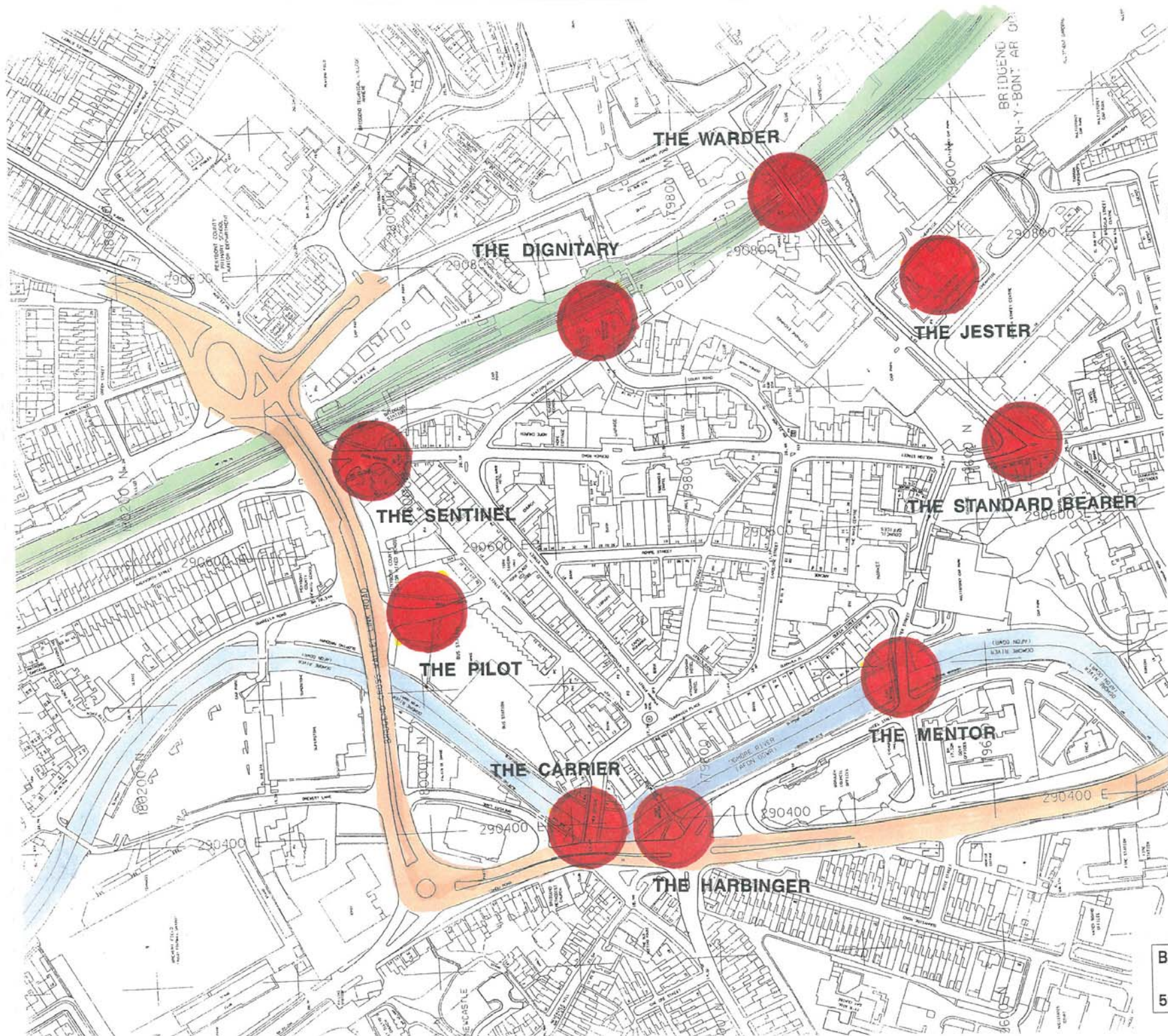
THE EDGE OF THE TOWN
CENTRE IS MARKED AND
CELEBRATED



CROWN COPYRIGHT RESERVED
Scale 1:2500

BRIDGEND TOWN CENTRE STUDY
50528
FIGURE 6.2





THE NINE SPONSORS OF BRIDGEND

THE HARBINGER
 Prophetic. Progressive. Persuasive.
 The Old Bridge.

THE CARRIER
 Bearer of burdens.
 Helper through weakness.
 The New Bridge.

THE PILOT
 Guiding. Knowledgeable.
 Quarella Road / Market Square.

THE SENTINEL
 Watchful. Protective.
 Derwen Road railway bridge

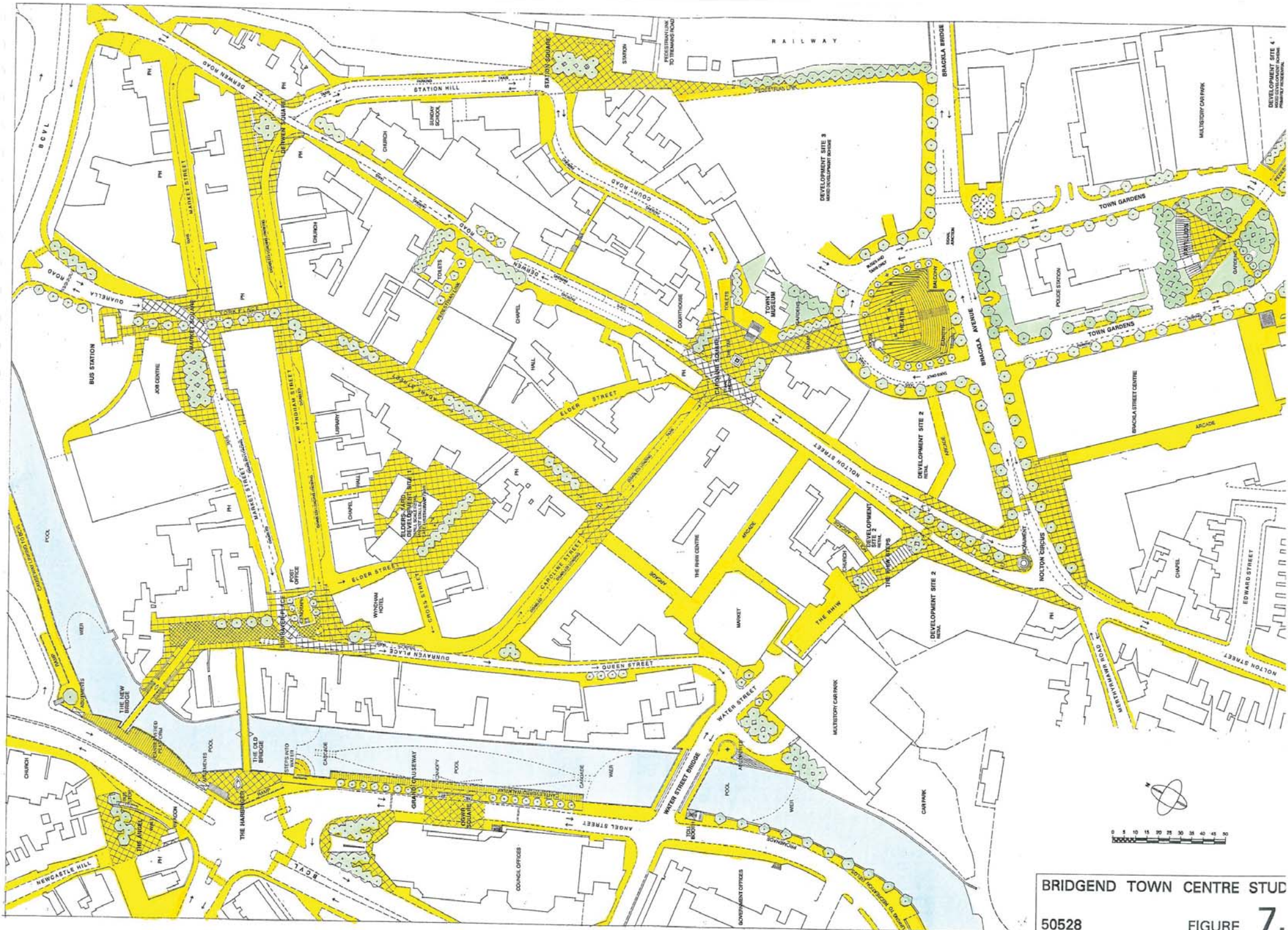
THE DIGNITARY
 Welcoming. Dignified. Influential.
 Station Square.

THE WARDER
 Responsible. Authoritative.
 Brackla Street Bridge.

THE STANDARD BEARER
 Inspirational. Upholder of values.
 Nolton Circus.

THE MENTOR
 Philosophical. Cultural. Wise.
 Water Street Bridge.

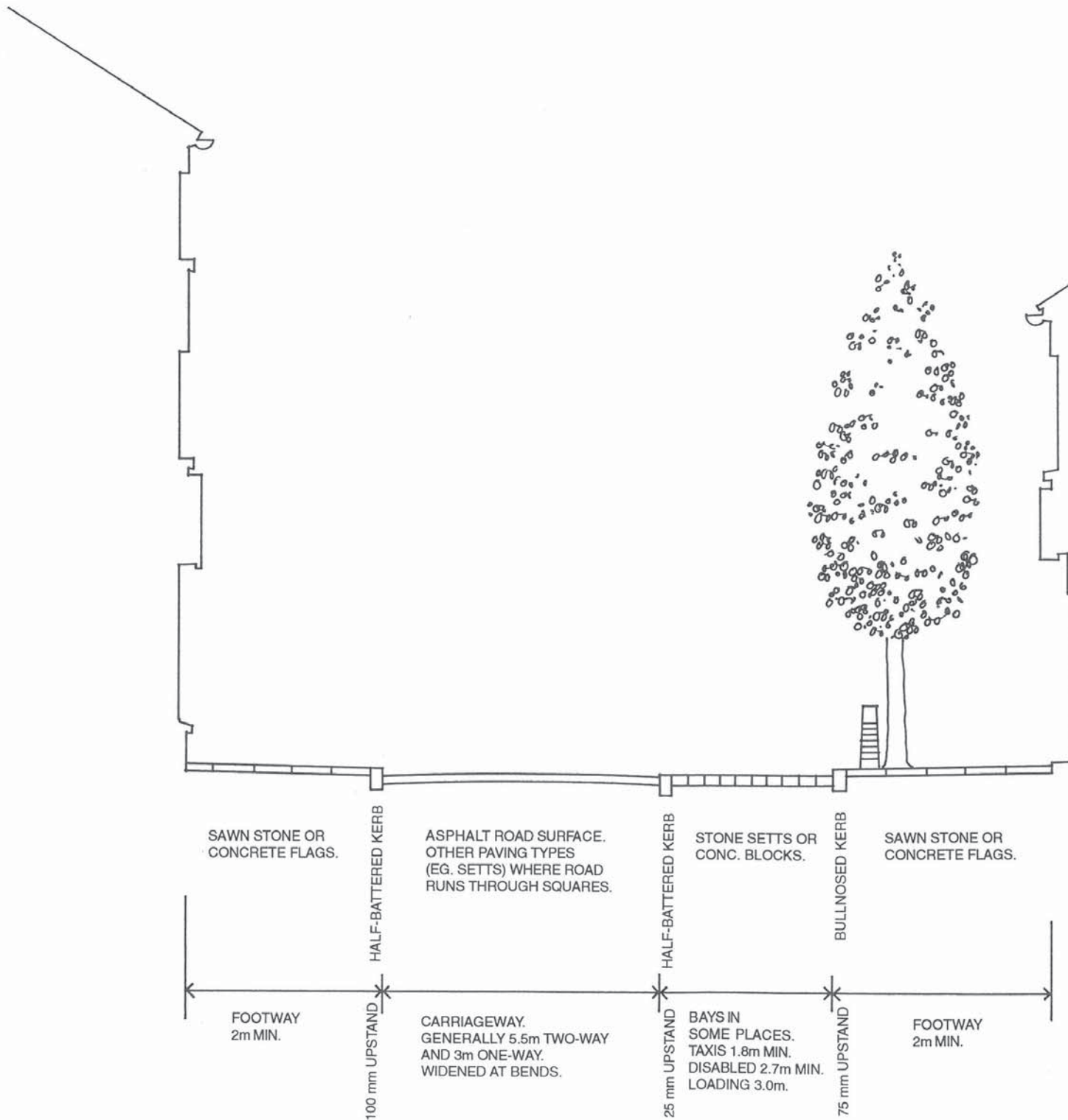
THE JESTER
 Domestic fun but
 a teller of home-truths.
 The Town Gardens.



BRIDGEND TOWN CENTRE STUD

50528

FIGURE 7.



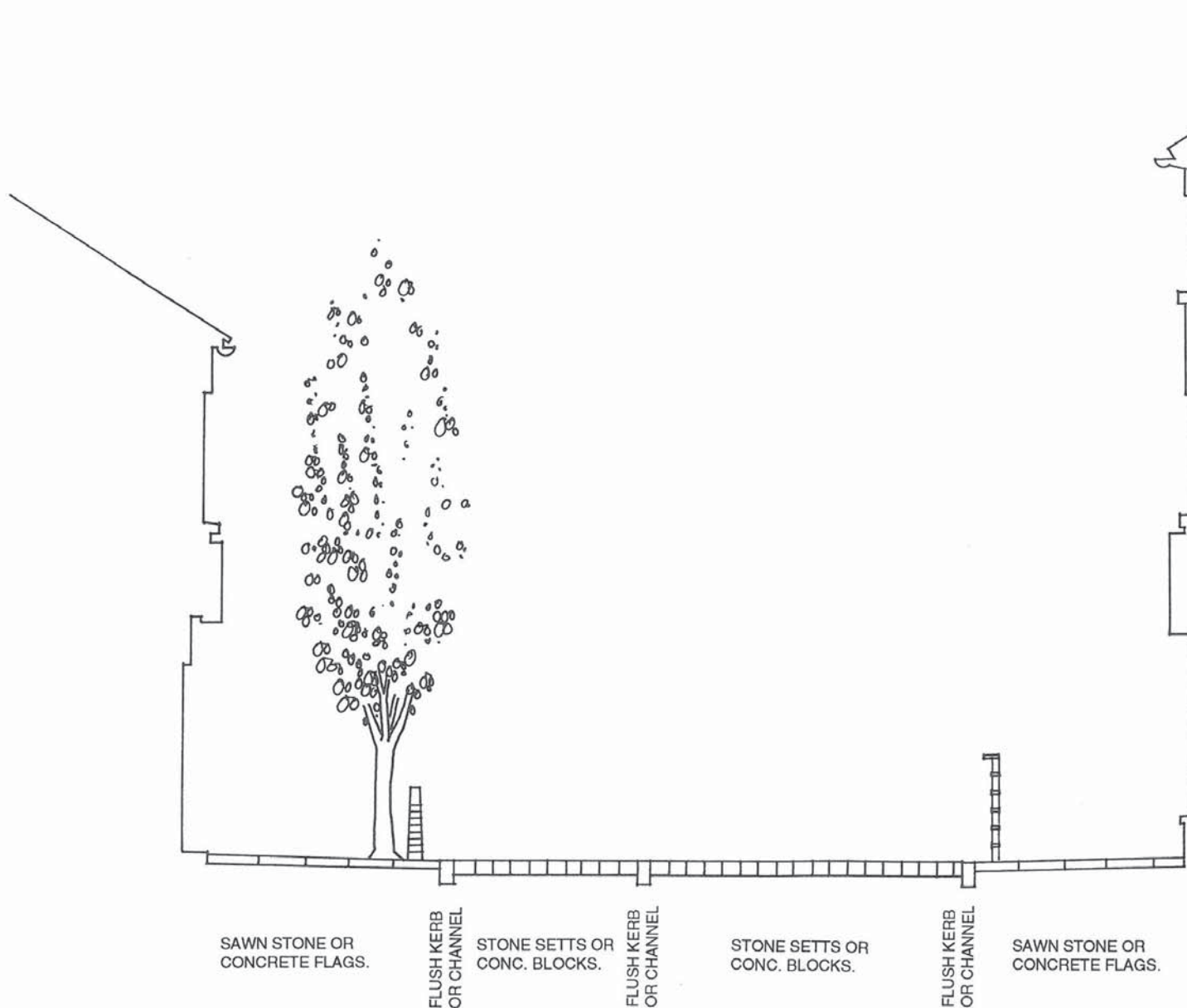
24 HOUR FREE ACCESS

TYPICAL SECTION THROUGH STREET

CARRIAGEWAY CLEARLY IDENTIFIABLE.
 FOOTWAYS DISTINCT AND SAFE WITH FURNITURE, TREES ETC. AS APPROPRIATE IF SPACE ALLOWS.

INCLUDES :-

- BRACKLA STREET
- CHEAPSIDE
- COURT ROAD
- DERWEN ROAD
- DUNRAVEN PLACE (SOUTH)
- MARKET STREET (WEST)
- NOLTON STREET
- QUEEN STREET
- STATION HILL
- WATER STREET



SAWN STONE OR
CONCRETE FLAGS.

FLUSH KERB
OR CHANNEL

STONE SETTS OR
CONC. BLOCKS.

FLUSH KERB
OR CHANNEL

STONE SETTS OR
CONC. BLOCKS.

FLUSH KERB
OR CHANNEL

SAWN STONE OR
CONCRETE FLAGS.



FOOTWAY
2m MIN.

BAYS IN
SOME PLACES.
TAXIS 1.8m MIN.
DISABLED 2.7m MIN.
LOADING 3.0m.

CARRIAGEWAY - ONE WAY.
GENERALLY 3m WIDE.
WIDENED AT BENDS.

FOOTWAY
2m MIN.

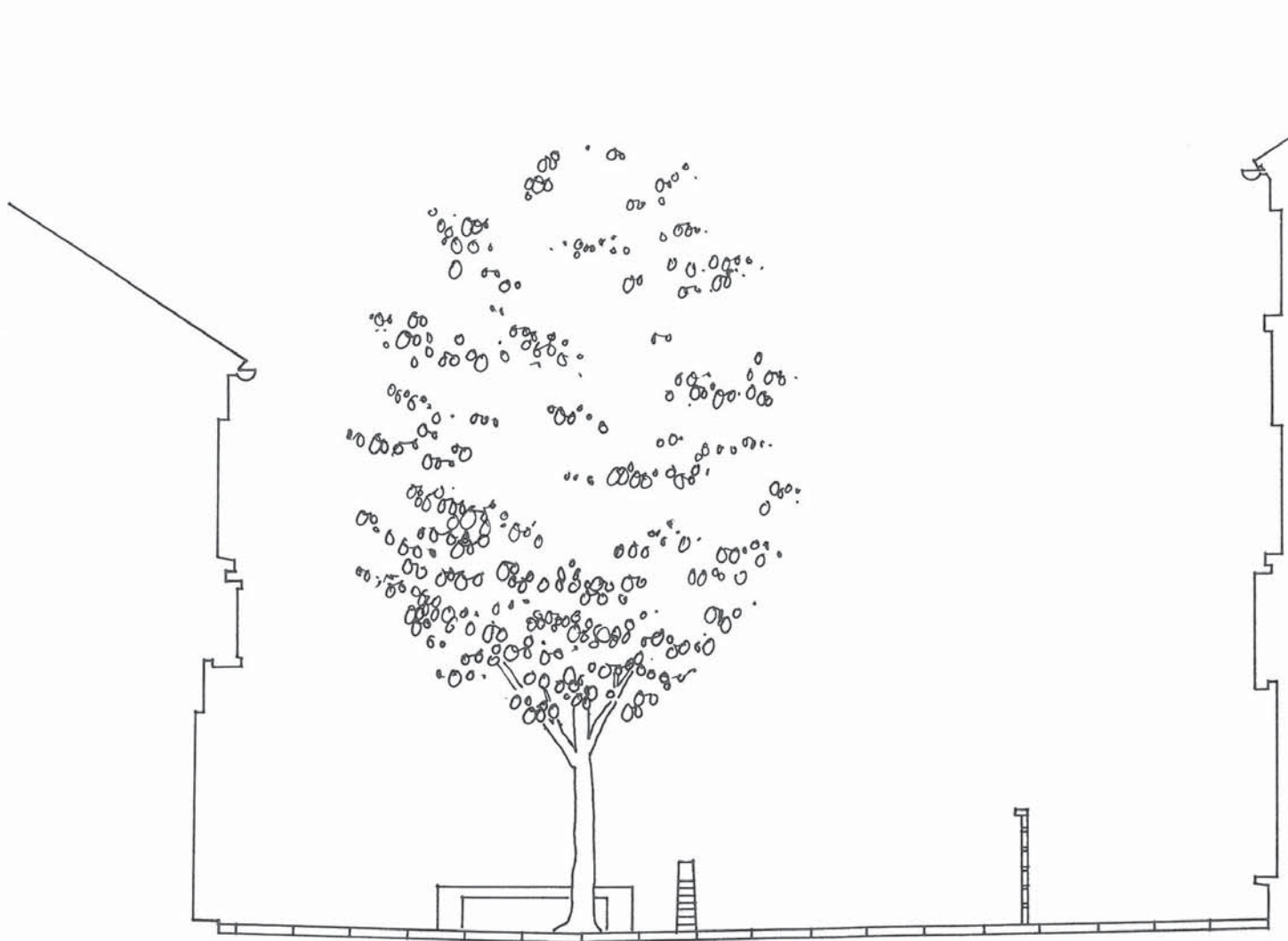
LIMITED FREE ACCESS

TYPICAL SECTION THROUGH STREET

FREE ACCESS LIMITED TO
EVENINGS / NIGHTTIME AND
SUNDAYS ONLY.
SERVICE ACCESS PROHIBITED
FROM EARLY MORNING
TO LATE AFTERNOON.
ALL VEHICLES PROHIBITED
DURING MAIN SHOPPING HOURS.

STREET DESIGNED FOR UNIMPEDED
PEDESTRIAN USE DURING
NORMAL SHOPPING AND WORKING HOURS
WITH FLUSH PAVING FOR
EASE OF MOBILITY.
VEHICLE ACCESS DURING LIMITED HOURS
DEFINED BY CONTRASTING FLUSH
KERBS / CHANNELS, PAVING VARIATION AND
POSITIONING OF FURNITURE, TREES ETC.

CAROLINE STREET
MARKET STREET (EAST)
WYNDHAM STREET



**LIMITED HOURS
SERVICE ACCESS ONLY**

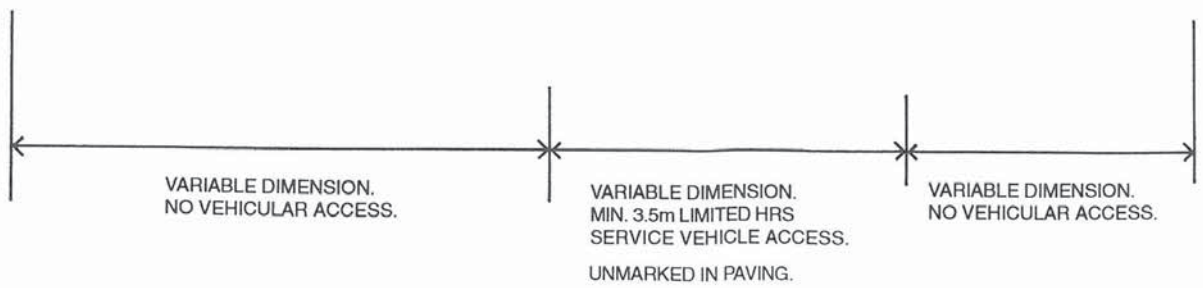
TYPICAL SECTION THROUGH STREET

SERVICE ACCESS PROHIBITED
FROM EARLY MORNING TO LATE
AFTERNOON.
ALL OTHER VEHICLES
PROHIBITED.

DESIGN OF STREET TO INCLUDE
FURNITURE, TREES, STEPS,
PAVING VARIATION ETC. AS
APPROPRIATE TO CREATE A SAFE,
SPACIOUS AND ATTRACTIVE
PEDESTRIAN ENVIRONMENT.
EXTENT OF LIMITED SERVICE
ACCESS CONTROLLED BY
PRESENCE OF BENCHES,
BOLLARDS, BALUSTRADES ETC.

ADARE STREET
CROSS STREET
DUNRAVEN PLACE (NORTH)
ELDER STREET
(WEST-NO ACCESS TO ADARE ST.)
THE RHIW (WEST)

SAWN STONE OR CONCRETE FLAGS WITH OTHER PAVING MATERIALS
AS APPROPRIATE TO DESIGN OF INDIVIDUAL STREET.





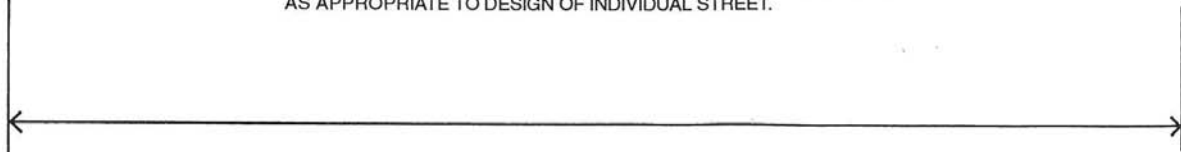
**ALL VEHICLES
PROHIBITED**

TYPICAL SECTION THROUGH STREET

STREET DESIGN DEDICATED TO
PEDESTRIAN ENVIRONMENT WITH
FURNITURE, TREES,
BALUSTRADES, STEPS,
PLATFORMS ETC. AS
APPROPRIATE WHERE SPACE
ALLOWS.

- ELDER STREET (EAST)
- ELDER STREET (WEST-PART ONLY)
- THE RHIW (EAST)
- YORK PLACE

SAWN STONE OR CONCRETE FLAGS WITH OTHER PAVING MATERIALS
AS APPROPRIATE TO DESIGN OF INDIVIDUAL STREET.



VARIABLE DIMENSION. PEDESTRIAN AREA - ALL VEHICLES PROHIBITED.

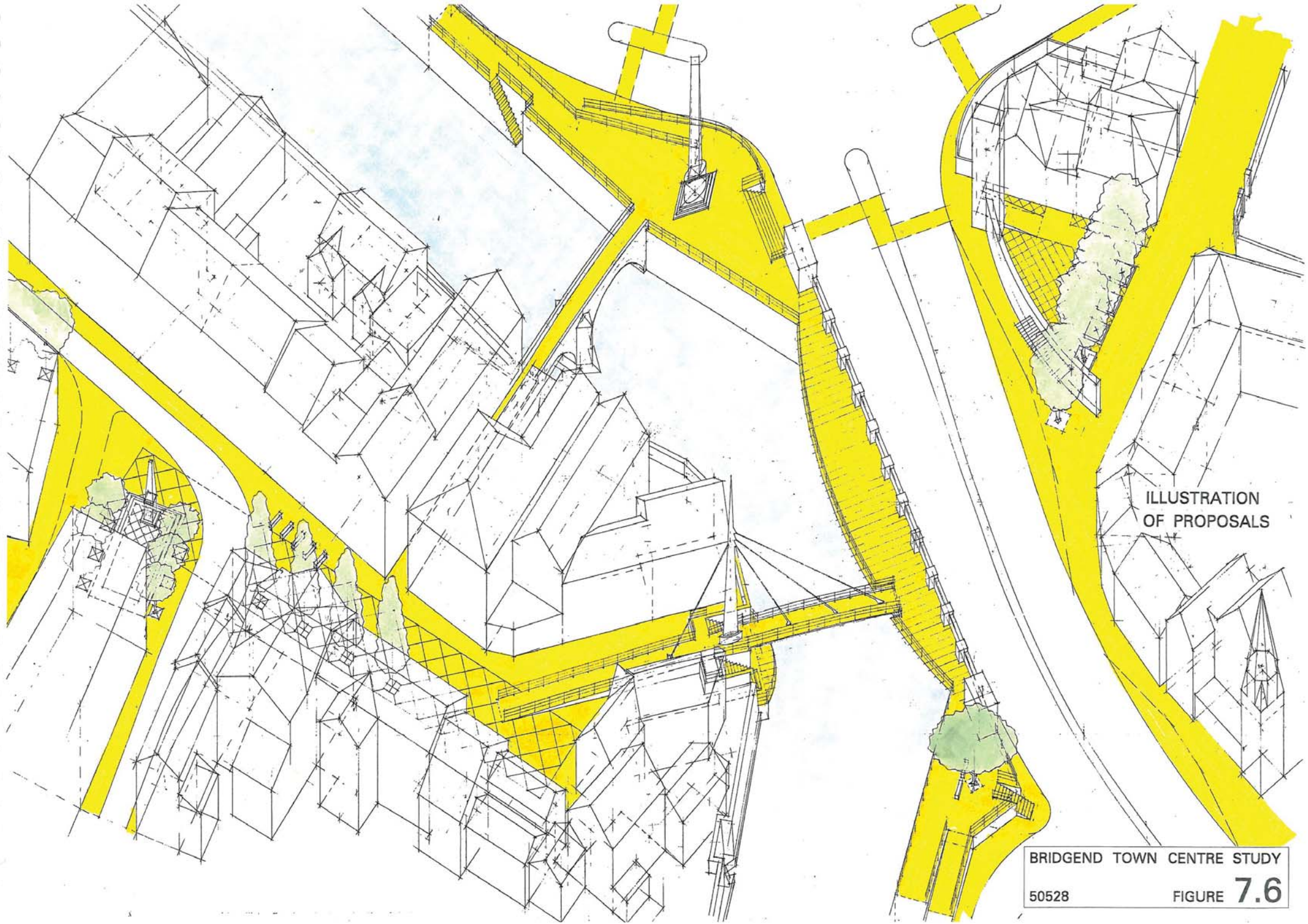
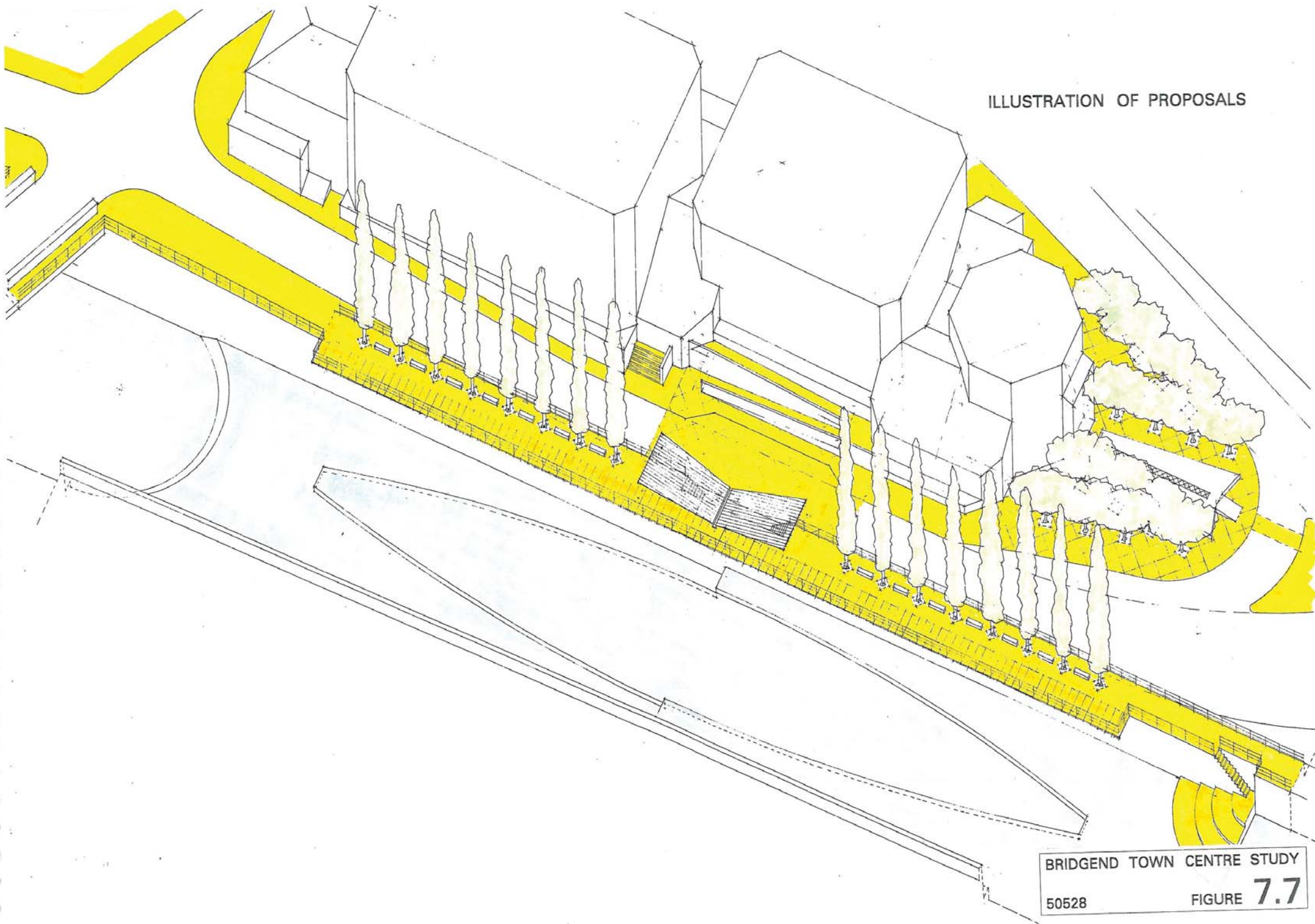


ILLUSTRATION
OF PROPOSALS

BRIDGEND TOWN CENTRE STUDY
50528
FIGURE 7.6

ILLUSTRATION OF PROPOSALS



BRIDGEND TOWN CENTRE STUDY

50528

FIGURE 7.7

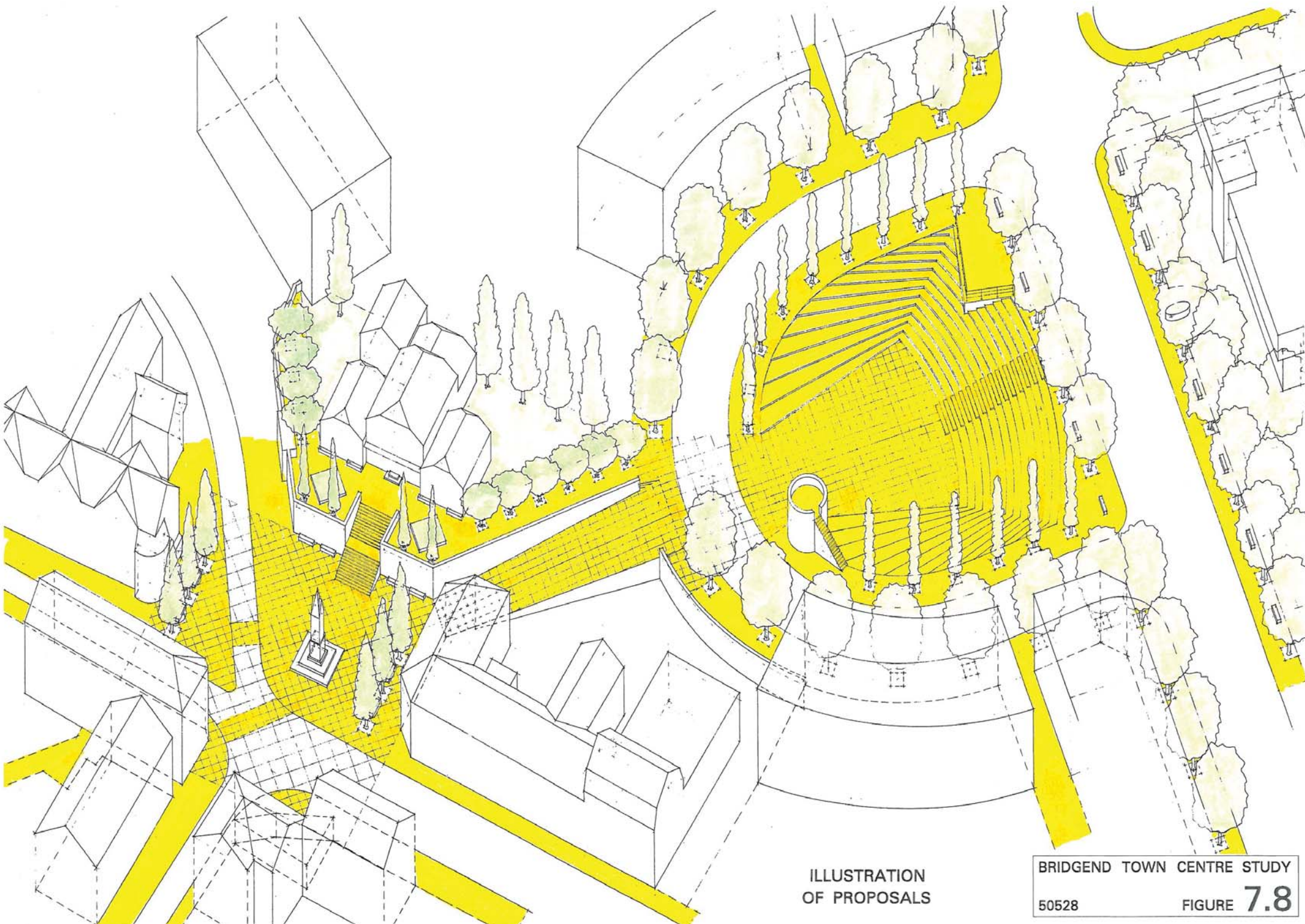
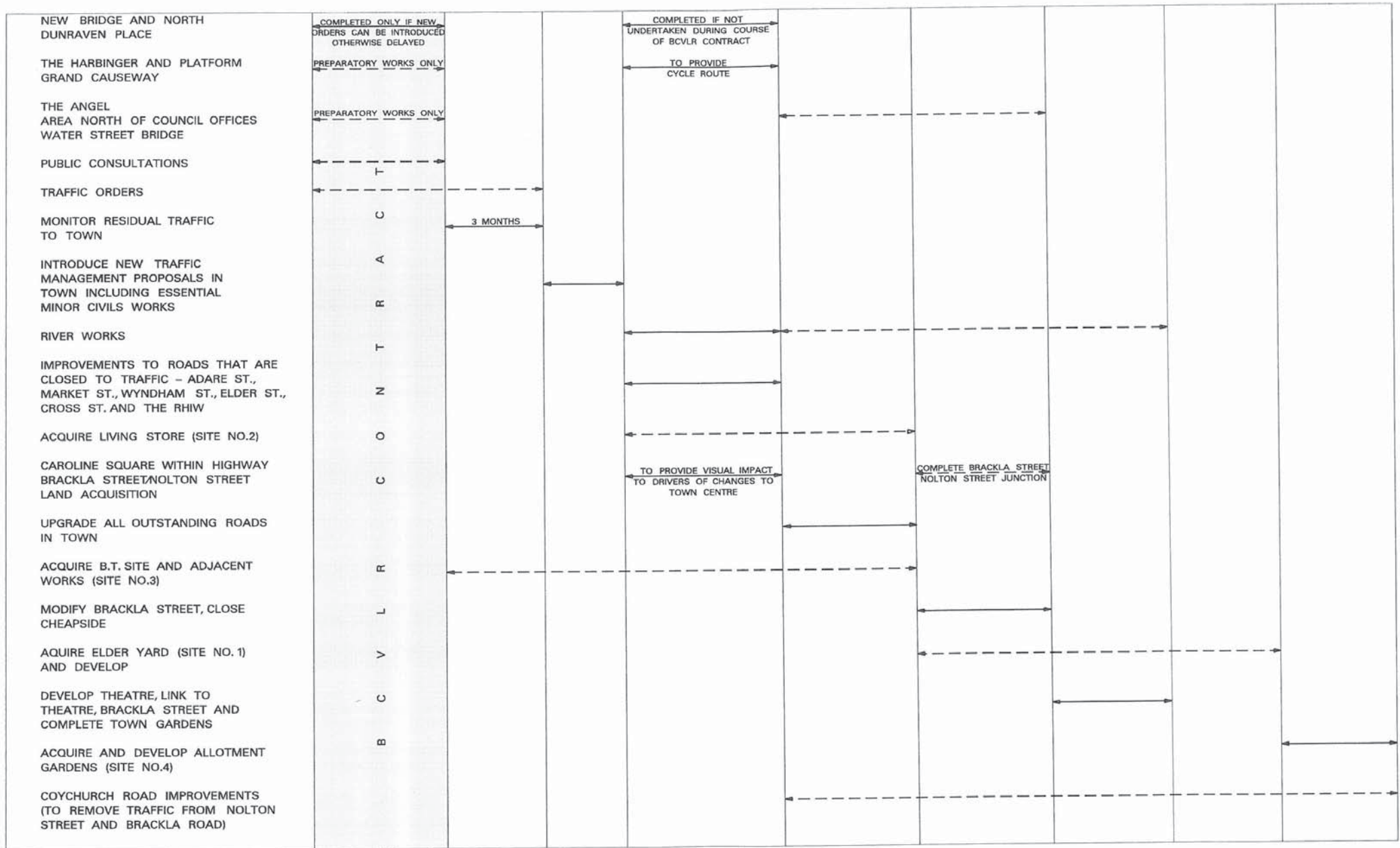


ILLUSTRATION
OF PROPOSALS



BRIDGEND TOWN CENTRE STUDY
 PHASING PROPOSALS
 50528
 FIGURE 8.1

brid1.dgn