

This document is also available in Welsh

Bridgend Community Safety Partnership

Pen-y-bont ar Ogwr
Mwy Diogel



Safer Bridgend

www.saferbridgend.org.uk

Community Safety Strategy

(10 June 2019)

***‘Supporting Communities in Bridgend County to Be Safe
and Cohesive’***



Background

The Bridgend Community Safety Partnership (CSP) was established in response to the Crime and Disorder Act 1998.

The partnership has a statutory responsibility to undertake annual reviews of crime and disorder in the County. The review then helps partners understand the nature of crime, anti-social behaviour and substance misuse in the area and develop a community safety strategy which details the actions that need to be taken to reduce these problems and identifies the resources required to make the actions effective.

Following the implementation of the Wellbeing of Future Generations Act 2015, the decision was taken by Bridgend Public Services Board (PSB) to embed the activities of the Bridgend CSP into its own assessment and planning activities and by making it a sub board of the PSB.

Supporting Communities in Bridgend to be safe and cohesive is included in the [Bridgend Wellbeing Plan](#) and is the overarching objective for Bridgend CSP.

CSP Statutory Members:

Bridgend County Borough Council

South Wales Police

Cwm Taf Morgannwg Health Board

National Probation Service

Wales Community Rehabilitation Company

South Wales Fire and Rescue Service

Western Bay Youth Justice and Early Intervention Service

CSP other members

South Wales Police and Crime Commissioner

Elected member for Community Safety

Cwm Taf Morgannwg Safeguarding Board

Public Health Wales

Registered Social Landlords

Department of Work and Pensions

Bridgend Association of Voluntary Organisations

Cwm Taf Morgannwg Area Planning Board

Western Bay Community Cohesion Group

Strategic Assessment of Local Need

Bridgend CSP used a number of sources to establish evidence of local needs

[Bridgend Assessment of Wellbeing](#)

Key findings include:

- Overall decrease in the incidences of crime and anti-social behaviour.
- Increase in the number of reported incidences of sexual offences and domestic violence.
- More than 8 in every 10 residents have a feeling of belonging to the local area, but more than a quarter worry that people from different backgrounds do not get on well together.
- Financial security is a key pressure for those on low incomes, on low paid temporary contracts, or unemployed.
- People say they are concerned about the lack of employment opportunities locally for young people.

The Bridgend assessment of wellbeing also identified a number of challenges affecting Bridgend County now and in the future.

- An increase in population will mean a larger, more diverse and older population which will bring challenges for health and social care, housing, community resilience, age friendly communities and social isolation.
- One in four adults in Wales are likely to experience mental ill health.
- Economic changes including the ability to meet the changing skills needs of the people of Bridgend.
- Further reforms to the Welfare System
- Climate change including air quality and risk from flooding.

[Western Bay Population Needs Assessment](#)

Following the introduction of the Social Services and Wellbeing Act a joint population needs assessment was carried out by the 3 local authorities and the local health board. Violence Against Women, Domestic Abuse and Sexual Abuse is a key theme of the assessment.

Bridgend VAWDASV Needs Assessment

In 2019 an external consultant was appointed to undertake a needs assessment of VAWDASV services in Bridgend. The findings from this assessment will be used to inform future service delivery.

[Public Health Wales Adverse Childhood Experiences](#)

Bridgend CSP recognise the impact Adverse Childhood Experiences have on health and wellbeing across the life course.

The CSP will use the quarterly Public Health Wales Violence Surveillance Report to monitor and respond to levels of violence within the county

Links to National and Regional Priorities and Plans

[South Wales Police and Crime Reduction Plan 2019 to 2023](#)

Priorities

- ✓ Reduce and prevent crime and anti-social behaviour to keep people safe and confident in their home and communities
- ✓ Improve the way we connect with, involve and inform our communities
- ✓ Work to protect the most vulnerable in our communities
- ✓ Make sure that the local criminal justice system works effectively and efficiently, meeting the needs of victims and challenging offenders
- ✓ Make our contribution to the strategic policing requirement and successfully police major events
- ✓ Spend your money wisely to protect policing your community

[Welsh Government's National Strategy on Violence against Women, Domestic Abuse and Sexual Violence 2016 - 2021](#)

Objectives

- ❖ Increase awareness and challenge attitudes of VAWDASV
- ❖ Increased awareness in children and young people of the importance of safe, equal and health relationships and that abusive behaviour is always wrong
- ❖ Increased focus on holding perpetrators to account and provide opportunities to changes their behaviour based around victim safety
- ❖ Make early intervention and prevention a priority
- ❖ Relevant professionals are trained to provide timely and appropriate responses to victims
- ❖ Provide victims with equal access to appropriate resources, high quality, needs led, strength based, gender responsive services
- ❖ Provide robust evidence to inform our work

[National Assembly for Wales Suicide Prevention](#)

Bridgend PSB has developed a Suicide and Self Harm Prevention Strategy and has agreed that the Community Safety Partnership will take ownership of the strategy and measure progress.

[Working together for Safer Communities](#)

- ❖ In December 2017 the Welsh Government published their review of Community Safety Partnership Working in Wales. The review identified a Vision for Community Safety
- ❖ Every community is strong, safe and confident in a manner that provides equality of opportunity and social justice, resilience and sustainability for all
- ❖ The shared responsibility of government, public and third sector agencies is to work together with the communities the service and the private sector to

address activity or behaviour that is unlawful, anti-social, harmful to individuals and society and to the environment

- ❖ Sharing knowledge and ensuring early intervention with prompt, positive action tackles local issues and addresses vulnerabilities

This vision will be achieved through collaborative and integrated multi-agency activity that is:

- Evidence-based and intelligence-led
- Supported by appropriate skills and knowledge
- Sustainably resourced and locally appropriate
- Engaging and involving citizens
- Preventative and intervening as early as possible
- Focused on long-term improvements and benefit

Regionalisation

Bridgend CSP will have to consider regionalisation when reviewing the Community Safety Strategy. The change to the Health Board footprint will have a significant impact on the work of the partnership. Bridgend CSP will continue to work across the region to collaborate with health and other agencies.

Wellbeing Objective: Support communities in Bridgend County to be safe and cohesive.



Why is this important?

In Bridgend County the strength of our social wellbeing comes from our communities. In our assessment people in Bridgend County told us they feel that contact with neighbours, friends and family helps them live a full life and deal with life's challenges. They say they value the environment, culture and heritage of the area.

Attractive communities where people get on well with each other can reduce the prevalence of crime, violence, and anti-social behaviour; improve educational attainment, and support health and wellbeing. Being active in our communities offers us the opportunity to keep healthy, enjoy our environment, maintain social networks and embrace our culture and language. We know that in the future people will live in smaller households and that our communities will be more diverse. In consultation, citizens felt that it was particularly important to challenge discrimination in communities. The British Crime survey finds that in the UK disabled people have an increased risk of being victims of violence.

Although crime and anti-social behaviour rates are low in the Bridgend County and decreasing, people still believe that there is a problem. Most residents surveyed said they do not feel informed about what the police and others are doing to tackle local issues. In consultation, citizens felt that communities have an important role to play in addressing crime and antisocial behaviour. They would like to have more opportunities to talk about issues important to them and their communities freely.

We know that working together works. For example, since 2007-08, the number of young people offending for the first time has decreased and this is largely due to partner agencies working together with young people to provide early interventions. The risk factors for youth offending and substance misuse within the family, community, school overlap to a very large degree with those for educational underachievement, young parenthood, and adolescent mental health problems. Actions to prevent these risk factors therefore helps to prevent a range of negative outcomes for young people, families and communities now and in the future.

Whilst not as prevalent in Bridgend County as in some other areas, violence, substance misuse and in particular domestic violence have a devastating impact on individuals, their families and undermine confidence in communities, both geographical and other communities. Young people in our workshop were particularly concerned about substance misuse.

Our wellbeing assessment found that there has been an increase in reporting of sexual offences and domestic violence. Whilst this increased reporting may partly be due to increased trust in Police and other services it is still likely that many victims do not seek help. We see the link to adverse childhood experiences and want to prevent a cycle of such behaviour in future generations.

What will we do?

Our 10 year aim is for people living, working or visiting Bridgend County to feel safe and be safe

We have defined two priority areas for this objective for the next five years.

1. *We will work together to create safe, confident communities and tackle crime, disorder and all aspects of anti-social behaviour*

We have seen the benefit that working together can have in preventing crime and we will use this experience to continue to change the way we work together to address future challenges in our communities.

The steps we will take:

- We will collect and analyse information, data and intelligence to focus on crime, in particular, violence and substance misuse and its impact on citizens and all kinds of communities.
- We will work with neighbouring local authorities to implement the **Violence against Women, Domestic Abuse & Sexual Violence Strategy**.
- We will use our understanding of how for some people childhood experiences affects offending behaviour to extend the way we work together to prevent reoffending.

Focus for 2019 – 2020

- ❖ Divert young and vulnerable people from anti-social behaviour and offending
- ❖ Reduce the negative impact of drug and alcohol misuse on individuals and communities
- ❖ Tackle Violence against women, domestic abuse and sexual violence

2. *We will work together to improve community cohesion so that people in communities get on well together and differences are respected and tolerated*

We want to understand and address the things that damage a person's sense of security and belonging to their community. Whilst we have mechanisms in place to deal with those tensions that place communities at significant risk, we want to ensure that all local people benefit from the supportive communities that our citizens are so proud of.

The steps we will take:

- We will work with all members of our communities, in particular equality groups such as disabled people and the LGBT community, to better understand what causes tensions.
- We will use this learning to ensure there are communication and other mechanisms in place so that communities feel informed and we can identify and address issues and prevent escalation.
- We will work with communities to help them improve the local environment and increase opportunities to come together to promote a sense of ownership and security.

Focus for 2019 – 2020

- ❖ Promote community cohesion
- ❖ Reduce environmental crime
- ❖ Protect vulnerable groups from harm and victimisations

Meeting this well-being objective will contribute to the well-being goals as described below:

✓ A Prosperous Wales	Improve future outcomes for young people including educational attainment, cohesive safe communities are more attractive and easier places to do business.
✓ A Resilient Wales	Communities place a greater value on their environment and more people get involved in local issues and recognise the importance of green space in wellbeing and as a prevention factor.
✓ A Healthier Wales	Reduction in substance misuse. Promotes more involvement in communities to benefit mental health, social and physical activity.
✓ A More Equal Wales	Recognising that communities are becoming more diverse. Addressing barriers that some groups have in feeling part of communities.
✓ A Wales of Cohesive Communities	Primary aim of this objective.
✓ A Wales of Vibrant Culture and Thriving Welsh Language	Importance of culture and language as a focus for communities coming together. Bringing more people from different cultures together. More people identifying with their community.
✓ A Globally Responsible Wales	Diverse, confident communities are resilient to change. Promotes a better knowledge of different cultures and a better knowledge of the local environment.

How are these steps linked to the other objectives in the Bridgend Well Being Plan?

- By working with young people at risk of entering the youth justice system, or young offenders we will promote better achievement at school and better prospects for employment, improved relationships within families and communities, and healthier lifestyles.
- Being within a supportive community is a protective factor for young people who have experienced ACEs, but also help adults deal with challenges throughout their lives be that ill health, becoming unemployed, losing a partner in older age, becoming a parent, or changing gender.
- Our green spaces, heritage buildings, Welsh language and social and learning opportunities can provide a focus for community activity that develops and strengthens networks as well as protecting habitats and species and increasing Welsh language speakers.
- Preventing violence against women, domestic violence and substance misuse will lessen the ACEs young children are subject to, the impact of which may be played out in communities and in the workplace in later life.

How will we measure success?

Priority	Measures for success
<p>We work together to create safe, confident communities and tackle crime, disorder and all aspects of anti-social behaviour</p>	<p>Increased Percentage of people in Bridgend feeling safe at home, walking in the local area and when travelling</p> <p>Fewer people in Bridgend are First time entrants to the criminal justice system</p> <p>A reduction in the number of offences per 1000 population in Bridgend</p>
<p>We will work together to improve community cohesion so that people in communities get on well together and differences are respected and tolerated</p>	<p>An increased percentage of people in Bridgend agreeing that they belong to the area; that people from different background get on well together; and that people treat each other with respect.</p> <p>An increased percentage of people satisfied with local areas a place to live.</p>

Links to Local and Regional Partnerships and Governance Arrangements

The objectives, priorities and steps the Bridgend Community Safety Partnership will take to support safe and cohesive communities in Bridgend County is firmly embedded in the Bridgend Wellbeing Plan.

The CSP is committed to the sustainable development principle and the 5 ways of working enshrined in the Wellbeing of Future Generations Act 2015 and will

- Think about the long term
- Look to prevent problems
- Work towards the Act's seven wellbeing goals in all that they do
- Work with each other and others
- Work with people and communities, by involving them

A Prosperous Wales	A Resilient Wales	A Healthier Wales	A More Equal Wales	A Wales of Cohesive Communities	A Wales of Vibrant Culture and Thriving Welsh Language	A Globally Responsible Wales
---------------------------	--------------------------	--------------------------	---------------------------	--	---	-------------------------------------

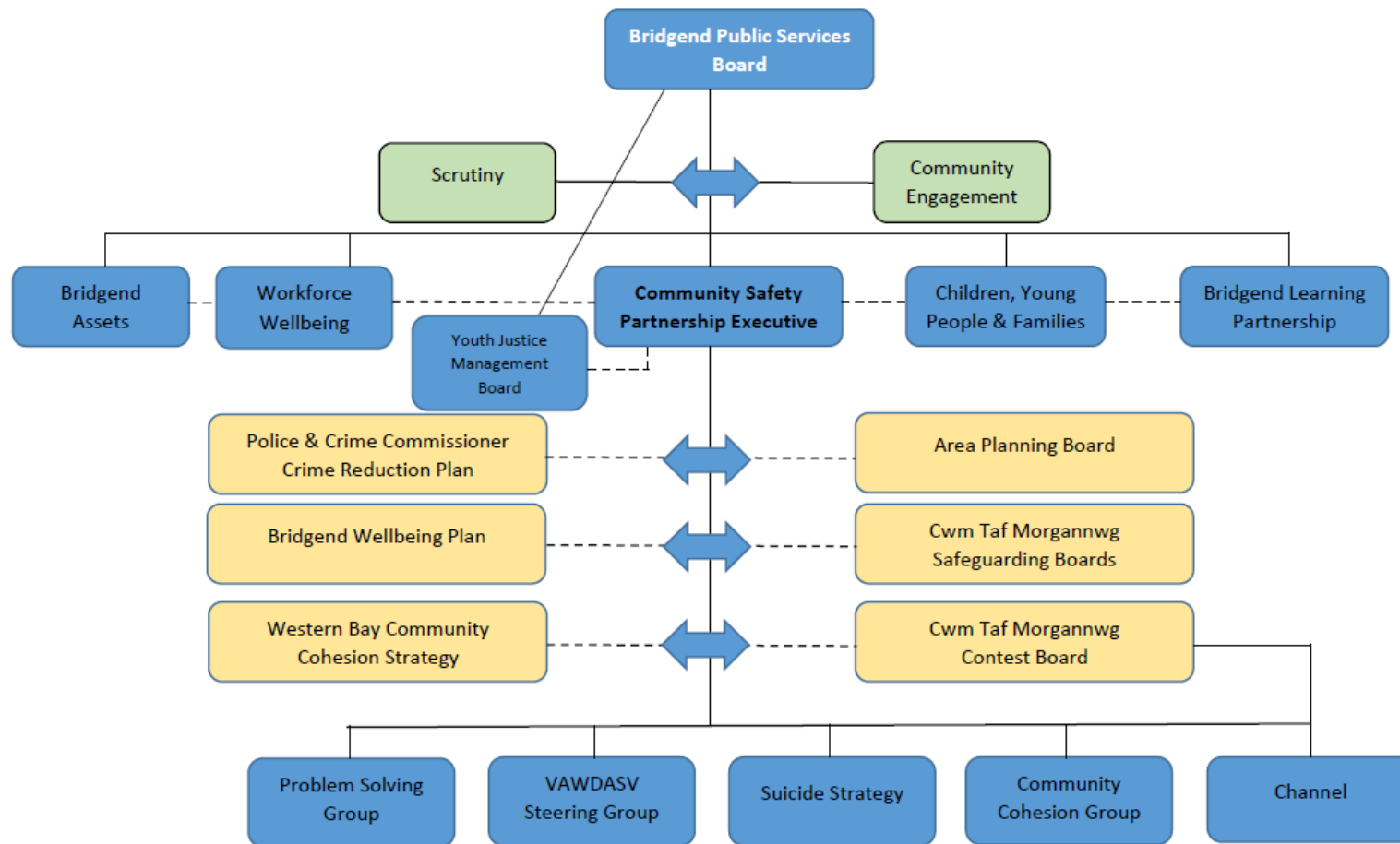
The partnership will continue to work closely with related local and regional partnerships including but not limited to:

- Community Cohesion (Regional and Local)
- Channel Panel (Local)
- Prevent: Protect and Prepare (Local)
- Contest (Regional)
- Cwm Taf Morgannwg Safeguarding Boards (Regional)
- Public Protection Executive Board (Local)
- Children, Young People and Families Board (Local)
- Bridgend Assets Group (Local)
- VAWDASV Operational Group (Local and Regional)

Reporting Arrangements

The CSP will report to Bridgend PSB on progress towards the Wellbeing Objective – supporting communities in Bridgend to be safe and cohesive at least twice a year.

The CSP will report to the PSB Scrutiny Panel at least once a year.



Bridgend Community Safety Partnership Governance

Bridgend Community Safety Partnership Delivery Plan 2019 to 2020

Wellbeing Objective	Support Communities in Bridgend to be safe and cohesive
----------------------------	--

Priority 1		<i>We will work together to create safe, confident communities and tackle crime, disorder and all aspects of anti-social behaviour</i>			
Step	Focus	Actions	Lead Partner	By When	Links to other Strategies and Plans
We will use our understanding of how for some people childhood experiences affects offending behaviour to extend the way we work together to prevent reoffending	Divert young and vulnerable people from anti-social behaviour and offending	Work with 3 rd sector partners to develop detached and 'pop up' provision for children and young people in identified ASB 'hotspots'	CSP/BCBC partnership support	June 2019	SWP Police and Crime Reduction Plan 2019 – 2023 BCBC Corporate Plan Bridgend Wellbeing Plan
		Deliver the Bridgend Youth Justice Board plan with the overall aim of reducing rates of offending and re-offending	Bridgend Youth Justice Management Board		Bridgend Youth Justice Plan Bridgend Wellbeing Plan

Step	Focus	Actions	Lead Partner	By When	Links to other Strategies and Plans
We will collect and analyse information, data and intelligence to focus on crime, in particular, violence and substance misuse and its impact on citizens and all kinds of communities.	Reduce the negative impact of drug and alcohol misuse on individuals and communities	<p>Establish a multi-agency Task and Finish group to Revisit and Revise the Substance Misuse Policy for Bridgend Schools</p> <p>Map Current substance misuse awareness raising activities for</p> <ul style="list-style-type: none"> • Students • Teachers and Support Staff 	BCBC Group Manager, Early Intervention	May to Sept 2019	<p>Cwm Taf APB delivery plan</p> <p>Bridgend Wellbeing Plan</p>
		Deliver Awareness Raising sessions on County Lines to local residents, traders and other stakeholders	SWP/BCBC SCWDP	On going	Cwm Taf Annual Safeguarding Plan
We will work with neighbouring local authorities to implement the Violence against Women, Domestic Abuse & Sexual Violence Strategy	Tackle Violence against women, domestic abuse and sexual violence	Implement the Bridgend VAWDASV Strategy and Delivery Plan for 2019 - 2020	VAWDASV Steering Group	2019 - 2020	<p>Bridgend VAWDASV Strategy</p> <p>Bridgend Wellbeing Plan</p>

Step	Focus	Actions	Lead Partner	By When	Links to other Strategies and Plans
		Work with Cwm Taf VAWDASV Steering Group to develop a regional commissioning strategy for VAWDASV services	VAWDASV Steering Group	April 2019	Cwm Taf VAWDASV Strategy
		Regional Commissioning Strategy approve by Cwm Taf and Bridgend PSB	BCBC Partnership team	June 2019	Cwm Taf VAWDASV Strategy
		Use the Bridgend VAWDASV Strategy to Identify regional re-commission priorities for VAWDASV Services	VAWDASV Steering Group	Sept 2019	Cwm Taf VAWDASV Strategy

Priority 2	<i>We will work together to improve community cohesion so that people in communities get on well together and differences are respected and tolerated</i>
-------------------	--

Step	Focus	Actions	Lead Partner	By When	Links to other Strategies and Plans
We will work with all members of our communities, in particular equality groups such as disabled people and the LGBT community, to better understand what causes tensions.	Promote Community Cohesion	Undertake a survey of local residents to better understand the causes of communities tensions	CSP	Aug 2019	Bridgend Wellbeing Plan
		Work with the regional community cohesion co-ordinator to: Establish a regular dialogue and contact with groups who may	CSP	Mar 2020	SWP Police and Crime Reduction Plan 2019 – 2023 Bridgend Wellbeing Plan

Step	Focus	Actions	Lead Partner	By When	Links to other Strategies and Plans
		<p>likely to experience community tensions locally</p> <p>Develop a mechanism to gather, report and record all kind of intelligence on community tensions as they emerge locally</p> <p>Create safe spaces and opportunities to bring people from different backgrounds together</p> <p>Provide Consistent positive messages supporting cohesive communities to manage and understand demographic change and related tensions</p> <p>Work with partner engagement and communication teams to develop a local 'Communication Resource' who will assist us in the delivery of key messages</p>			
We will use this learning to ensure there are communication and	Protect vulnerable groups from harm and victimisation	Develop and deliver an awareness raising programme to raise awareness of Child	BCBC SCWDP	On going	SWP Police and Crime Reduction Plan 2019 – 2023

Step	Focus	Actions	Lead Partner	By When	Links to other Strategies and Plans
other mechanisms in place so that communities feel informed and we can identify and address issues and prevent escalation.		Sexual Exploitation across agencies and staff			Bridgend Wellbeing plan
		Establish a Task and finish group to develop materials to support schools in Bridgend to: Implement their duties to contribute to the prevention of people from being drawn into terrorism Embed key areas relating to radicalisation and resilience and promote democratic values in the school's curriculum	BCBC Early Intervention	March 2019	SWP Police and Crime Reduction Plan 2019 - 2023
		Continue to implement the Bridgend Suicide Prevention Strategy	SWP	Ongoing	Bridgend Suicide Prevention Strategy
		Evaluate the day time and 'winter' provision for rough sleepers in Bridgend County Borough	BCBC	Sep 2019	Bridgend Homelessness Strategy

Step	Focus	Actions	Lead Partner	By When	Links to other Strategies and Plans
We will work with communities to help them improve the local environment and increase opportunities to come together to promote a sense of ownership and security	Reduce Environmental Crime	Engage and educate young people aged 11 -25 who are known to offend, or on the cusp of offending or living in deprived areas on the dangers and consequences of arson, car crime and anti-social behaviour	SWFRS	Sep 2019 to March 2020	Police and Crime Reduction Plan 2019 – 2023 South Wales Fires and Rescue Service Strategic Plan 2019 to 2024 Bridgend Wellbeing Plan
		Work with Cwm Taf area planning board and BCBC street Scent to identify the extent of drug related litter in Bridgend and develop a plan to reduce its impact	Cwm Taf Area Planning Board	Dec 2019	Bridgend Wellbeing plan
		Work with 3 rd sector partners to develop a graffiti project for children and young people to encourage positive graffiti art	CSP	Sep 2019 to March 2020	Bridgend Wellbeing Plan