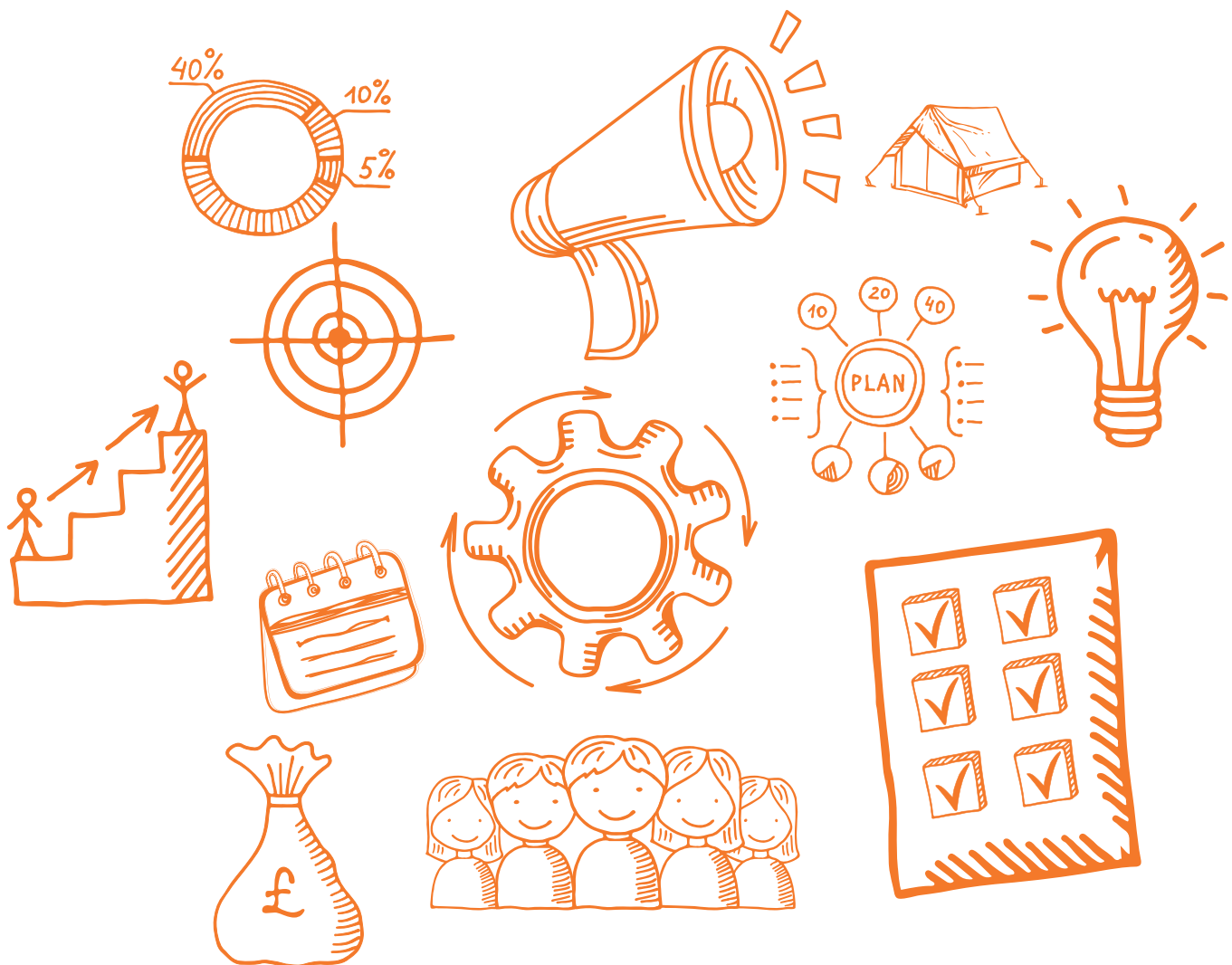




Bridgend County Borough Council
The Event Planner's Guide
2021

Contents

Why have Events?	3
What is an Event?	4
Planning your Event	5
Step 1: Develop the idea	5
Step 2: Form a team	6
Step 3: Identify your target audience	8
Step 4: Create an event plan	9
Step 5: Set your budget	17
Step 6: Get feedback and evaluate	18
Step 7: Become sustainable	20



Why have Events?

Developing events, especially those which have the potential to become regionally and nationally significant, can help to raise awareness of a place or an issue and bring about a positive impact on the local economy. For example, events can:

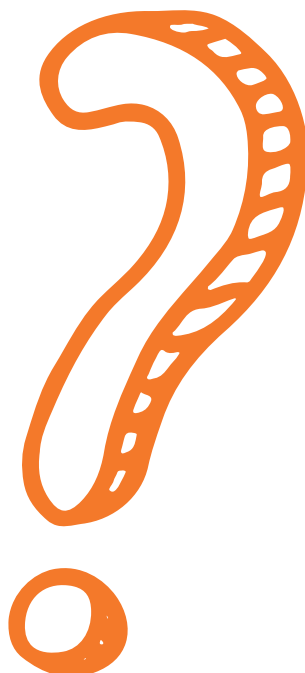
- Create jobs and income for the local area;
- Raise the profile of the area at regional, national and international level;
- Bring local people together, whether as participants or spectators;
- Promote healthy living through sports and physical activity;
- Create access to local culture, for example heritage, nature, art or sports; or
- Provide opportunities for local and national charities to raise funds.

This toolkit is a practical resource for anyone who is planning to organise an event. It provides information, standards and guidelines and helps to break it all down in order to plan, design and run your event successfully.

This toolkit includes:

- Things to think about at each step of developing your event;
- Guidance on processes and procedures;
- Guidelines in relation to current legislation; and
- Templates to help with your planning.

Bridgend County Borough Council can help at various stages in planning and managing your event. Specific departments are responsible for key activities relating to licensing, health and safety, trading standards, marketing and promotion but your first point of contact will be with the Destination Management Team on events@bridgend.gov.uk.



Planning Your Event

Step 1: Develop the Idea

Before you get started, it's a good idea to think about why you are planning to hold an event. This will influence many of your decisions further down the line so it's important to have a clear idea of your goals.

You could think about coming up with a vision, which would be your long term aim for the event. It's also a good idea to define some clear objectives. These are each of the things that you'd like this event to achieve.

Doing this at the beginning will help you to explain your event to others, for example potential funders, and will help to focus everyone involved.

Once you know why you want to hold your event and what you'd like it to achieve, you can start to think about how realistic your goals are.

Some things to think about in the early days of planning your event might include:

- What support are you going to need from your team?
- What are your combined skills and strengths?
- Is there a gap in the market that the event can fill?
- Is there a demand for an event of this kind?
- Is there a chance the event would be duplicating an existing one?
- Are there resources available to deliver it?
- Will the event be financially viable?
- Is there likely to be support from the local community and other organisations?

One way of doing this is to create a SWOT Analysis. This is where you identify the strengths, weaknesses, opportunities and threats of your idea and the people and other resources you have available to you.

Even if your event has been running for some years, it can be useful to revisit your vision and objectives and look again at these questions to make sure you are achieving what you set out to do.



TOP TIP

If you're not sure how to define your objectives, think about using the SMART principle to create objectives that are:

- Specific
- Measurable
- Achievable
- Relevant
- Time-based

Step 2: Form a Team

You may find that it will help to get your idea off the ground if you have an events team or a committee. It's a good idea to establish team roles and responsibilities. For large or complex events you may need both: the committee to steer the event planning on a more strategic level, and a more practical delivery team to make things happen.

You will need the right mix of skills and expertise and the right number of people. Having clear expectations and agreements set up in advance, and clear communication will help reduce problems later on.

Some typical roles and responsibilities within an events team include:

Project management: someone to act as the main point of contact and to have overall responsibility for the planning and running of the event.

Treasury: someone will need to take responsibility for managing the budget throughout the planning process, including the bank account, cash flow, invoices and payments to suppliers; and on the day, including cash handling and security.

Marketing: the event will need to be promoted in order to attract your target audience, and it's useful to have someone on board with some experience of this.

Safety: it is essential that safety is considered throughout your planning so that risk assessments can be taken and all safety and security measures put in place to ensure the safety of everyone at the event, including the public. The Bridgend ESAG page on the BCBC website gives further information www.bridgend.gov.uk/business/business-zone/organising-an-event/.

You may need people with specialist skills or knowledge; and you'll need enough people on board to cover the anticipated workload – both in planning the event and on the day.

You have legal responsibilities to the Health & Safety of both paid members of staff and volunteers. Further information about employing people is provided on a useful government website – www.gov.uk/browse/employing-people.



Volunteers

It's likely that you will need to involve or delegate some activities to volunteers. In selecting volunteers, think about what they are looking to get from being involved – they are giving up their time, so make sure this is recognised in some way. In the same way as paid members of staff, it's important to set out expectations at the start, including involvement in planning meetings; and agree working times and requirements.

Training

Identify any training needs to make sure everyone in the team is competent and confident in performing their role.

Training could be formal or informal; group or individual. You can use your Event Plan, that you will develop later on, as a tool to help deliver training: making sure everyone involved in running the event has an understanding of the overall event; the safety plans and emergency procedures, sustainability plan, customer service and site or venue management. It's a good idea to keep training records, especially in health and safety training.

Becoming Constituted

For particularly large events, you may need to set up an organisation or register a company, for example if you need to have a formal constitution in order to apply to certain funding organisations, or to contract with certain organisations.

The Bridgend Association for Voluntary Organisations (BAVO) supports and promotes voluntary organisations in Bridgend County Borough and has a wealth of knowledge and experience in advising community groups to formalise their activities, visit www.bavo.org.uk.

The UK Government website is also a good place to start:

<https://www.gov.uk/browse/business/setting-up>.

Step 3: Identify your Target Audience

Thinking ahead carefully about who you would like to attract to your event can have a big effect on the end result. Your event theme or programme, plus other factors such as the location and entry fee need to match up with the expectations of your audience.

Some of the things you might want to think about are:

- The age range you would like to attract, or life-stage;
- How far people might travel to your event (your catchment area);
- People's interests and popular trends; or
- Sector or type e.g. families, businesses, locals or tourists;

Once you have an idea of the basic audience type you'd like to attract you can begin to develop a picture of your target audience, for example, how much they are likely to spend, how they will be likely to travel, what they will need once they are there, where they will be likely to see your advertising and much more.

Doing some simple research with your target group will help you to identify these things, if there is a demand for your event and what you need to do to make it a success.

An accurate estimate of attendance numbers is important as it affects the venue size, risk assessments and all aspects of the event's management on the day.

It can be hard to estimate accurately, but things to take into account could be:

- Attendance numbers at similar events;
- What else is going on at the same time;
- The total population of your target audience (e.g. number of families in an area) and what percentage of those families you might expect to attend;
- The total target audience you are marketing your event to and what percentage are likely to come along;
- Known demand and interest.

Your venue might restrict your numbers, so you may want to think about ticketing or advance registration. This can be done online, and there is a range of online tools you can use, usually for a charge. Charging for entry is also useful if you need an additional source of income or are looking to make a profit from the event.

Once you have a better idea of the number of people coming, you will be able to plan the facilities and support you will need on the day, such as loos, catering, stewards, and first aiders. Think about any special needs people or groups may have, such as families with children, people with disabilities or elderly people.



TOP TIP

The first step in marketing your event is to know who you want to attract and make sure you offer what they want at the right price.

Step 4: Create an Event Plan

You should now be ready to start creating an event plan. This is the longest section of this guide and you can use the template within the toolkit to help you.

The event plan will be an extremely useful tool for you to update as you go along including everything you have agreed as a team and any changes or issues that come up as your event progresses.

In your event plan, you can create a timeline with dates and deadlines and who is responsible for everything. Have regular meetings to progress and update the plan and keep everyone up to date, clear about expectations, timing, challenges and opportunities.

Your event plan can be used to help you secure any approvals, licenses and permissions you might need to host your event too.

Here are some things for you to think about when completing your event plan:

Venue

The nature of your event will help inform the type of venue you select. We are fortunate in Bridgend County Borough to be able to offer a range of venues. Some of the issues to consider when looking at venues include:

- Location
- Budget
- Audience (venue capacity)
- Transport & parking
- Timing
- Permissions
- Restrictions
- Lay-out
- Availability

Once you've booked your venue, you can develop a site plan to show the layout. Prepare a sketch plan of the site, preferably to scale, showing the position of all the activities and attractions, circulation routes, access and exits. This drawing should be updated if your plans change and copies of the final version should be available at the event.

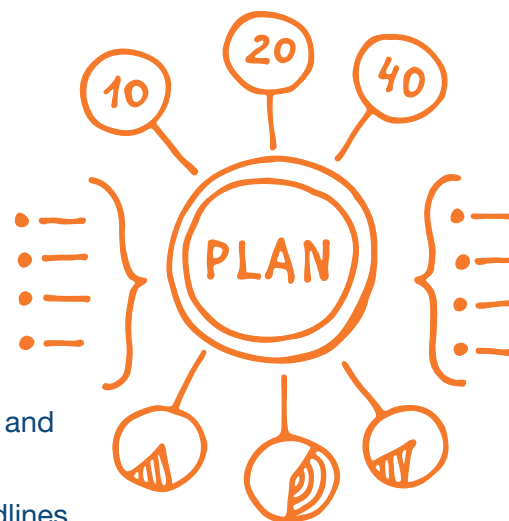
Stakeholders

Other people may be affected by your event, for example, transport providers, local shops or local interest or amenity groups. Other stakeholders would include everyone who needs to be involved in the organisation of the event or informed about it, and this is normally dependent upon the size and nature of the event.

People such as neighbours and local businesses may be adversely affected by the event, for example by noise, parking, litter and extra traffic. It's a good idea to let people know what will be happening, and listen to what they have to say.

There may be easy ways to avoid problems, and if you have a good Event Plan you can reassure people you are taking their views on board and will address their issues.

Think about ways in which your event can benefit local people and businesses too and consider approaching them to see if they would like to be involved.



TOP TIP

If you're hiring a venue, you may need to extend the hire time to allow for setting up on the day or night before, and clearing up afterwards.

Timing

The choice of date for your event can have a major impact on its success. Careful consideration should be given to the range of risk factors involved in selecting the best date, for example:

Nature of the event: is it an outdoor event; does it need to be staged in a particular season; does it have to be in a particular venue, town location, etc?

Weather: what are the probable weather conditions at your preferred time of year; will inclement weather affect the event; are there contingency opportunities available?

Target audience: who are you hoping to attract to the event: is this more achievable if it is staged at a particular time of year or week?

Diary clashes: what else is happening at the chosen location/venue; is the event diary overly busy? It's worth talking to the Tourism Team to check what else is planned in the area at the time. You should also check to see if your event clashes with any similar events further afield that may also attract your target audience or participants. A good place to start is the events diaries managed by Visit Wales and BridgendBites.com.

Complementary activity: are there any complementary events or activities taking place at the same time that could assist your event? Could you work together for mutual benefits?

Resources: are other major events taking place at the same time that will impact on the resources required to stage your event?

Other Factors: don't forget to check out any other influencing or relevant issues, for example, road or building works planned in the vicinity at the same time as your event.

Start organising the event well in advance so that you can carry out your risk assessments and obtain specialist advice if necessary. The statutory agencies (Police, Fire, Ambulance, Local Authority and Voluntary agencies) will also need to have time to fit your event into their programmes, especially during the summer months when many events take place.

You may also be in competition with other events for facility hire such as marquees and 'portaloos', so the sooner you book your requirements the sooner you can start planning the details.

Nothing can be guaranteed, and you should always have a contingency plan to cover uncertainties such as weather or transport disruptions.



Legal Issues

Organising an event involves taking care of a variety of legal and licensing issues. Bridgend County Borough Council is responsible for dealing with licensing for different activities:

- Performing live music
- Recorded Music
- Dancing
- Performance of a play
- Exhibition or a film
- Indoor sporting events
- Retail sale and supply of alcohol
- Boxing or wrestling events
- Supplying hot food or drink after 11pm until 5am

Applicants for licences under the Licensing Act 2005 should contact Bridgend County Borough Council's Licensing department at an early stage for advice and to answer any queries that come up, as the Act is undergoing a number of changes.

Here are some of the basics in relation to licensing, which are correct at the time of the latest revision of this guide, but make sure you check with the relevant department:

- If you wish to sell alcohol or provide regulated entertainment at your event and the event is likely to attract less than 500 people you will simply need to complete a Temporary Events Notice at a small fee.
- If your event will attract 500 people or more then you will require a full Premises Licence. The cost of a licence depends on the rateable value of the site. There is a sliding scale of fees for large scale events.

Under the Licensing Act 2003, Regulated Entertainment is defined as any entertainment that is provided to members of the public, or a section of the public, or with a view of making a profit. This definition is likely to change and you are advised to contact the Licensing Section to discuss what type of activities you wish to stage.

The descriptions of entertainment are as follows:

- Performance of a Play - A performance by way of speech, singing or action. This includes Mime, puppet theatre, theatrical reading, etc;
- An Exhibition of a Film - The exhibition of any moving picture, not including promotional or educational films or live broadcasts;
- An Indoor Sporting Event - Any sporting event which takes place inside a building and the spectators are accommodated inside that building;
- Boxing or Wrestling Entertainment - Any contest, exhibition or display of boxing and wrestling;
- Performance of Live Music and/or the Playing of Recorded Music - Includes vocal or instrumental music or any combination of the two; or
- Performance of Dance - Any performance of dance by way of routine or entertainment. This includes majorettes, belly dancers or stage dancers, it does not include people dancing along to music.

TOP TIP

For larger scale events it is advisable to get in touch as early as possible to discuss your licensing requirements plus enquiries in relation to street trading and charity collections.

Please note that the licensing process can take up to two months to complete and will involve consultation with agencies and the public.

Safety Plans

Organisers have a legal responsibility for the health & safety of staff, helpers and the public whatever the size of the event. All events must comply with recognised safety standards. Legally you must carry out a risk assessment to identify possible hazards, check the risks and decide how you will minimise those risks. You then need a written record of how you will put your planned action into practice and this becomes a part of your safety plan.

a) Risk Assessment

To meet the legal requirements you must carry out a risk assessment to:

- Identify all possible hazards (anything that could cause harm to anyone or anything);
- Identify who or what might be harmed, and how;
- Check the risks (the likelihood and impact of something happening as a result of the identified hazard); and
- Decide on the action you will take to minimise the risks.

Be sure to inform others working on the site or at the venue about your risk assessment and management plans to make sure everyone understands any risks and how to prevent incidents occurring. You could have it as a regular item on the agenda of your team meetings, so that it can be checked and updated on a regular basis to accommodate changes.

It's a good idea to re-visit your Risk Assessment on the day before your event begins to make sure it's still valid.

The Health and Safety Executive has put together some helpful information on the legal and safety implications of running an event. Visit www.hse.gov.uk/event-safety/running.htm for further details.

b) Contingency Plan

Think about what might go wrong on the day and plan ahead to deal with each potential situation. It does not need to be complicated: the shorter and simpler, the better. Set out in a clear statement:

- The action to be carried out if these emergencies happen
- Who is to take that action
- How you will let the right people know what is happening.
- At what stage during an incident control will be passed to the emergency services.

Some things to think about might include:

- Who's responsible
- Public / Community Safety
- Barriers, staging & structures
- Areas off-limits to the public
- Fire fighting
- Staff safety
- Food safety
- Drinking water provision
- First Aid/Illness
- PAT tested electrical equipment
- Risk assessment and risk management
- Records, and keeping the risk assessment up-to-date as the event develops
- Security
- Accidents
- Overcrowding
- Contingency planning: what if there's an emergency, or something unexpected happens
- After the event

c) First Aid

Whatever the size of your event, it is essential you provide first aid facilities. Contract a professional medical provider such as St John Cymru Wales or an independent provider. All first-aiders should be easily contactable during the event by radios or mobile phones. Make sure the first aid tent at your event is well sign-posted. For summer events, some of the most common first aid issues will be from the hot, sunny weather – sun stroke, dehydration, sun burn, fainting, etc.

The Bridgend Events Safety Advisory Group (ESAG) <https://www.bridgend.gov.uk/business/business-zone/organising-an-event/> will support and advise event organisers on safety issues for any public events happening within the Bridgend County Borough area and you may be asked to come in and speak with them.

Insurance

Organising the appropriate insurance for your event is essential. Aim to confirm your insurance around 2-3 months before the event and no later than a month before. Check what is expected in terms of insurance by all funding partners and seek legal advice if you are unsure.

When you have accepted a quote and received your policies, read them carefully, making sure nothing has been omitted that you thought you were covered for. If anything changes, you must tell your insurer immediately.

Your policy is likely to include a range of cover, for example:

Public Liability: to cover you as event organiser against anyone injuring themselves or others at your event. It is recommended that you cover your event for a minimum of £2 million. In many instances a greater level of cover may be needed. If you don't have this cover any claim could be made against all the organisers and their private finances. If you use contractors, check that they also have their own public liability insurance.

Employers Liability: the level of cover and premium will depend on the number of staff, payroll and duties.

Event Equipment and Property Cover: when you hire equipment for an event, it is likely that insurance is not included in the hire charge (always check with suppliers).

Cancellation & Abandonment Insurance: this covers you for cancellation or abandonment of the event due to situations beyond your control.



Equipment

The types of amenities your event will need depend on what sort of audience your event will attract. For example, an audience that includes older people may require extra chairs, one that includes young children will need a lost and found area, and all events need access for people with disabilities and wheelchair-friendly viewing points.

Before you contact suppliers for any equipment or services for your event, you should be familiar with the key details about the event, such as, date, time, venue and if possible, the programme. The supplier or service provider will then have a greater understanding of your event and will be able to provide realistic hire costs and some advice. They often have invaluable experience through years of supplying events.

If you are negotiating the cost of the service or equipment, know the price range in which you are prepared to negotiate. This will require you to make a few enquiries beforehand. If quoted a high fee that the supplier won't reduce, make sure you get the service promised, and therefore, value for money – for example, marquees set up and taken down for you as part of the cost.

Once you have reached an agreement, write a letter of confirmation setting out the conditions and outline all the tasks you are expecting – date, place and time of delivery and set up – and the method of payment. When you have a running sheet of the event, send it through to your supplier. Do not leave negotiations and agreements at a verbal level.

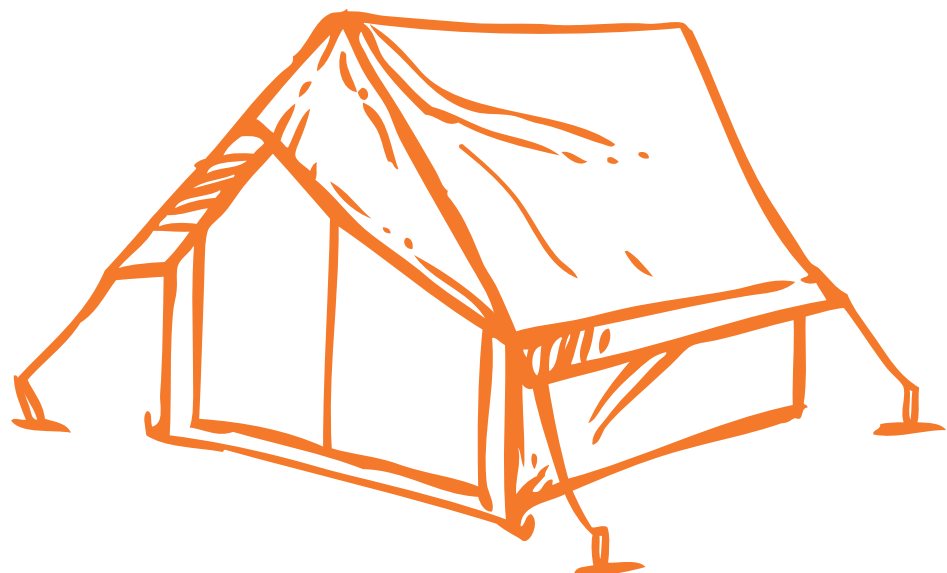
Don't forget...

Professional contractors: Once you've identified what needs to be done you may need to take on contractors, such as electricians, waste contractors or marketing support. It helps to support the local economy if local businesses are recruited, and you will need to have a formal contract in place.

Tents and Marquees: Shelter from the weather is very important for outdoor events. Check if there are any consent requirements for erecting tents and marquees.

Toilets: Make sure you have enough toilet facilities at your venue or site, either within the building or outside. You may need to set up portable toilets to add to any existing facilities and they must be serviced during the event. Consider also supplying a toilet with disabled access.

Waste Management: You need to manage the waste at your event. By reducing, reusing and recycling, event organisers can not only minimise the waste generated at events, but also enhance the image of their events.



Technical Equipment and Services: sound, lighting, stage and audio visual technical equipment can be hired from commercial hire companies. Professional and amateur performers will have specific sound, lighting and stage requirements. Find out what these are as they will have an impact on your budget and the way your event runs. To make sure performers' needs are known and catered for:

- Create a technical requirements form for all acts to complete before the event, which you can then give to the technical contractor and stage manager. This is called a “Technical Rider”.
- For bigger events hold a meeting with all your performers or a representative, stage manager and sound engineers. The technical contractor can then discuss with performers their particular needs before the event and identify any potential challenges.
- Develop a stage layout plan, showing where the sound equipment is located on stage.
- Have an accurate and detailed ‘run-of-show’ and provide a hard copy to all technical support staff.
- Appoint an experienced stage manager and stage hands.

The right public address systems, microphones, speakers, stage lighting, staging, screens, projectors and other technical equipment can make or break an event. Some have failed because the audience have not been able to clearly see or hear the main attraction.

This is an area where it generally pays to invest in a professional – for hiring the right equipment as well as providing expertise in setting it up and operating. **Tents and Marquees:** Shelter from the weather is very important for outdoor events. Check if there are any consent requirements for erecting tents and marquees.

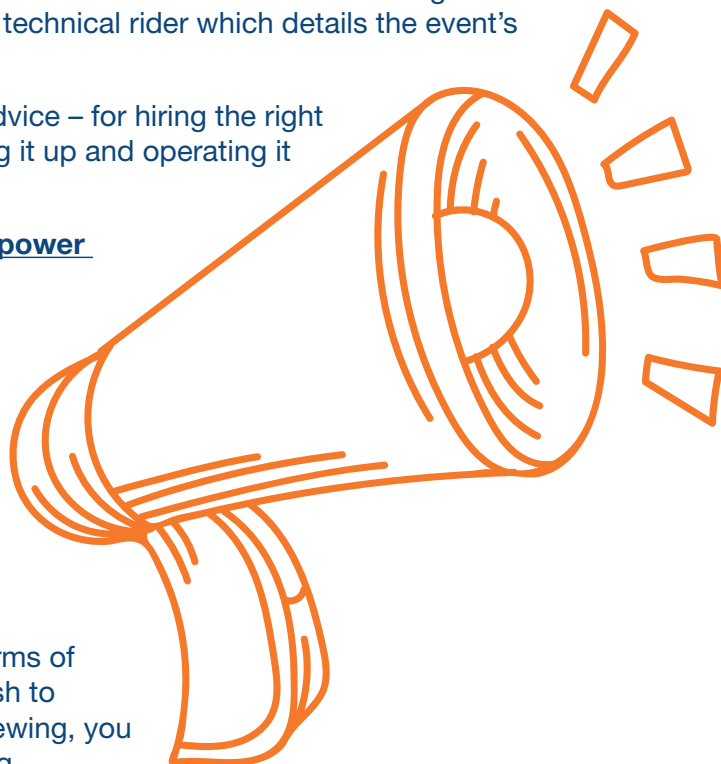
Public Address (PA) System and Power Supply: Discuss the needs of your event with your PA supplier. The easiest and safest way to take care of the PA is to hire a sound engineer to assemble and run the PA on the day. Provide a technical rider which details the event's requirements.

It is recommended that you obtain professional advice – for hiring the right equipment as well as providing expertise in setting it up and operating it safely.

You must use a registered electrician to make power connections at your event.

Communication: If your event involves a number of activities and is spread out over a large area, you need to have some form of communication system so that event team members and helpers can get in touch with each other quickly and efficiently. Radio transmitter systems are available for hire or to buy.

Tables and Seating: Tables, chairs and other forms of seating, staging and risers can be hired. If you wish to provide tiered or terraced seating for spectator viewing, you can find it by searching for providers of scaffolding.



Parking

Generally, parking restrictions will not be lifted to provide free parking for the public to attend your event – you need to make provisions for them. Think about:

- Approaching local schools, churches and halls;
- Using local parking buildings;
- Promoting park and ride options;
- Putting on a charter bus service;
- Parking for event employees, participants and volunteers; and
- Access to disabled parking.

If you are having difficulty securing parking for your event, contact Bridgend County Borough Council with the details of dates, numbers of vehicles involved and areas involved. They may be able to help you.

TOP TIP

Once you have agreed the date, make sure that you inform everyone who will be able to help you deliver the event, including all key stakeholders.

Security and Crowd Control

Never underestimate the need for security, especially at large events where there are large numbers of people and if you are handling a lot of money. You may also need security while setting up equipment, staging or marquees, especially when these are left overnight before or after the event.

Security can also be necessary to provide the safe control of big crowds at an event. Different levels of crowd control will be required depending on the location, time and nature of your event. For example, if your event is in a public space you need a high level of security and crowd control to ensure public safety.

Hire a professional security company with a good reputation and record. Security companies can provide services for cash handling, bag checks, crowd control etc. Make sure you give clear instructions to your chosen company and that they understand your specific requirements. Be sure to tell the Police you are planning an event.

Signage

Signage plays a crucial role in informing people about everything that is happening at your event, and where it is happening. Signage should be used at your event to indicate:

- Map of event including your information point.
- Toilets, first aid, lost and found (children and personal belongings).
- Rubbish and recycling bin locations.
- Entrances and exits, car parking, fire and emergency exits.
- Food stalls.

High quality signage that can be re-used for future events can be a good investment. You may require consent for signage used either at your event or to advertise your event.

Food and Beverages

You may want to consider providing catering for spectators or participants in your event. You will need to allow space at your event for the caterers/food stalls to set up and operate. Ask any potential caterer about their food safety practices as you don't want your event ruined by poor food handling practices.

Step 5: Set your Budget

Your budget

You may have a great idea for an event, but you need to make sure it is financially viable. You will need a budget to support your event setting out costs and income, including any ticket sales, funding or sponsorship you hope to achieve. A template for setting out your budget is available with this toolkit.

Start with an outline budget using indicative costs and your proposed sources of finance, and firm up the detail once you start to get income information and quotes from suppliers. To help you manage your event's finances, it's a good idea to keep a 'live budget' on your computer, such as a spreadsheet, that you update on a regular basis to make sure there are no surprises.

Costs may include fees and licenses, and you may be asked to put up a returnable deposit if your event is on private or public land or premises to cover any damage.

As with any plan, financial responsibility must be clearly allocated, including who is liable in case things don't go so well. Set out responsibilities clearly in contracts with suppliers, funders and sponsors. For larger events, financial procedures must meet relevant accounting and audit requirements and be designed to ensure the event is financially viable.

Sources of income

There is a range of options for you to consider in raising the funds you need. You may use funds within your organisation, you may charge attendance or for bigger events, you might need to consider grant funding or sponsorship.

Sponsorship: Businesses provide a further opportunity for supporting your event. In return for sponsoring your event, a business partner will need to receive a commercial return for their investment, and they will expect value for money. When thinking about sponsorship you need to think about how your event can help them fulfil their objectives.

Obtaining sponsorship from a business involves a strategic plan together with a professional approach. To sell yourself to a business you must consider how much time, effort and resources you are prepared to allocate. In considering timescale, remember many businesses plan their budgets a year or more in advance, so you're planning needs to begin well ahead of that.

If you are successful in securing funding, make sure that you keep your funder up to date with how the project is going. Even if things aren't going as planned, they may be able to help or offer advice. Ensure that you invite them to any events, launches or openings.

Sales income: Set up clear and transparent procedures for managing income from the event, including security and cash handling on the day; as well as procedures for dealing with invoices, payments and relationships with suppliers, sponsors and funders. Be clear about inclusion or exclusion of VAT.



TOP TIP

It's a good idea to keep a contingency fund of about 5% in case of unforeseen costs.

Step 6: Get feedback and evaluate

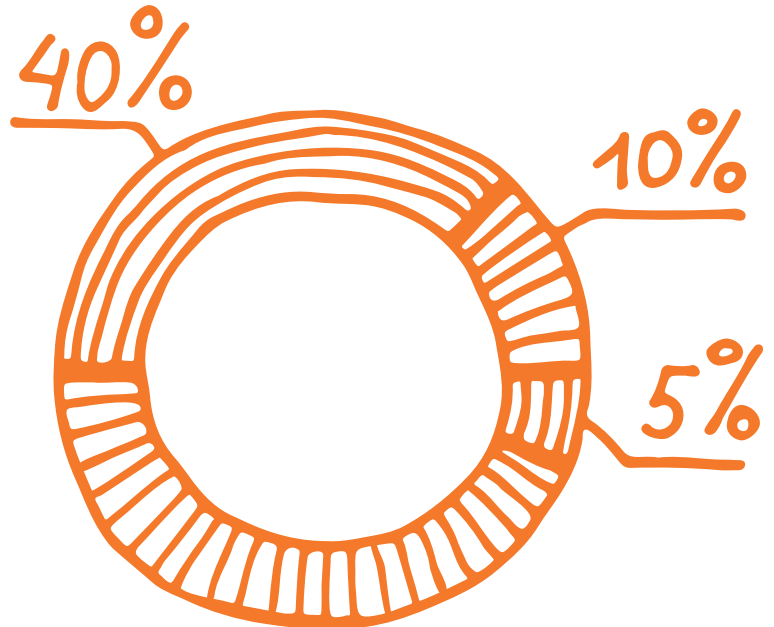
At your event, collecting information about your event and those who attended will help you with a number of things, for example:

- Establishing how successful your event has been;
- Informing marketing and public relations activity;
- Reporting back to budget holders and your funders; and
- Planning for future events.

Visitor numbers will give you an idea of the popularity of your event but direct feedback from people who attended or helped to deliver your event is the most valuable way of assessing how well it went. It's also important to learn from things that didn't go so well to inform future event planning and design.

With well-designed research you can help build the reputation of the event. It's a good idea to track media coverage, such as print and broadcast media articles, online comments and social media sites to get a feel for the event's success.

Some funders may specify key performance indicators, evidence requirements or measures that you have to meet as a condition of funding and this will need to be taken into account to ensure you are meeting the funder's requirements with the evidence that you collect.



What information do you need to collect?

Think about the information that you would find useful when planning a future event and meeting the needs of your audience. You might like to know things like:

- Where they have travelled from and how they got there;
- What they thought about the event and any suggestions they have to improve it;
- Whether they would come to the event or visit the area again;
- More detailed feedback about the facilities, catering, access, entertainment, helpfulness of stewards etc.;
- How they found out about the event;
- Socio-economic data (age, gender, employment status, ability). This helps with marketing and also accessibility equalities requirements.

Estimating audience size

You'll need to have an estimate of audience size for planning the event, to assess attendance levels for your survey sampling and to feed in to your evaluation report after the event. The accuracy of the count depends on your resources and the degree of accuracy required.

Counting on the day

To estimate attendance on the day you could use numbered ticketing at the entrance, programme sales or a clicker system at the entrance or exit.

Things to bear in mind include:

- It's easier if your venue has clearly defined entry/exit points
- How you collate the information
- People arriving or leaving at the same time can make it difficult to keep track
- Take care not to count people twice

Your sample size and design is a critical consideration. The 'population' is everyone you are interested in – i.e. everyone who attended the event, but it's impractical to get feedback from everyone, so the answer is to take a smaller sample that can be representative of the population of attendees, and will give a reliable overview of the wider population's views.

If you are using feedback forms or self-completion questionnaires, questionnaire design is critical: it needs to be clear, with box-ticking responses, although do leave space for comments. Avoid leading questions, where the wording of the question could influence the respondent's response.

Evaluation

Evaluation is about assessing whether your event achieved its intended aims. Use it in the planning process, for keeping on track, giving a picture of the event in retrospect and helping you learn for the future. It is also a way of assessing the impact that the event has had.

Staging events can provide a strong economic return on investment through the attraction of visitors to a host region. The economic impact of an event is therefore a critical measure particularly in securing public funding support.

Events can have a variety of environmental impacts in the areas of waste, carbon and sustainability. It is increasingly important for event organisers to understand the scale of these, in order to best develop systems that manage them.

The social impact of an event concerns its effect on the people and communities around which it takes place. These include the development of skills and volunteering, inspiring participation and delivering satisfaction.

The media impact of an event is related to the amount of media coverage achieved by that event.

An evaluation report template is available with this toolkit.

TOP TIP

The eventIMPACTS toolkit has been developed by a number of organisations and provides some key guidance and good practice principles for evaluating the social, economic, environmental and media-related impacts associated with staging major events and festivals. It can be downloaded at www.eventimpacts.com and is targeted primarily towards event owners, funders and event industry employees across the UK.

Step 7: Become Sustainable

Financial Sustainability

For your event to be truly financially viable, you will need to understand where your budget will come from in future years. Often, grant funding is only available for the first few years of an event and it is likely to be less money each year.

You may have had some success with private or public sector sponsor partnerships or have generated some income from ticket sales and you can use these as feasible options for taking your event forward in future.

You will also need to consider who has been involved in delivering your event up to now and whether they plan to continue supporting your event, particularly if they are volunteers. It is important that you provide the right support and training for your team to maintain their enthusiasm and continued support for your event.

You may also consider somebody else taking over the management of your event in future, particularly if it becomes too big for your team to manage.

Environmental Sustainability

Sustainable event management can help in planning an event responsibly, taking into account concerns for environmental, economic and social issues. Much has been learned about managing events more sustainably, so there is now a lot of guidance available, and a British Quality Standard (BSI-20121) to work to.

It needs to start at the inception of the project, and should involve all the key players, such as the event organisers, venues, sub-contractors and suppliers. Whatever the size of your event, you can adopt a similar approach to health and safety risk assessment, using a checklist and establishing the likelihood and scale of an impact affecting people, the environment or local businesses.

Some events may include positive sustainability impacts, such as raising awareness of environmental issues and supporting local business.

You must meet legal requirements, and a systematic approach can help ensure your event is compliant with environmental regulations, for example waste Duty of Care regulations; and that it does not cause pollution for example from a spillage of cooking oil or milk leaking into a watercourse.

You could make a top level statement, for example “To make the event as sustainable as possible”, or, you may want to back up your top level statement, for example:

“We will make our event as sustainable as we can by making sure we adopt a responsible and well-informed approach to understanding and reducing negative impacts on people and the environment, and by maximising its positive impacts. We will have a systematic approach to make sure we comply with all relevant regulations, and prevent environmental damage.”



Once you have established what the most important issues are you could include more specific aims, such as “We will...

- Reduce traffic
- Reduce impact on neighbours
- Prevent contamination of water courses (river, sea, groundwater etc).
- Leave the site in good condition
- Reduce energy use and CO2 emissions
- Calculate the event’s carbon or ecological footprint
- Reduce transportation mileage (delivery to and from site);
- Reduce the need for waste disposal
- Reduce water to landfill Food Safety and avoidance of contamination.
- Prevent nuisance to neighbours
- Build community engagement; promote benefits to local people.
- Maximise the value of the event to the local economy
- Promote healthy food: safe practices in food prep promoting healthy eating
- Promote local food growers and suppliers.

A template is available with this toolkit to help with your sustainability assessment.

There are various online tools such as **eventberry** that will help you manage sustainability at your event or venue and guides you through the process of ISO20121 compliance in easy, manageable chunks.